

Cont. 135 1/4 A.

LAND OF STEPHEN WATKINS DEC.
 Surveyed 15th and 16th of August 1871
 Albert Y. Hudgins
 Surv.

DIV. LINE TABLE

No.	C.	D.
1	N. W. 3/4	35.50
2	N. W. 3/4	46.70
3	N. W. 1/4	37.00

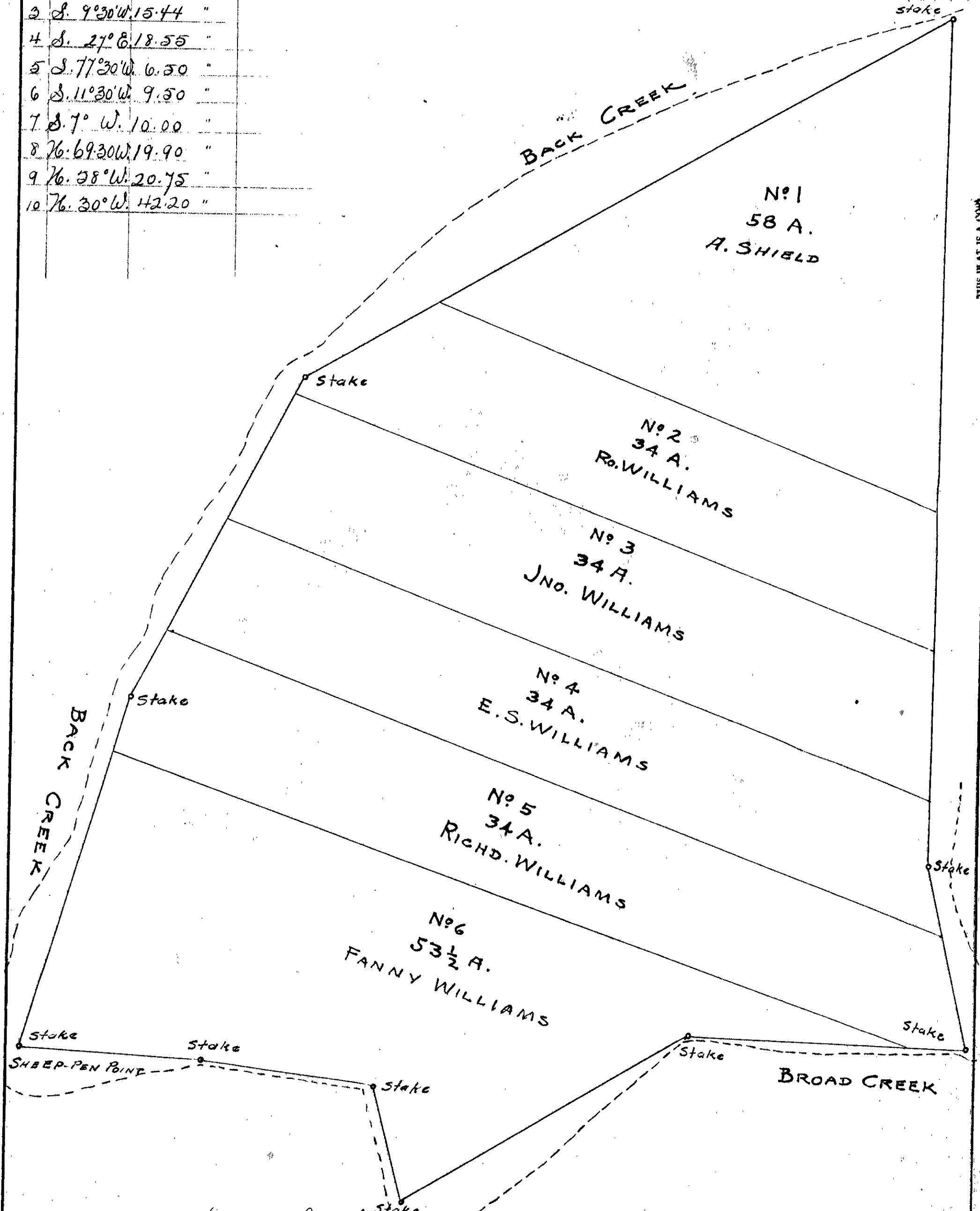
Scale 20 Poles To The Inch

TABLE

No.	C.	D.
1	N. 77° W.	6.50
2	N. 75° W.	14.62
3	N. 27° W.	2.12
4	N. 22 1/2° W.	2.84
5	N. 62° W.	4.27
6	N. 27° W.	3.90
7	N. 57 1/2° W.	2.17
8	N. 27 1/2° W.	2.54
9	N. 26 3/4° W.	2.07
10	N. 62° W.	2.15
11	N. 22 3/4° E.	2.24
12	N. 24° E.	5.44
13	N. 32 1/2° E.	1.05
14	N. 32° E.	5.21
15	N. 32 3/4° E.	2.04
16	N. 32 1/2° E.	2.19
17	N. 22 3/4° E.	7.64
18	N. 47 3/4° E.	4.34
19	N. 42 1/2° E.	8.34
20	S. 54 1/2° E.	0.50
21	S. 52 3/4° E.	3.65
22	S. 47 1/2° E.	1.62
23	S. 42 1/2° E.	5.20
24	S. 45° E.	2.25
25	S. 27 1/2° E.	1.60
26	S. 34 1/4° E.	2.40
27	S. 20 1/2° E.	5.11
28	S. 12° E.	16.62
29	S. 12 3/4° E.	7.24

Scale 5 Chains To One Inch

1	S. 85° E.	47 chains
2	N. 81° E.	10.50 "
3	S. 93° W.	15.44 "
4	S. 27° E.	18.55 "
5	S. 77° 30' W.	6.50 "
6	S. 11° 30' W.	9.50 "
7	S. 7° W.	10.00 "
8	N. 69° 30' W.	19.90 "
9	N. 28° W.	20.75 "
10	N. 30° W.	42.20 "



Done by triangulation upon a basis of five chains to the inch, giving an approximate area of woods 138.00 acres; whole area of woods and marsh 247.50 acres, Back Creek, Decedent subject to a decree of the Circuit Court of York County, June 10th 1879, under direction of J. M. [unclear] appointed by said Court.

F. Y. Power.
 Surveyor

THIS MAP IS A COPY
 Original has been transmitted to
 Bureau Map & Book No. 1