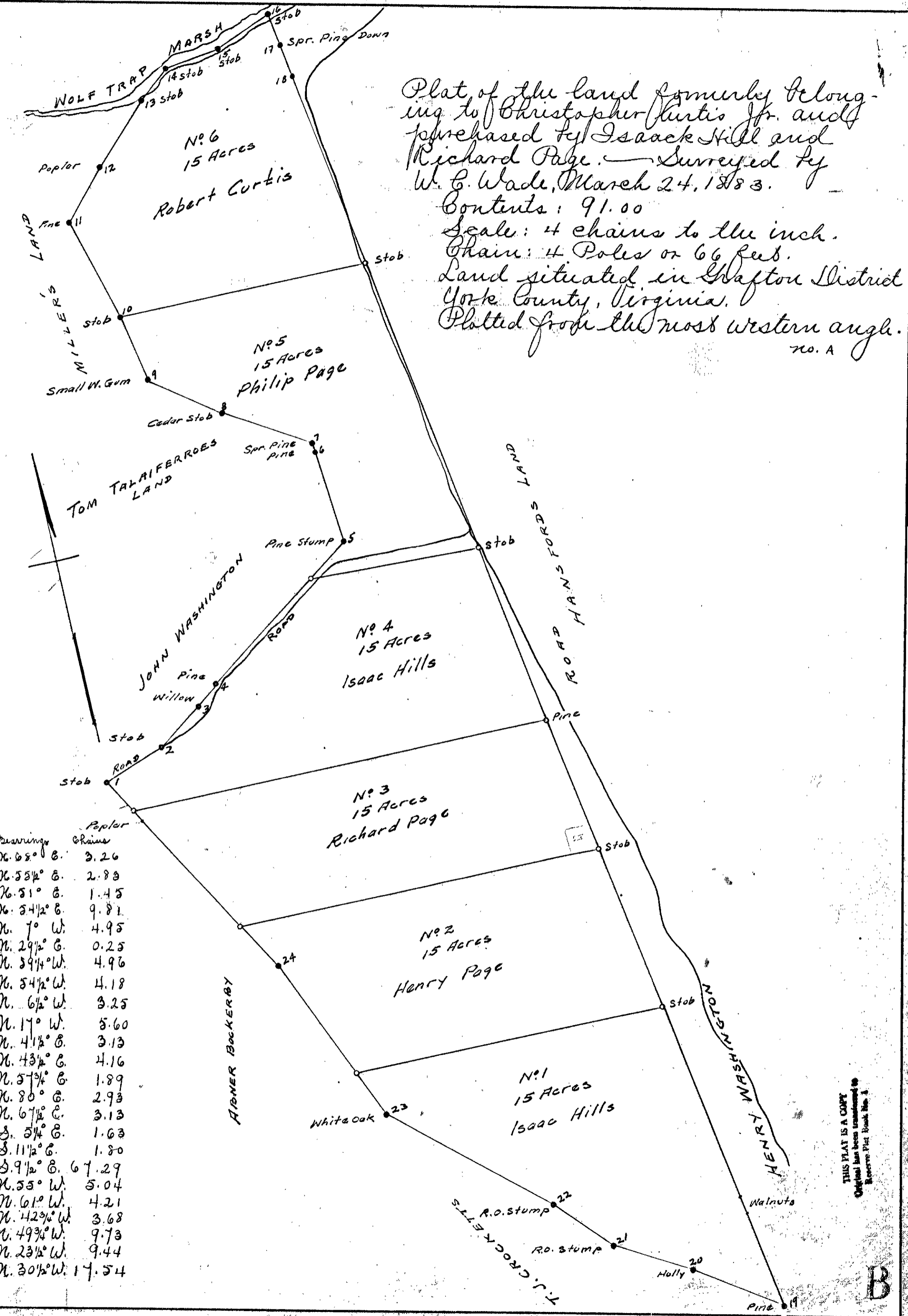


L.F. MOORE

27 B

Survey & Plat of farm containing 48 acres situated in Doguassin Dist. York Co. Va. property of J. H. Forest dec. & divided as shown on map.
 G. W. Fitzhitt C. C.
 Apr. 17th 1894. Scale 200 ft. = 1 inch.



Plat of the land formerly belonging to Christopher Curtis Jr. and purchased by Isaac Hill and Richard Page. Surrendered by W. C. Wade, March 24, 1883.
 Contents: 91.00
 Scale: 4 chains to the inch.
 Chain: 4 Poles or 66 feet.
 Land situated in Wapton District York County, Virginia.
 Plotted from the most western angle.
 no. A

Bearings	Chains
1 N. 65° E.	3.26
2 N. 53 1/2° E.	2.83
3 N. 51° E.	1.45
4 N. 54 1/2° E.	9.81
5 N. 7° W.	4.95
6 N. 29 1/2° E.	0.25
7 N. 59 1/4° W.	4.96
8 N. 54 1/2° W.	4.18
9 N. 6 1/2° W.	3.25
10 N. 17° W.	5.60
11 N. 4 1/2° E.	3.13
12 N. 43 1/2° E.	4.16
13 N. 57 1/2° E.	1.89
14 N. 80° E.	2.93
15 N. 67 1/2° E.	3.13
16 S. 5 1/2° E.	1.63
17 S. 11 1/2° E.	1.80
18 S. 9 1/2° E.	67.29
19 N. 55° W.	5.04
20 N. 61° W.	4.21
21 N. 42 1/2° W.	3.68
22 N. 49 3/4° W.	9.73
23 N. 23 1/2° W.	9.44
24 N. 30 1/2° W.	17.54

THIS PLAT IS A COPY Original has been transmitted to Recorder Plat Book No. 1