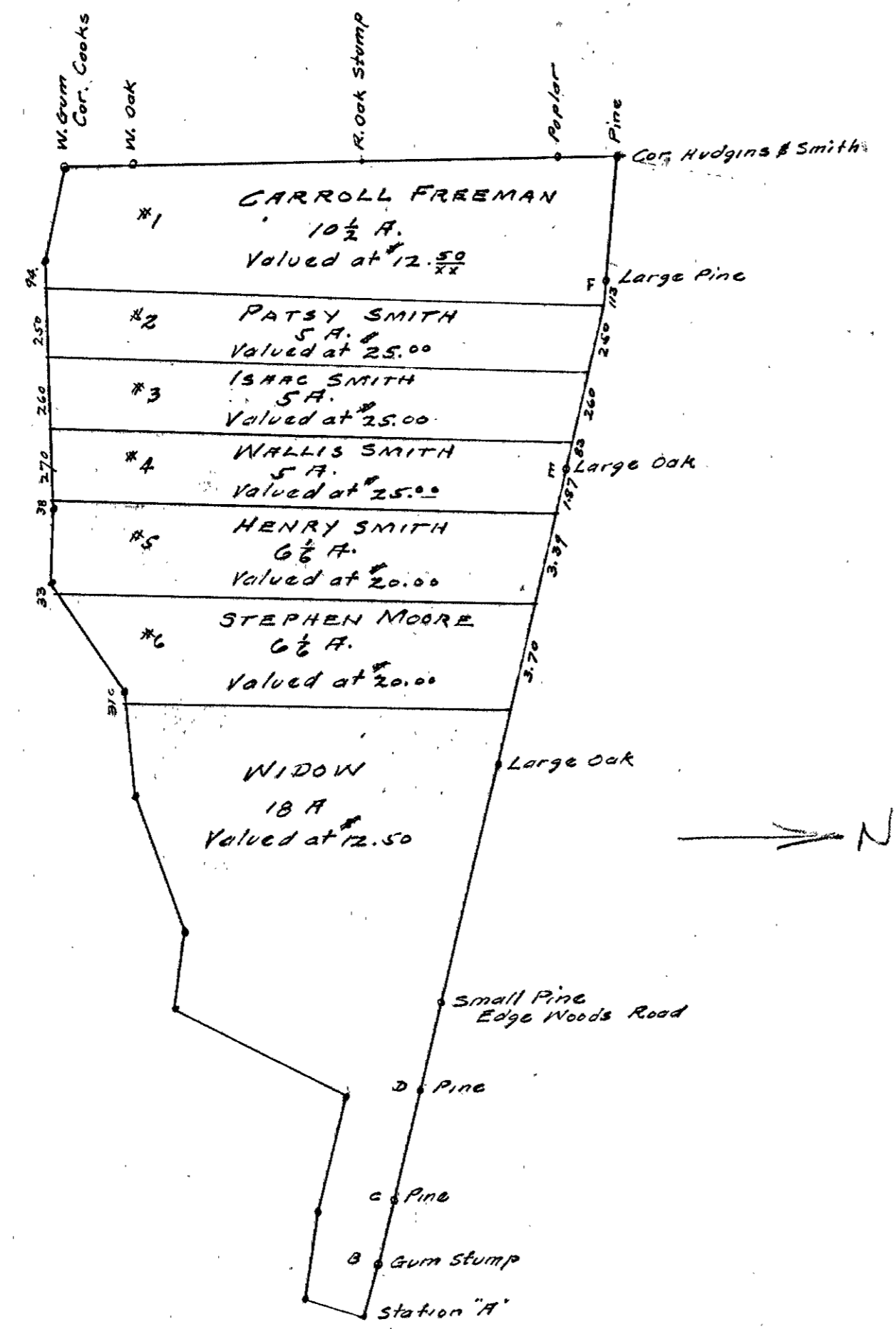
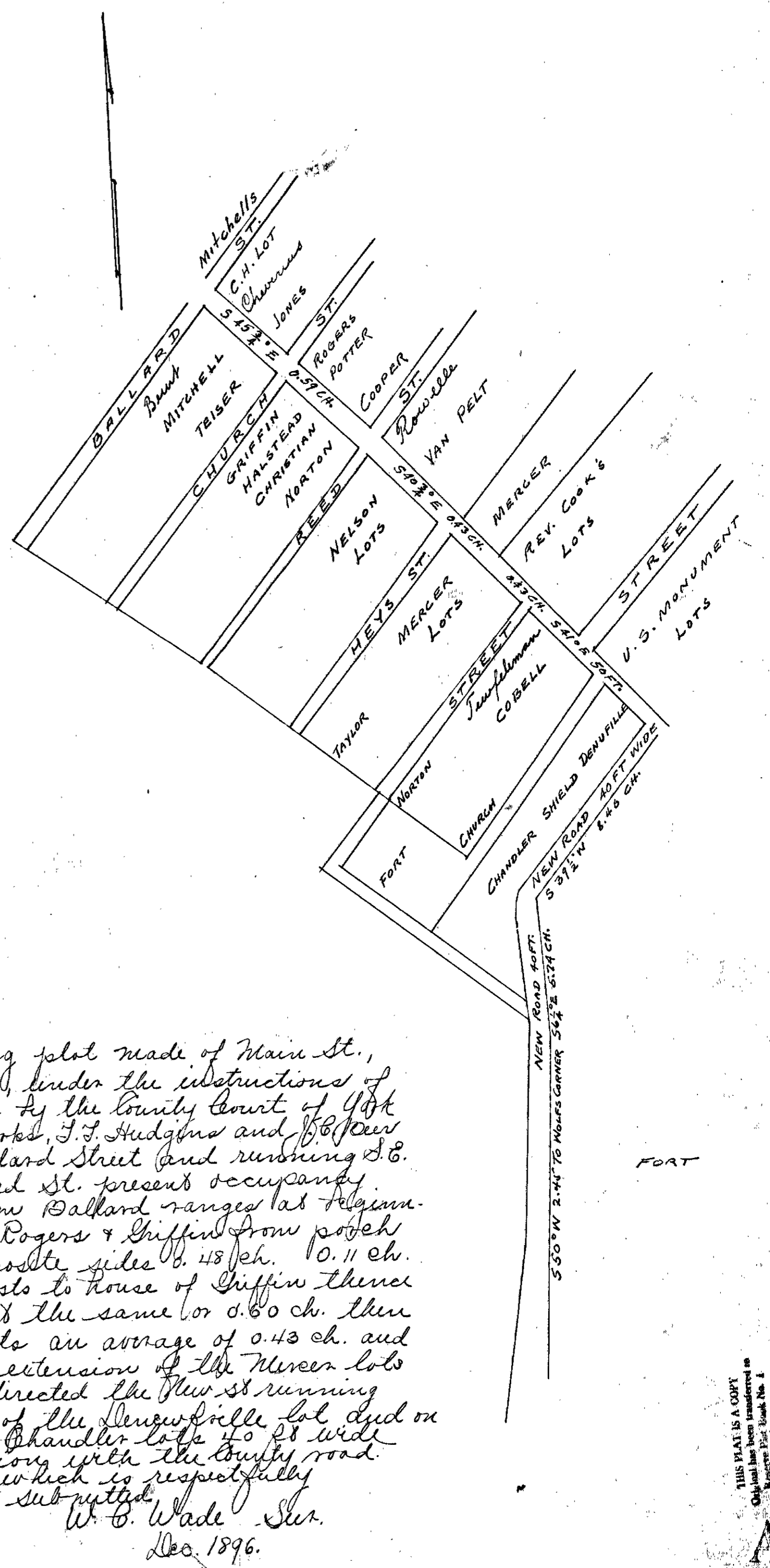


N.W. 78	1.94 chs.
N.W. 76 3/4	2.41 "
N.W. 77 3/4	4.17 "
N.W. 78	23.52 "
N.W. 78 3/4	7.06 "
N.W. 86 3/4	4.62 "
S.W. 1	2.16 "
S.E. 2 1/2	15.56 "
S.E. 3	2.56 "
S.E. 7 1/4	3.37 "
N.E. 87	9.12 "
S.E. 88 1/4	2.81 "
N.E. 83 1/2	4.80 "
N.E. 83 1/4	4.03 "
N.E. 88 1/4	4.82 "
N.E. 9 1/4	4.59 "
S.E. 83	2.86 "
N.E. 25 1/2	7.08 "
S.E. 78	4.63 "
S.E. 85	3.22 "
N.E. 7 1/2	1.98 "

AREA: 55.58 Acres  
 SCALE: 20 Poles  
 SURVEYED Feb. 1, 1878



*Happia Wood Land*  
 There are 75 acres according to valuation at \$12.50 per acre, giving the widow 25 but being ordered to take 6 acres from the woods and attach same amount to cleared land. I took 7, that being nearer the value and put 6 acres in field to balance (6 x 15 = 90) Field land valued at \$15.00, and Widow's wood land at \$12.50 with exception of about one acre, which to equalize, I give 7 acres in Woods for 6 acres in field.  
 R. H. Smith's Plat of Land.



The accompanying plat made of Main St., in Yorktown Va., under the instructions of viewers appointed by the County Court of York Co. Messrs R. W. Rooks, J. F. Hudgins and G. P. Peers beginning at Ballard Street and running S. 64° 45' 34" E. to Cor. Reed St. present occupant width of St. from Ballard ranges at beginning 55 1/2 ch. at Rogers & Griffing from post to posts on opposite side 48 1/2 ch. 10.11 ch. width from posts to house of Griffing thence to Reed St. about the same or 0.60 ch. then to the Mercer lots an average of 0.43 ch. and from the Eastern extension of the Mercer lots 40 ft. then as directed the New St running from the corner of the Newville lot and on by Shield and Chandler lots 40 ft wide to the intersection with the County road. All of which is respectfully submitted.  
 W. B. Wade Sur.  
 Dec. 1896.