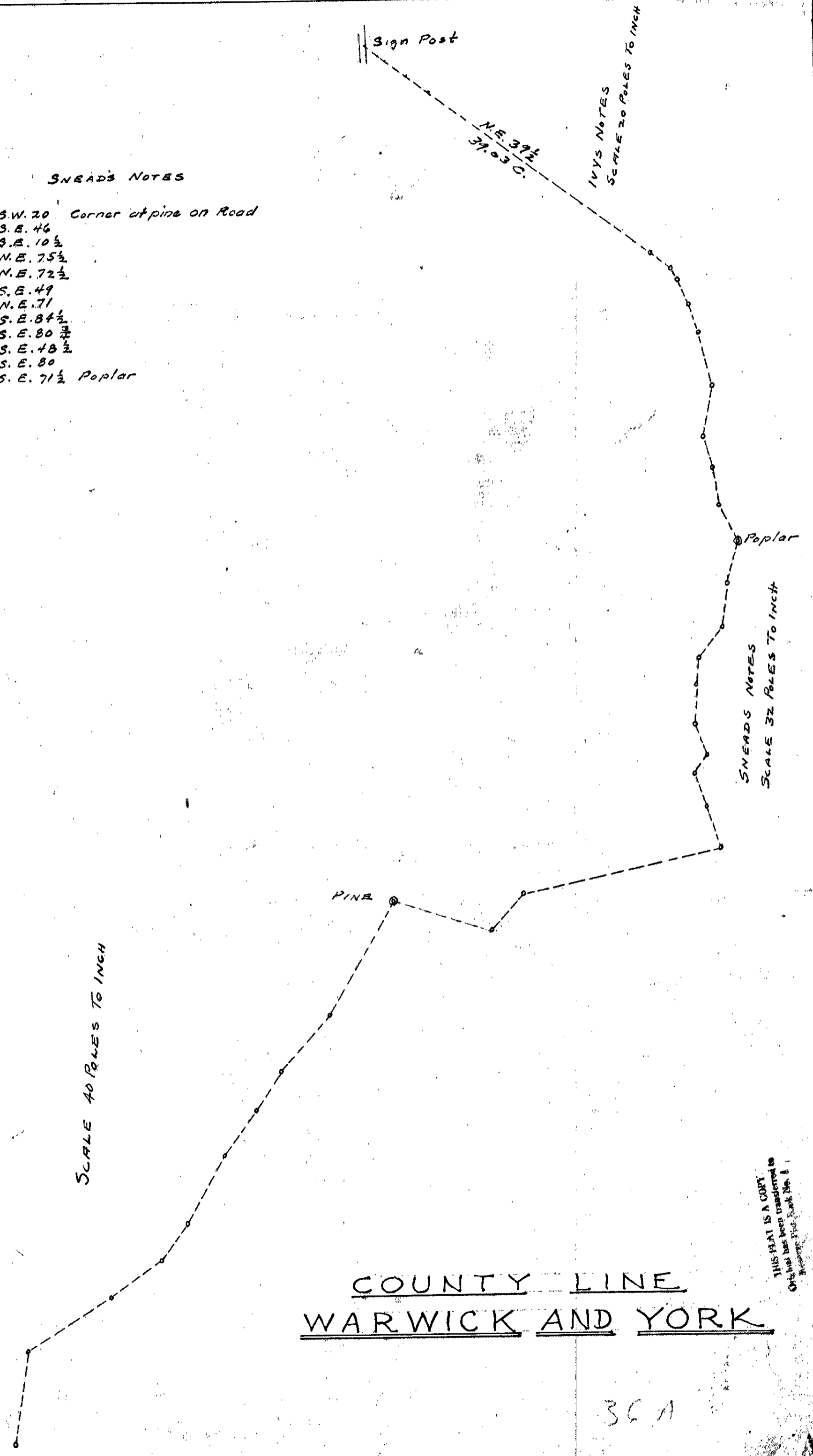


Survey and plat of 12 1/8 acres of land
 prop. of John H. Forest, dec. divided
 as shown on map, situated in York
 Co. Pa. in 4 acres, Widows
 Dower, 13 children 5/8 of an acre each.
 Scale 100 ft. = 1 inch.
 April 18, 1894.
 D. W. Fitchett. C.S.

B

SNEADS NOTES
 S.W. 20 Corner at pine on Road
 S.E. 46
 S.E. 10 1/2
 N.E. 75 1/2
 N.E. 72 1/2
 S.E. 49
 N.E. 71
 S.E. 84 1/2
 S.E. 80 3/4
 S.E. 48 1/2
 S.E. 80
 S.E. 71 1/2 Poplar



COUNTY LINE
 WARWICK AND YORK

36 A

THIS IS A COPY
 Original has been transferred to
 Record Book No. 1