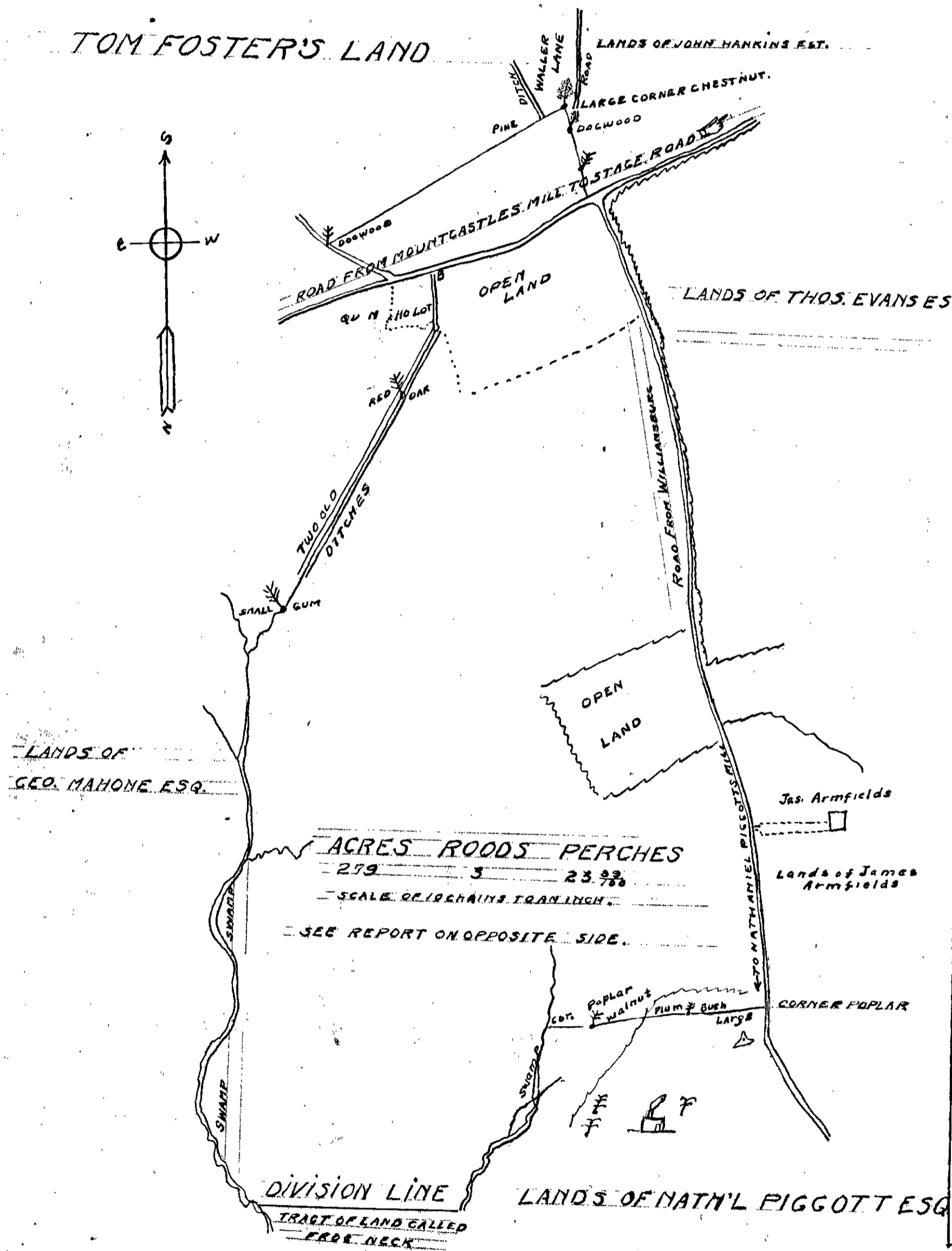


TOM FOSTER'S LAND



FIELD NOTES		
NO.	COURSE	DIST.
	51 1/2 W	4.00
	53 3/4 E	5.15
	52 7/8 W	4.73
	54 W	3.50
5	51 1/2 E	2.80
	52 1/4 E	2.94
	54 1/2 E	4.70
	52 1/2 E	4.80
	52 1/4 E	6.62
10	52 3/4 E	3.33
	59 E	6.08
	52 1/4 E	10.27
	53 1/4 E	19.01
	51 3/4 E	10.07
	N 60 1/4 E	1.16
	51 1/4 E	2.04
	510 1/4 E	5.75
	59 3/4 E	1.12
	N 56 1/4 E	2.49
	N 55 E	17.09
	N 55 3/4 W	4.62
	57 1/2 W	3.10
	N 8 3/4 W	3.73
	N 38 1/2 E	5.52
	N 37 1/4 E	15.44
	N 57 E	1.35
	N 57 1/2 E	2.00
	N 22 E	4.35
	N 12 3/4 E	5.84
	N 36 3/4 W	3.68
	N 26 3/4 W	3.61
	N 13 3/4 E	4.21
	N 15 3/4 E	2.09
	N 48 3/4 E	3.75
	N 44 1/4 E	3.20
	N 51 1/2 E	3.09
	N 25 1/4 E	2.84
	N 2 W	2.94
	N 20 3/4 W	2.83
	N 1 W	2.93
	N 40 E	1.70
	N 13 E	5.23
	N 43 1/4 W	6.12
	N 39 1/4 W	3.63
	N 13 3/4 W	3.68
	N 37 W	21.35
	532 1/2 W	3.80
	569 1/4 W	4.03
	535 3/4 W	3.15
	510 E	4.99
	510 1/2 W	1.74
	N 72 W	3.42
	N 82 3/4 W	8.52
	N 78 3/4 W	7.20

James City County Dec 2 21852
 The written is a survey and
 Plot of a tract of land lying in
 York County called "Strangers"
 belonging to the Estate of Isaac
 Castle dec'd. Surveyed at the
 instance of Robert Saunders Esq.
 the Executor in order to its sale and
 is found to contain including the lot
 lying on the south of the road two hundred
 and seventy nine acres three roods
 and twenty three perches & bounded as
 Exhibited on the Plot
 J. O. Piggott Sur.

It is hereby certified that this plot of the survey
 of "Strangers" is the one referred to in a
 deed dated on the 15th day of December 1853
 between myself Gov of S. M. Mountcastle &
 Mary A. Mountcastle on the one part & Wm. Mount
 castle & W. Lewis and Mary L. his wife
 on the other part and Samuel J.
 Bowden of the second part conveying
 the said tract of land to the said
 Samuel J. Bowden given
 under my hand at Williamsburg
 the 31st day of December 1853

R. Saunders.

Ch York County Court Clerk office the 16th day of January 1854 -
 This Plot was produced and the same together with the above certificate
 has been duly read by me in my office
 J. P. P. P. Clerk

THIS IS A COPY
 Original has been transmitted to
 Bureau of Plot Book No. 1