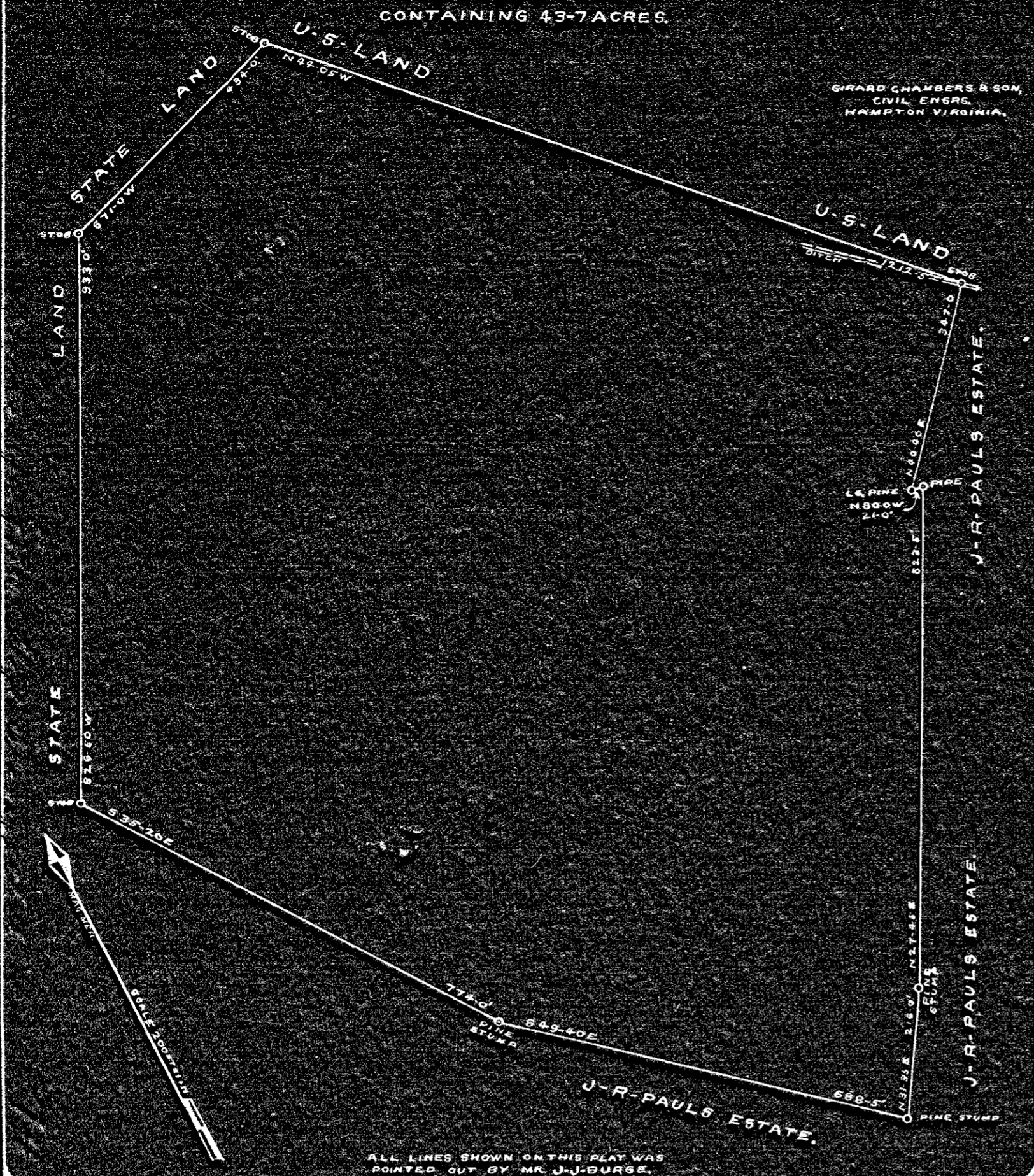


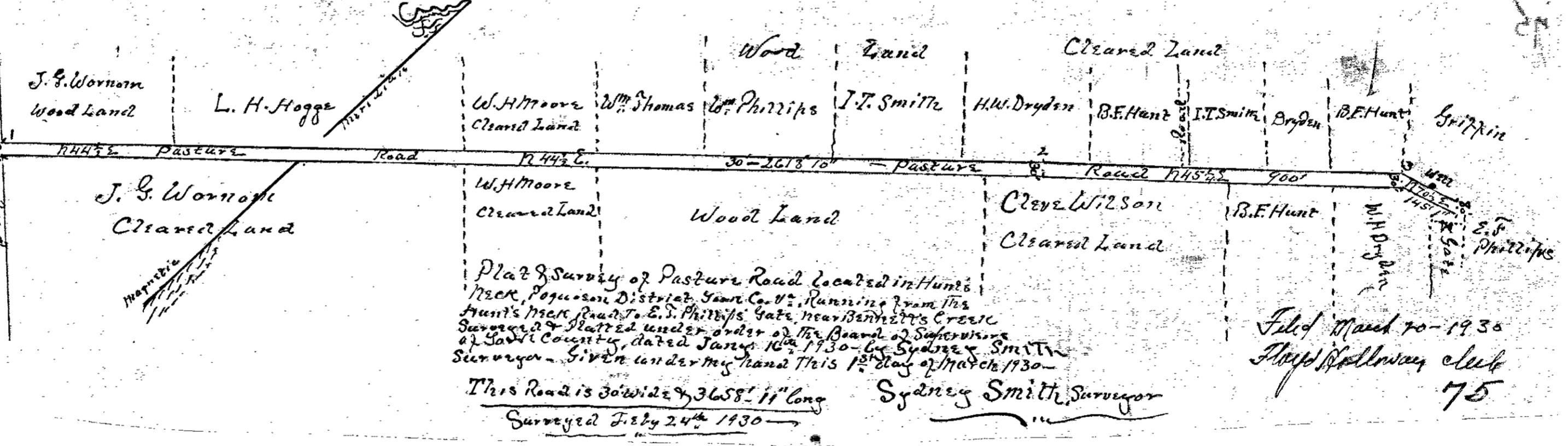
POQUOSON DIST. YORK CO. VIRGINIA. SEPT-13-1929.  
 PLAT OF  
**NANCY-E-BURGE'S LAND.**  
 FORMERLY PART OF  
 W-J-PAGE'S TRACT.  
 CONTAINING 43-7 ACRES.

GRAARD CHAMBERS & SON,  
 CIVIL ENGRS.  
 HAMPTON VIRGINIA.



74

Plat Book No. \_\_\_\_\_ Page 75



75

One Inch = 264 feet or 4 chains  
 549.20  
 114.0  
 549.20  
 114.0

Filed March 70-1930  
 Filed Holloway clerk  
 75