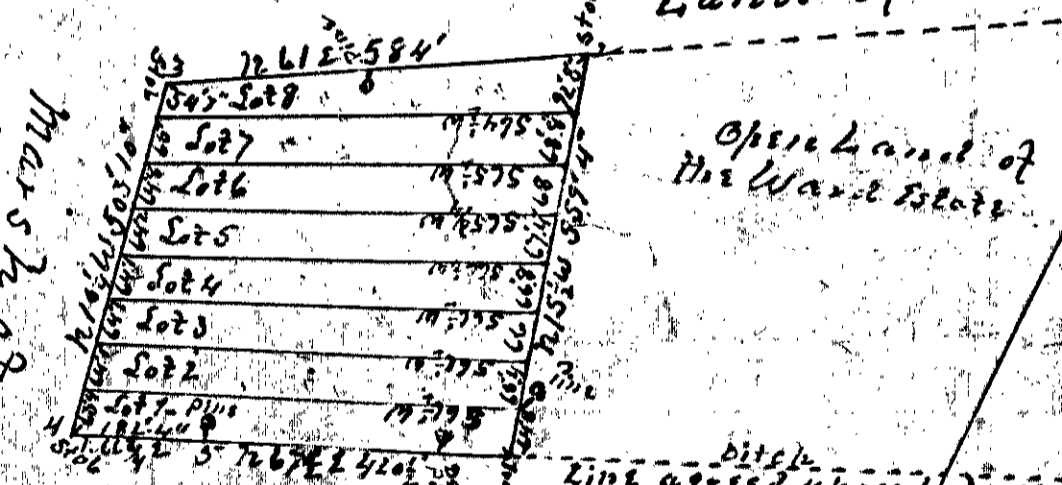


101

108

Each share of this piece
Contains $\frac{88}{100}$ Acres —
Land of C.T.

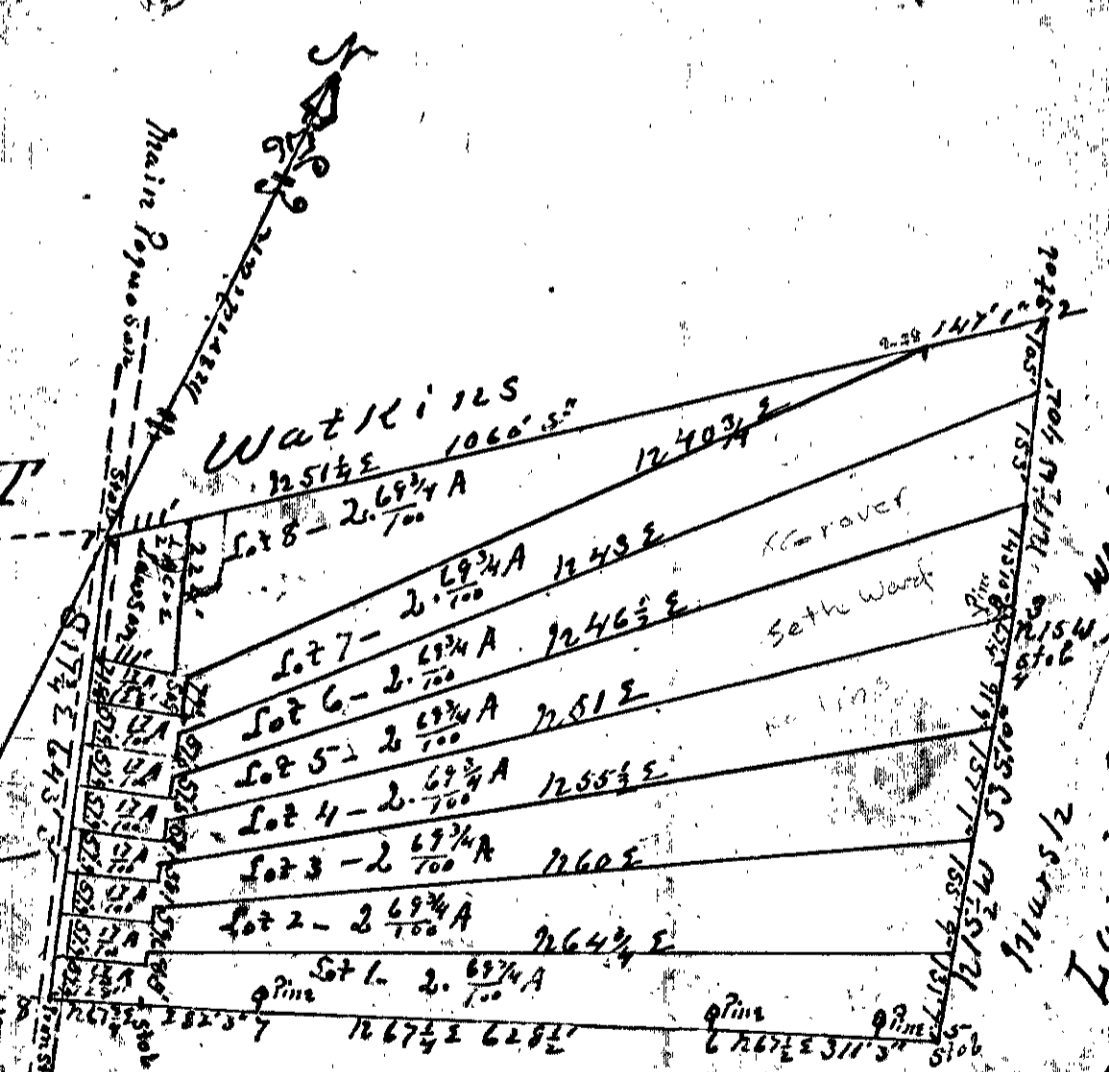
Marsh of
Ward Estate



W. J. Bradshaw's Land

Surveyed and partitioned for the heirs
at law of S.W. Ward dec'd by Sydney Smith
Surveyor for York County, July 13th, 14th, 15th
& 21st of July 1914. Given under my hand this
21st day of July 1914.

Sydney Smith
S.S.C.



W. J. Bradshaw's Land

A Plat and partition of two small tracts of
Wood land belonging to the estate of S.W.
Ward dec'd, situated in Poplar District among
the heirs at law. Each tract is divided into eight
shares, as shown and indicated on the plat. The larger
tract situated on the east of the Main Road contains $33\frac{44}{100}$
Acres, which after deducting the $\frac{1}{4}$ acre cut off in the
Corner for Geo. Lawson, leaves $22\frac{24}{100}$ Acres to be divided among
the eight heirs, giving to each $2\frac{84}{100}$ Acres, as follows: $\frac{11}{100}$ Acres on
the Road & $2\frac{67}{100}$ Acres in the woods. The smaller tract situated on the
west of the cleared land contains $7\frac{4}{100}$ Acres, giving to each
heir $\frac{88}{100}$ Acres. The courses and distances are given on the plat.
Sydney Smith, S.S.C.

Scale
Four chains = one inch
264 Feet = one inch

103

Ward of
James Taylor
Ward of
Henry Simpson
Land