

YORK

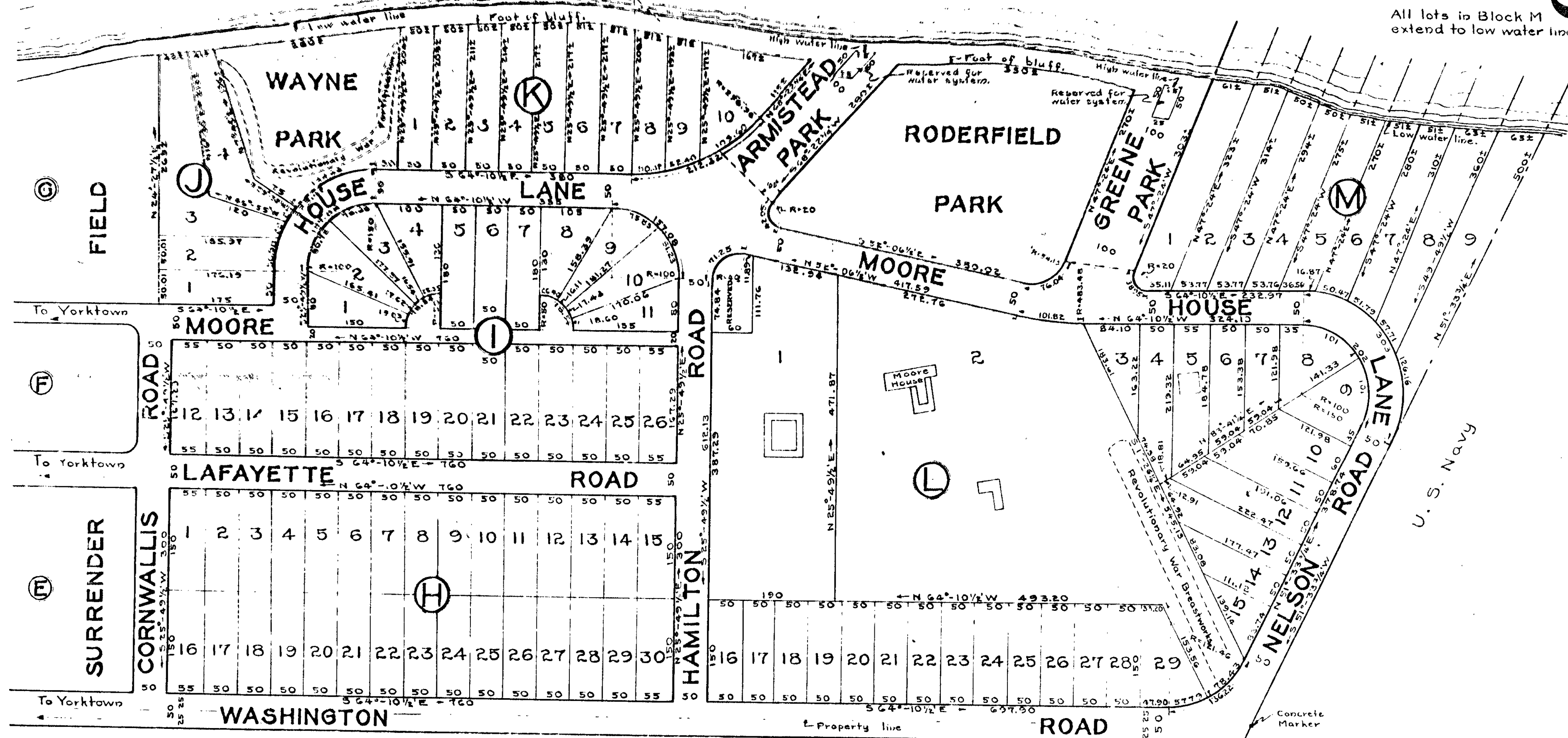
Lots 3 & 4 in Block J extend to present foot of bluff.

All lots in Block K extend to present foot of bluff.

RIVER

All lots in Block M extend to low water line.

193



MAP OF
SURRENDER FIELD
 SECTION B
 BEING A PORTION OF "MOORE HOUSE TRACT" OF
 TEMPLE FARM
 ADJACENT TO
 YORKTOWN-YORK COUNTY
 VIRGINIA

CHAPIN & CLARK
 REALTORS-RICHMOND-VIRGINIA
 SALES AGENTS

Plat Book No. 1 Page 193

J. Temple Waddill
 Certified Civil Engineer
 Richmond, Va.

Scale: 1"=100'

April, 8, 1925

Book No. 56, pp. 54-9
 " " 64, p. 7

Plat Book No. 1 Page 193

THIS PLAT IS A COPY
 OF THE ORIGINAL PLAT AS RECORDED IN
 PLAT BOOK NO. 1