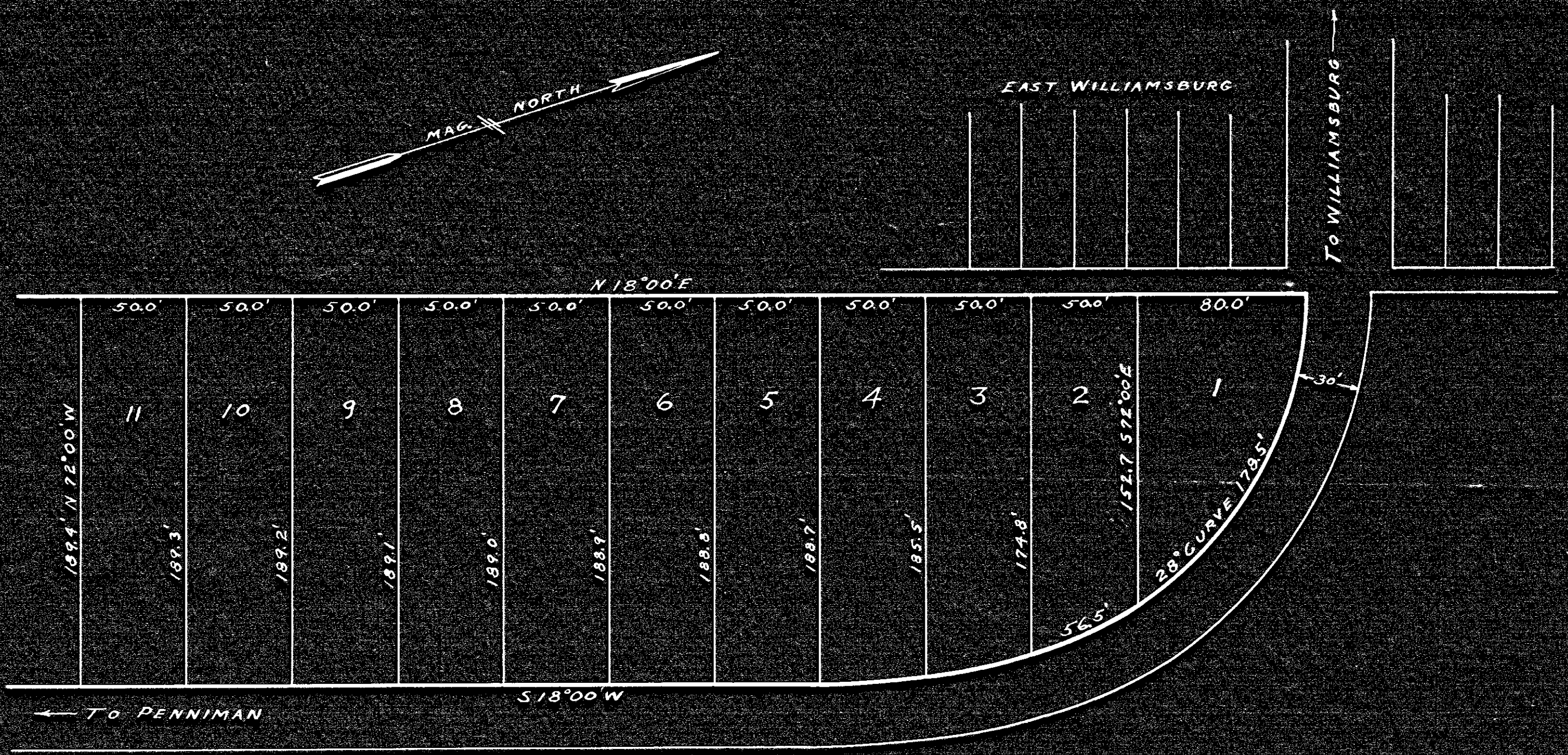


Page 253



PLAT SHOWING SUBDIVISION OF A PART
 OF A.W. HITCHENS PROPERTY BORDERING
 ON NEW PENNIMAN ROAD
 BRUTON DISTRICT YORK COUNTY, VA.
 SCALE: 1" = 50' OCT. 1934
 SURVEYED BY V.D. McMANUS