

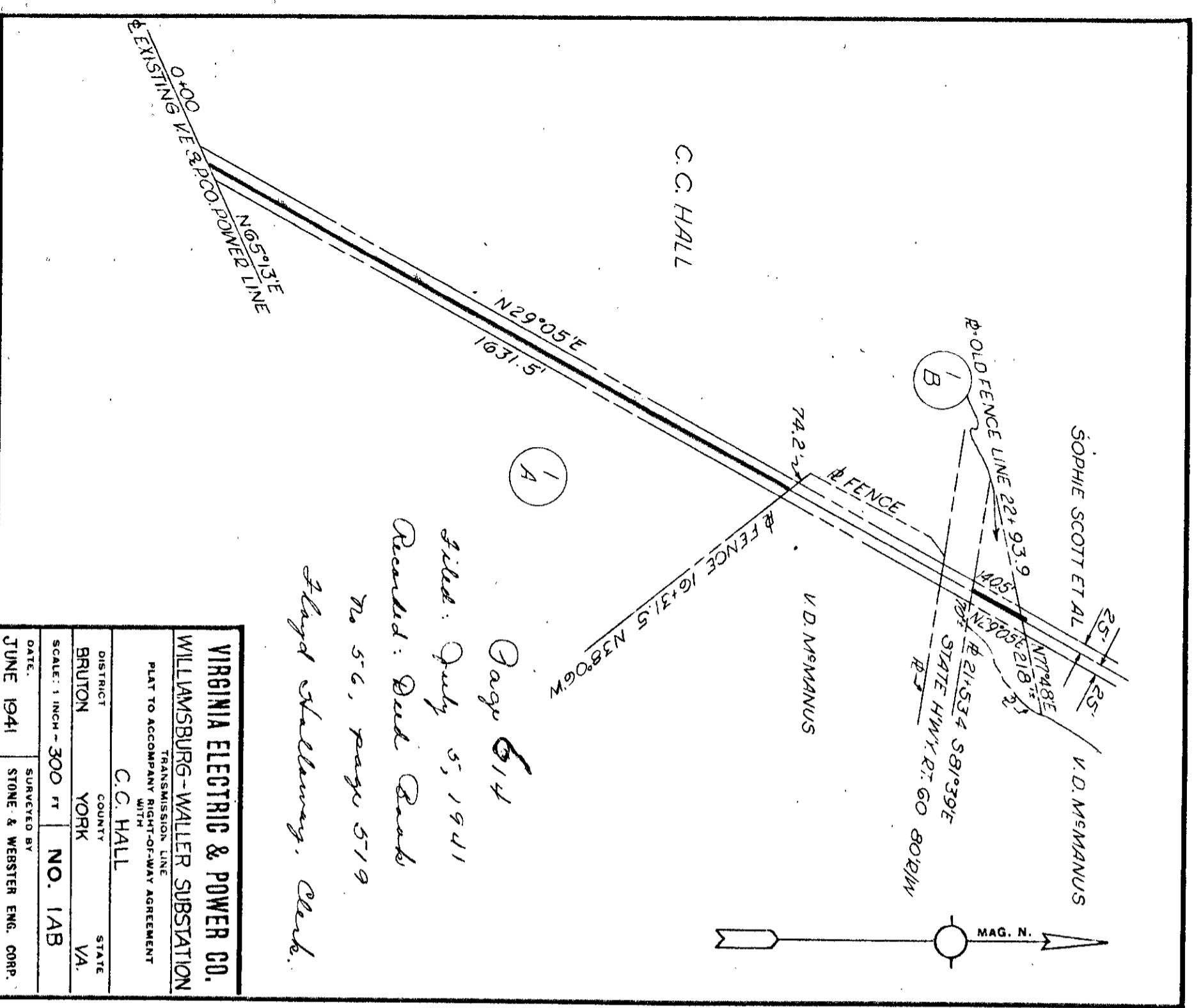
VIRGINIA ELECTRIC & POWER CO.
 Johnson Extension
 PLAT TO ACCOMPANY RIGHT-OF-WAY AGREEMENT
 WITH
 AS SHOWN
 DISTRICT BRUTON COUNTY YORK VA
 SCALE: 1 INCH = 200 FT
 C.W.L. WMBG # 1509

DRAWER NO. SHEET NO.

612

614

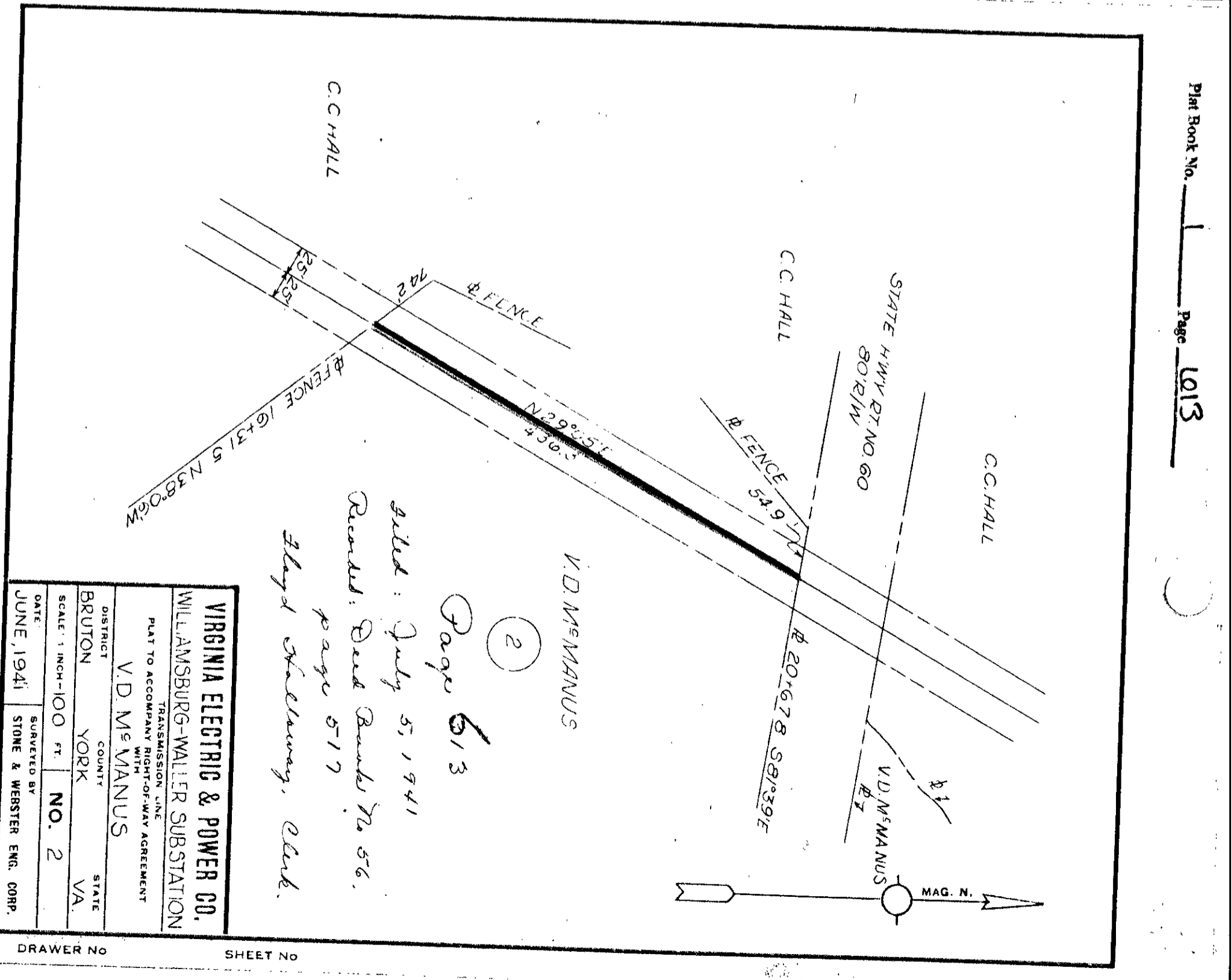
Plat Book No. 1 Page 6014



Page 614
 filed July 5, 1941
 Rec'd: Bird Book
 No. 56, page 519
 Floyd Stellingmy, Clerk.

VIRGINIA ELECTRIC & POWER CO.
 WILLIAMSBURG-WALLER SUBSTATION
 TRANSMISSION LINE
 PLAT TO ACCOMPANY RIGHT-OF-WAY AGREEMENT
 WITH
 C.C. HALL
 DISTRICT BRUTON COUNTY YORK VA
 SCALE: 1 INCH = 300 FT
 NO. 1AB
 SURVEYED BY STONE & WEBSTER ENG. CORP.
 JUNE 1941

DRAWER NO. SHEET NO.



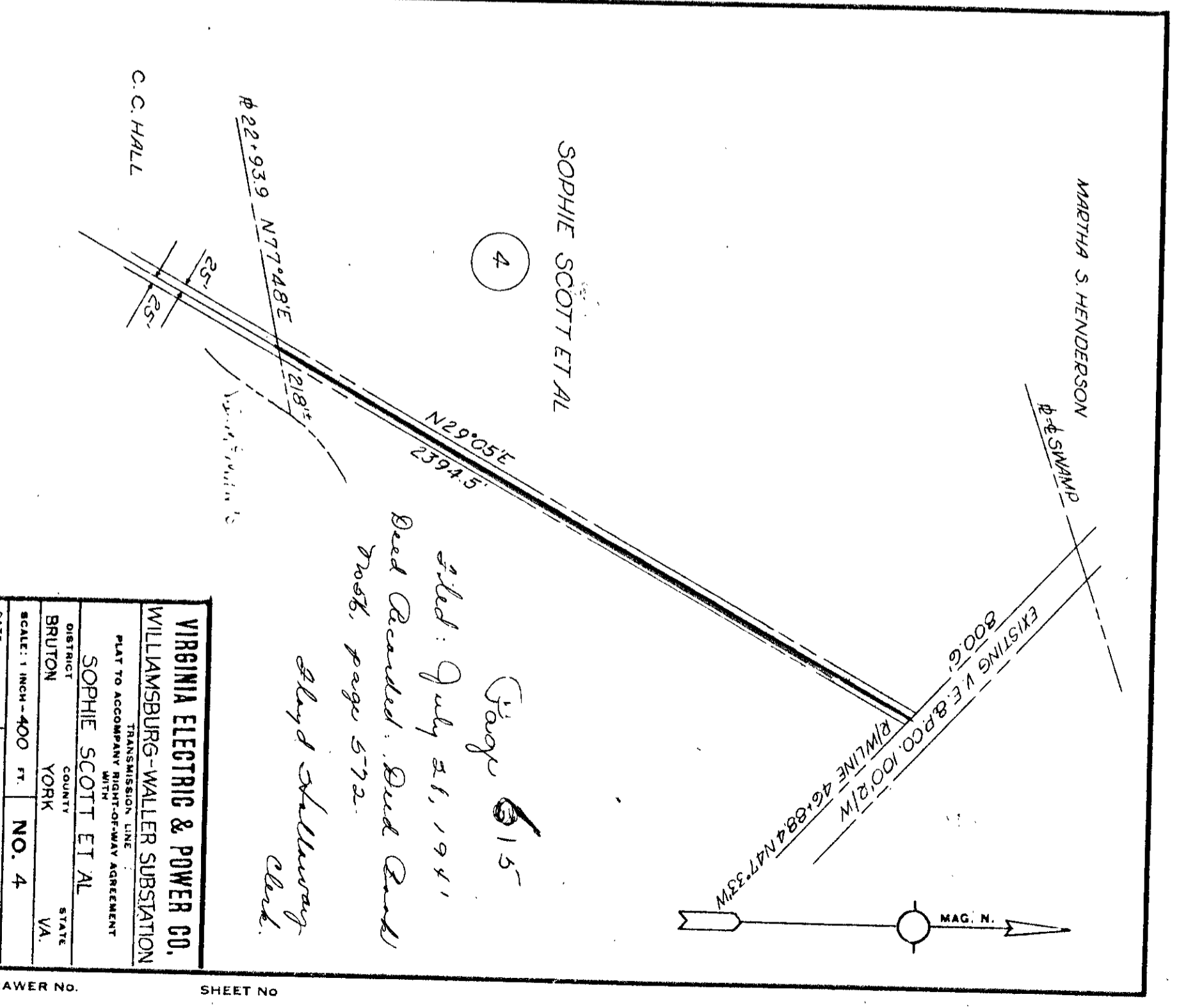
VIRGINIA ELECTRIC & POWER CO.
 WILLIAMSBURG-WALLER SUBSTATION
 TRANSMISSION LINE
 PLAT TO ACCOMPANY RIGHT-OF-WAY AGREEMENT
 WITH
 V.D. McMANUS
 DISTRICT BRUTON COUNTY YORK VA
 SCALE: 1 INCH = 100 FT
 NO. 2
 SURVEYED BY STONE & WEBSTER ENG. CORP.
 JUNE 1941

DRAWER NO. SHEET NO.

613

615

Plat Book No. 1 Page 6015



Page 615
 filed July 21, 1941
 Rec'd: Bird Book
 Book, page 572.
 Floyd Stellingmy, Clerk.

VIRGINIA ELECTRIC & POWER CO.
 WILLIAMSBURG-WALLER SUBSTATION
 TRANSMISSION LINE
 PLAT TO ACCOMPANY RIGHT-OF-WAY AGREEMENT
 WITH
 SOPHIE SCOTT ET AL
 DISTRICT BRUTON COUNTY YORK VA
 SCALE: 1 INCH = 400 FT
 NO. 4

DRAWER NO. SHEET NO.