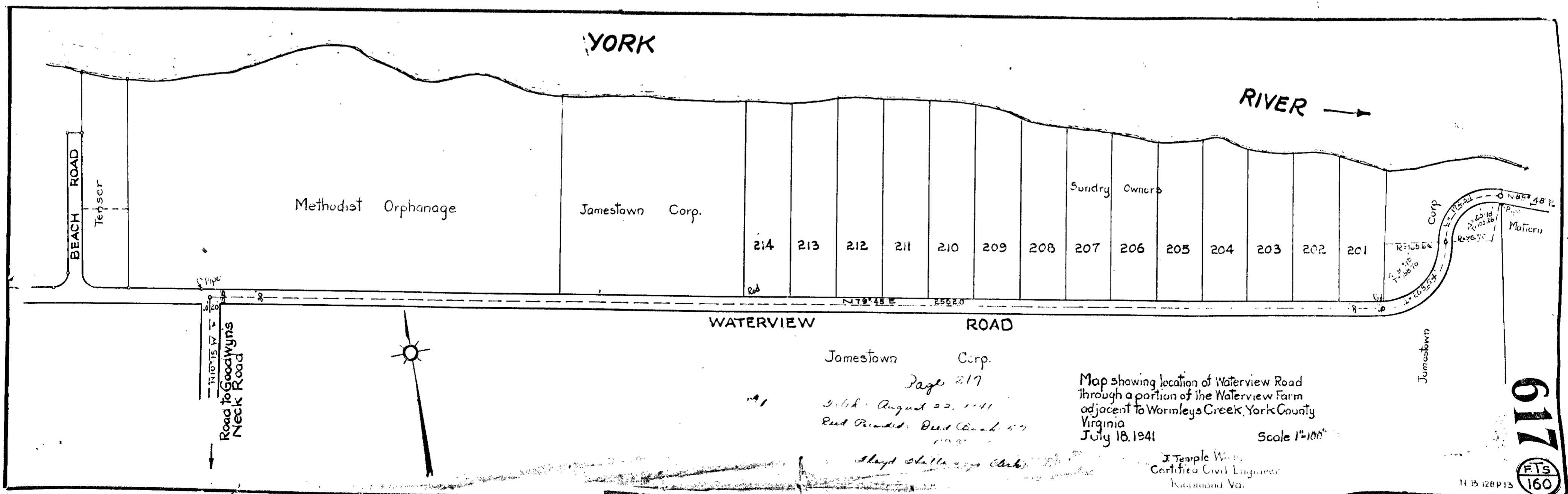


Filed: July 28, 1941  
 Book Recorded: Book 574  
 No. 56, page 574  
 Floyd S. Halloway, Clerk.

VIRGINIA ELECTRIC & POWER CO.  
 WILLIAMSBURG-WALLER SUBSTATION  
 DISTRIBUTION LINE  
 PLAT TO ACCOMPANY HIGHWAY AGREEMENT  
 MARTHA S. HENDERSON  
 COUNTY YORK  
 STATE VA.  
 DISTRICT BRUTON  
 SCALE 1 INCH = 100 FT  
 NO. 5  
 SURVEYED BY

616

DRAWER NO SHEET NO.



Jamestown Corp.  
 Page 617  
 Filed August 22, 1941  
 Book Recorded: Book 574  
 No. 57, page 574  
 Floyd S. Halloway, Clerk.

Map showing location of Waterview Road  
 through a portion of the Waterview Farm  
 adjacent to Wormleys Creek, York County,  
 Virginia  
 July 18, 1941  
 Scale 1" = 100'

J. Temple Wain  
 Certified Civil Engineer  
 Richmond, Va.

617  
 FTS  
 160  
 H B 128 P 13