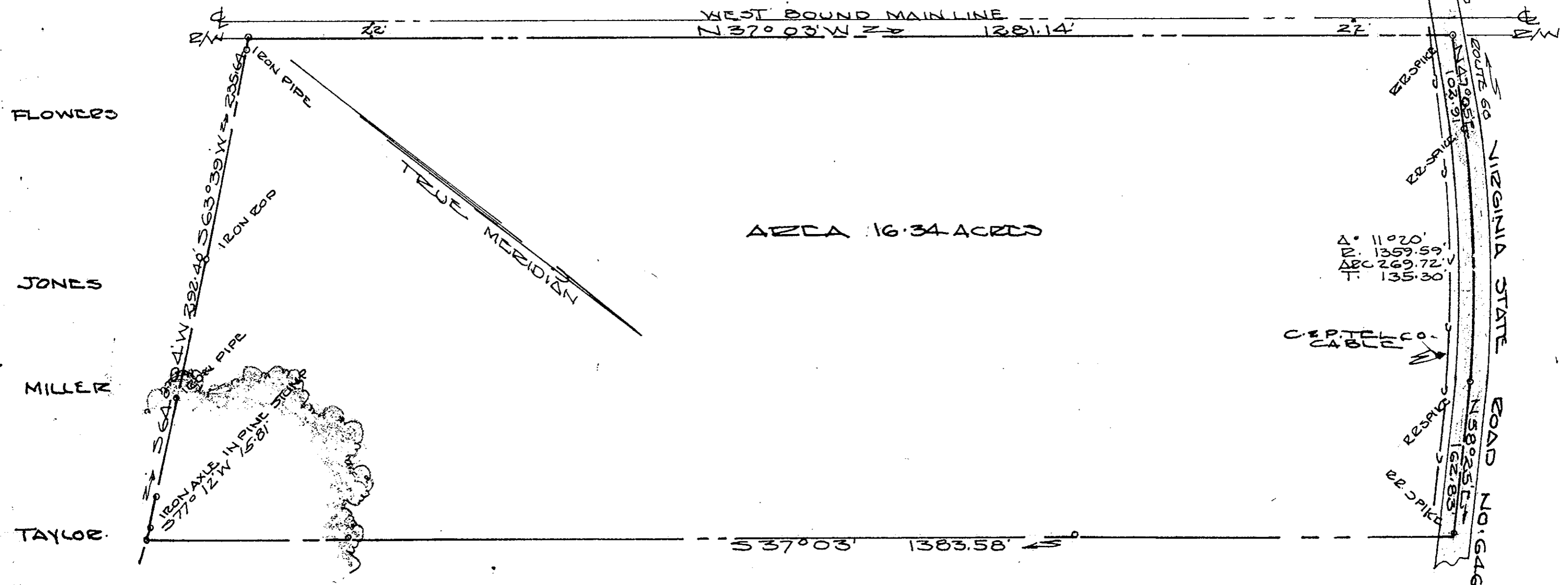


# CHESAPEAKE & OHIO RAILWAY



AREA 16.34 ACRES

$\Delta$ : 11° 20'  
 B: 1359.59'  
 $\Delta$ BC: 269.72'  
 T: 135.30'

**JULIAN I. LEVORSEN**

Filed in the Clerk's Office, Circuit Court, York Co., Va.  
 the 8<sup>th</sup> day of July, 1968

Teste:  
 MELVILLE I. BRYANT, Clerk

Catherine Bender D. C.

Plat Book 8, Page 123

VINCENT O. WINDGOS  
 WILLIAMSBURG, VIRGINIA  
 REGISTERED BY STATE  
 LAND SURVEYOR 191  
 HIGHWAY ENGINEER 197  
 CIVIL ENGINEER 1929

BRUTON DIST. YORK COUNTY VIRGINIA

PLAT SHOWING BOUNDARY SURVEY OF A TRACT OF LAND SURVEYED FOR

JULIAN I. LEVORSEN ESQ.  
 DEPT. 30-1967  
 RAILWAY R/W BASED ON EVALUATION SHEET NO. V2-29 JUNE 16, 1916  
 SCALE 1" = 100'  
 7633

Wm D. McHann C.E.