

Teste:

MELVILLE L. BRYANT, Clerk
Edith M. Goode D. C.

APPROVED

YORK COUNTY BOARD OF SUPERVISORS

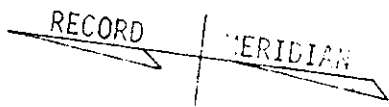
BY William P. Greene

PLAT APPROVING AGENT.

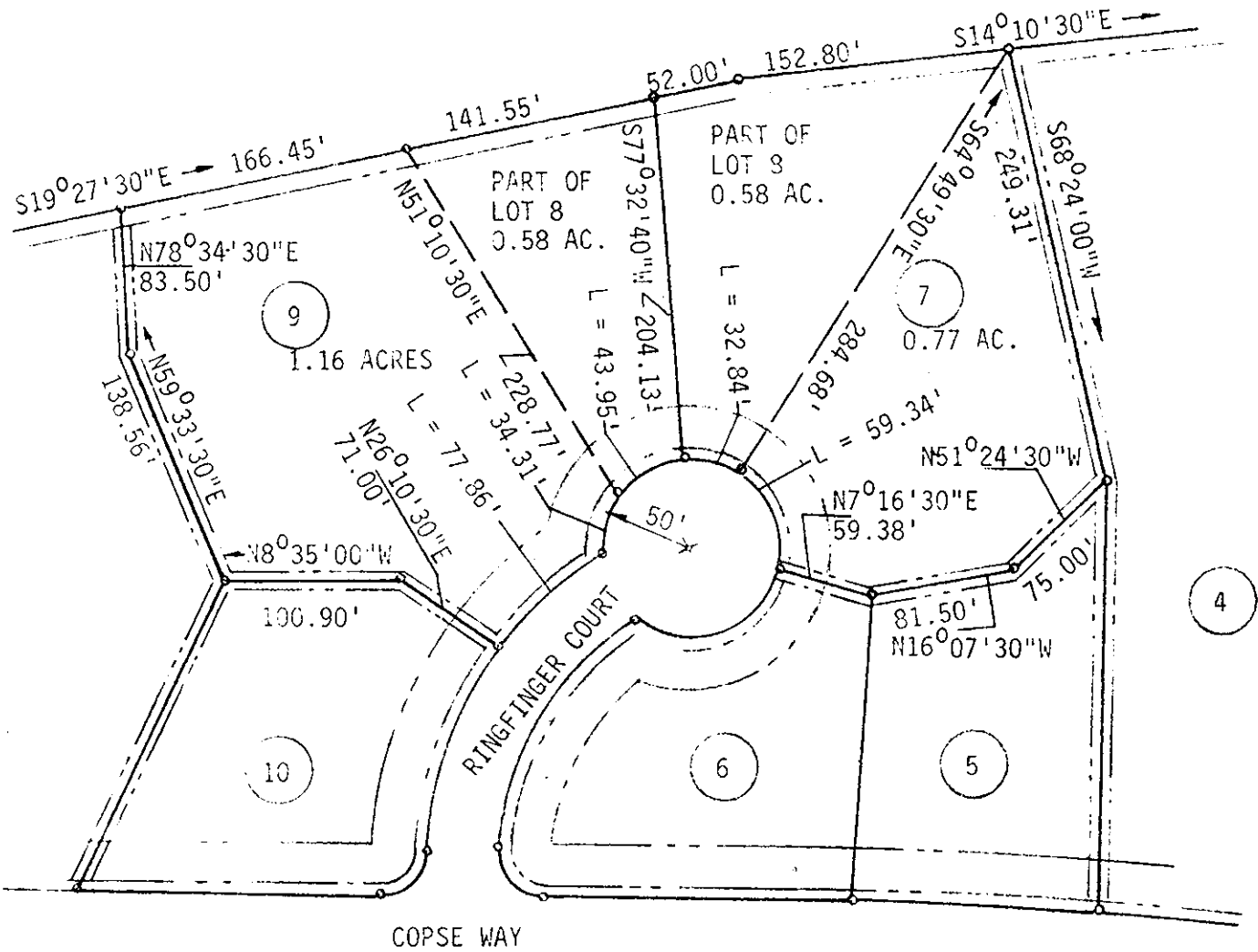
DATE 5-23-69

VARIATIONS APPROVED

DATE _____



CAMP PEARY



W. & B. ASSOCIATES, ENGINEERS & SURVEYORS, P.O. BOX 633 WILLIAMSBURG, VIRGINIA 23185

LEGEND: ○ = IRON PIN, □ = MONUMENT, — = PROPERTY LINE, - - - = CENTERLINE, - - - - = EASEMENT LINE

PLAT SHOWING THE SUBDIVISION OF LOT 8, SECTION EG, QUEENS LAKE SUBDIVISION, LYING IN BRUTON DISTRICT, YORK COUNTY, VIRGINIA

1" = 100'	REF. --	CLOSURE --	DATE: April 30, 1969	AREA 1.16 AC.
-----------	---------	------------	----------------------	---------------