

Filed in the Clerk's Office, Circuit Court, York Co., Va.  
the 12th day of June 1969

Teste:

MELVILLE J. BRYANT, Clerk

*Edith Rode*

D. C.

169

# APPROVED

YORK COUNTY BOARD OF SUPERVISORS

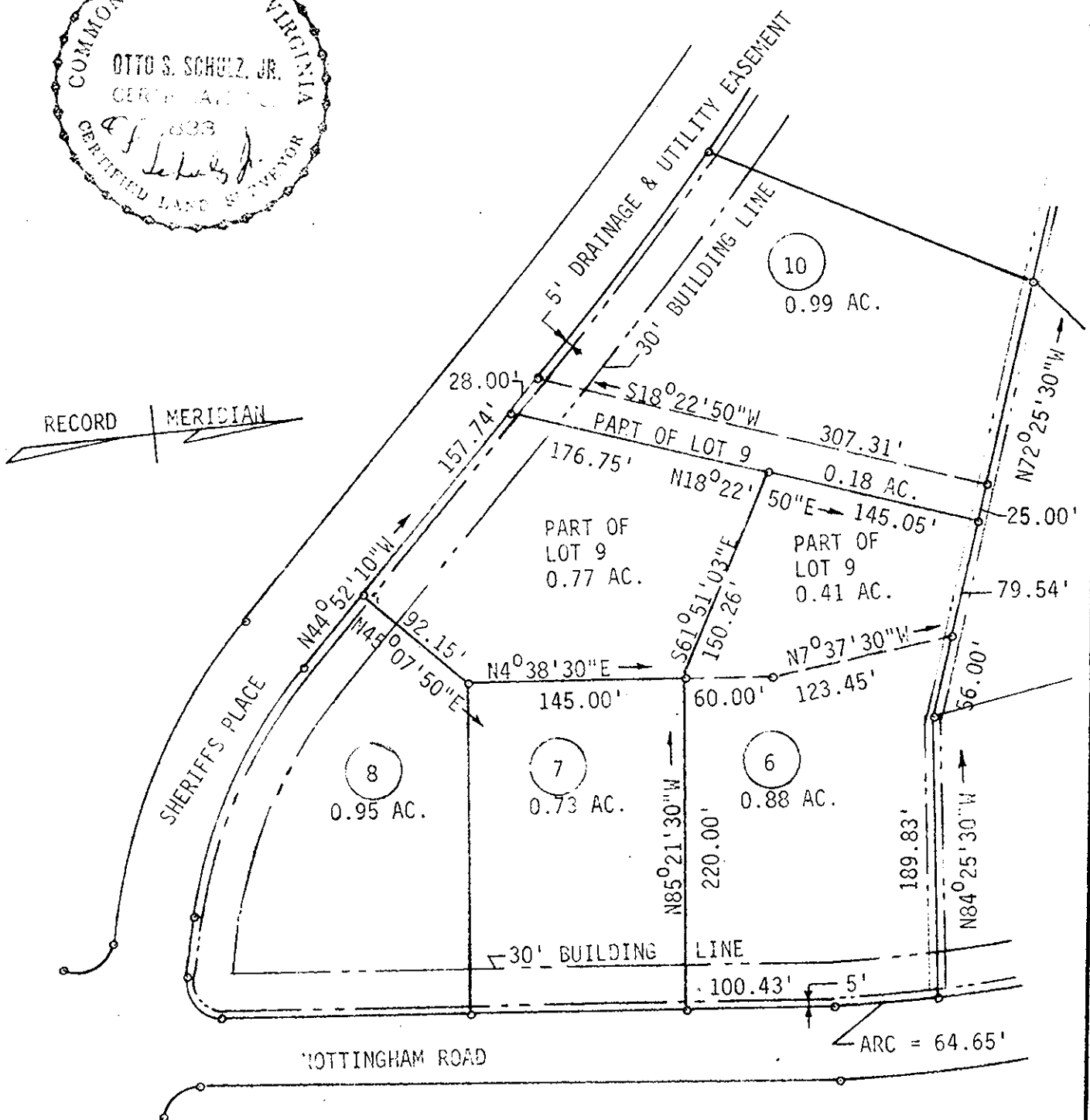
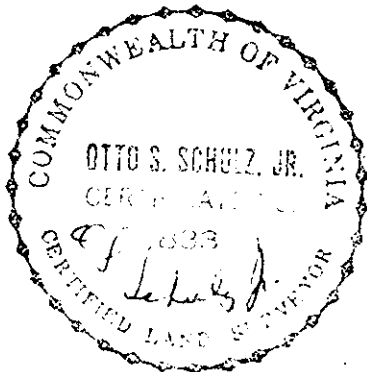
BY *William P. Barrett*

PLAT APPROVING AGENT.

DATE 5-23-69

VARIATIONS APPROVED

DATE



L.V. WOODSON & ASSOCIATES, ENGINEERS & SURVEYORS, P.O. BOX 633 WILLIAMSBURG, VIRGINIA 23185

LEGEND: ○=IP=IRON PIN, □=MON=MONUMENT, —=PROPERTY LINE, - - -=CENTERLINE, - - - - =EASMENT LINE

PLAT SHOWING SUBDIVISION OF LOT 9, SECTION EK, PART 1,  
QUEENS LAKE SUBDIVISION, LYING IN BRUTON DISTRICT, YORK  
COUNTY, VIRGINIA

SCALE 1"=100 REF: CLOSURE 1/8000 DATE: April 30, 1969 AREA 1.36 AC.