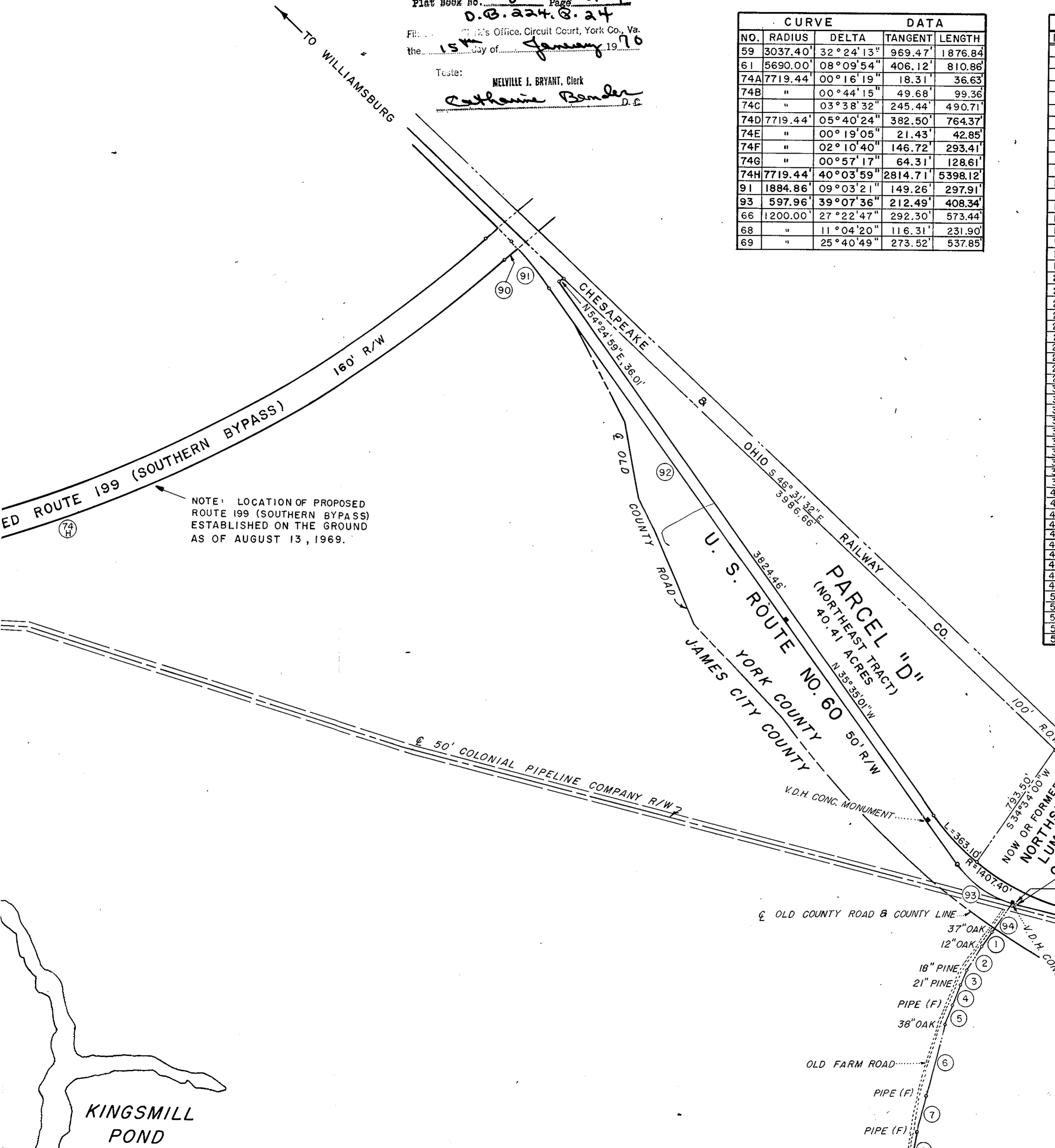


Plat Book No. 8 Page 209
O.B. 224.8.24
 Filed in Clerk's Office, Circuit Court, York Co., Va.
 the 15th day of January, 1970
 Teste:
 MELVILLE J. BRYANT, Clerk
Catherine Bender D.E.

CURVE DATA				
NO.	RADIUS	DELTA	TANGENT	LENGTH
59	3037.40'	32° 24' 13"	969.47'	1876.84'
61	5690.00'	08° 09' 54"	406.12'	810.86'
74A	7719.44'	00° 16' 19"	18.31'	36.63'
74B	"	00° 44' 15"	49.68'	99.36'
74C	"	03° 38' 32"	245.44'	490.71'
74D	7719.44'	05° 40' 24"	382.50'	764.37'
74E	"	00° 19' 05"	21.43'	42.85'
74F	"	02° 10' 40"	146.72'	293.41'
74G	"	00° 57' 17"	64.31'	128.61'
74H	7719.44'	40° 03' 59"	2814.71'	5398.12'
91	1884.86'	09° 03' 21"	149.26'	297.91'
93	597.96'	39° 07' 36"	212.49'	408.34'
66	1200.00'	27° 22' 47"	292.30'	573.44'
68	"	11° 04' 20"	116.31'	231.90'
69	"	25° 40' 49"	273.52'	537.85'

PROPERTY LINE DATA					
NO.	BEARING	LENGTH	NO.	BEARING	LENGTH
1	S 36° 49' 29" W	107.36'	55	S 89° 29' 54" W	397.38'
2	S 31° 01' 48" W	155.89'	56	N 86° 53' 52" W	142.99'
3	S 26° 01' 28" W	97.20'	57	N 52° 25' 53" W	164.01'
4	S 19° 05' 42" W	132.70'	58	N 16° 40' 51" W	790.96'
5	S 20° 02' 29" W	117.70'	59	SEE CURVE DATA	
6	S 14° 20' 18" W	402.58'	60	N 24° 35' 36" W	391.67'
7	S 15° 14' 51" W	252.48'	61	SEE CURVE DATA	
8	S 10° 17' 34" W	237.93'	62	N 72° 33' 10" E	333.19'
9	S 29° 52' 24" W	218.51'	63	N 30° 54' 53" E	200.48'
10	S 41° 01' 01" W	158.73'	64	N 25° 47' 44" E	2164.71'
11	S 65° 58' 08" W	190.43'	65	N 27° 36' 41" W	357.09'
12	S 79° 41' 56" W	180.05'	66	SEE CURVE DATA	
13	S 65° 43' 12" W	99.42'	67	N 31° 30' 00" E	1335.00'
14	S 53° 11' 34" W	103.58'	68	SEE CURVE DATA	
15	S 47° 45' 45" W	85.55'	69	SEE CURVE DATA	
16	S 40° 42' 18" W	43.06'	70	DUE NORTH	48.19'
17	S 15° 44' 10" W	45.08'	71	S 61° 27' 44" W	1119.84'
18	S 07° 08' 38" W	975.41'	72	N 07° 35' 16" W	283.14'
19	S 23° 21' 30" W	103.08'	73	N 12° 59' 51" E	1.82'
20	S 15° 32' 46" W	87.95'	74	SEE CURVE DATA	
21	S 12° 21' 40" W	117.20'	75	S 77° 56' 14" E	152.99'
22	S 08° 48' 40" W	96.20'	76	N 61° 27' 44" E	524.63'
23	S 22° 23' 50" E	51.46'	77	S 43° 59' 10" E	433.03'
24	S 21° 51' 50" E	76.66'	78	S 43° 59' 10" E	345.19'
25	S 12° 24' 39" E	39.35'	79	N 46° 00' 50" E	15.00'
26	S 01° 06' 00" E	61.73'	80	N 46° 00' 50" E	15.00'
27	S 01° 46' 30" W	76.85'	81	N 43° 59' 10" W	40.42'
28	S 00° 58' 51" E	99.55'	82	N 44° 23' 51" E	210.00'
29	S 11° 49' 00" E	85.02'	83	N 43° 59' 10" W	63.28'
30	S 22° 38' 20" E	59.58'	84	N 25° 36' 17" E	340.84'
31	S 21° 41' 35" E	79.65'	85	N 43° 59' 10" W	232.32'
32	S 08° 44' 00" E	173.98'	86	N 43° 59' 10" W	96.50'
33	S 14° 56' 10" W	180.98'	87	N 43° 59' 10" W	274.71'
34	S 26° 42' 40" W	131.71'	88	N 61° 26' 16" E	1658.59'
35	S 45° 48' 50" W	76.15'	89	S 44° 02' 55" E	1103.97'
36	S 43° 42' 40" W	49.89'	90	N 48° 13' 16" E	109.32'
37	S 37° 25' 50" W	259.09'	91	SEE CURVE DATA	
38	S 52° 56' 30" W	409.51'	92	S 35° 35' 01" E	4140.26'
39	S 57° 48' 40" W	327.15'	93	SEE CURVE DATA	
40	S 19° 52' 00" W	258.94'	94	S 35° 11' 06" W	210.74'
41	S 12° 06' 00" E	950.01'	95	N 47° 24' 18" W	352.50'
42	N 85° 25' 46" W	859.88'	96	N 13° 13' 40" E	2200.74'
43	S 89° 46' 34" W	783.71'	97	S 77° 56' 14" E	1277.74'
44	S 89° 40' 06" W	237.13'	98	S 52° 15' 05" W	251.74'
45	S 88° 19' 39" W	401.83'	99	N 12° 59' 51" E	242.60'
46	S 87° 43' 34" W	530.79'	100	S 77° 56' 14" E	152.99'
47	S 86° 58' 14" W	1035.51'	101	N 60° 28' 41" W	139.67'
48	S 89° 13' 45" W	812.30'	102	N 26° 09' 36" W	54.75'
49	N 89° 09' 42" W	734.79'			
50	S 85° 32' 27" W	387.62'			
51	N 89° 05' 22" W	1081.20'			
52	N 88° 32' 33" W	1009.76'			
53	N 85° 55' 39" W	328.71'			
54	N 82° 15' 43" W	509.20'			



NOTE: LOCATION OF PROPOSED ROUTE 199 (SOUTHERN BYPASS) ESTABLISHED ON THE GROUND AS OF AUGUST 13, 1969.

NOW OR FORMERLY
NORTHSIDE LUMBER COMPANY
 N 335,527.29
 E 2,537,695.55
 R = 597.96'
 L = 10.77'



NOTE: COORDINATES ARE IN