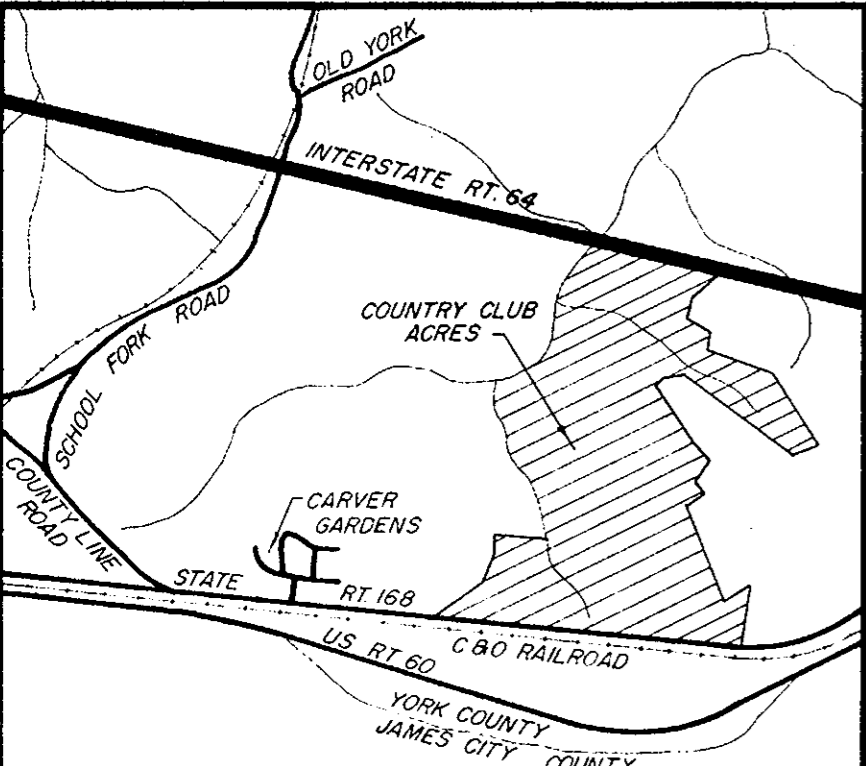


COUNTRY CLUB ACRES

SECTION ONE & TWO
COUNTY OF YORK
VIRGINIA

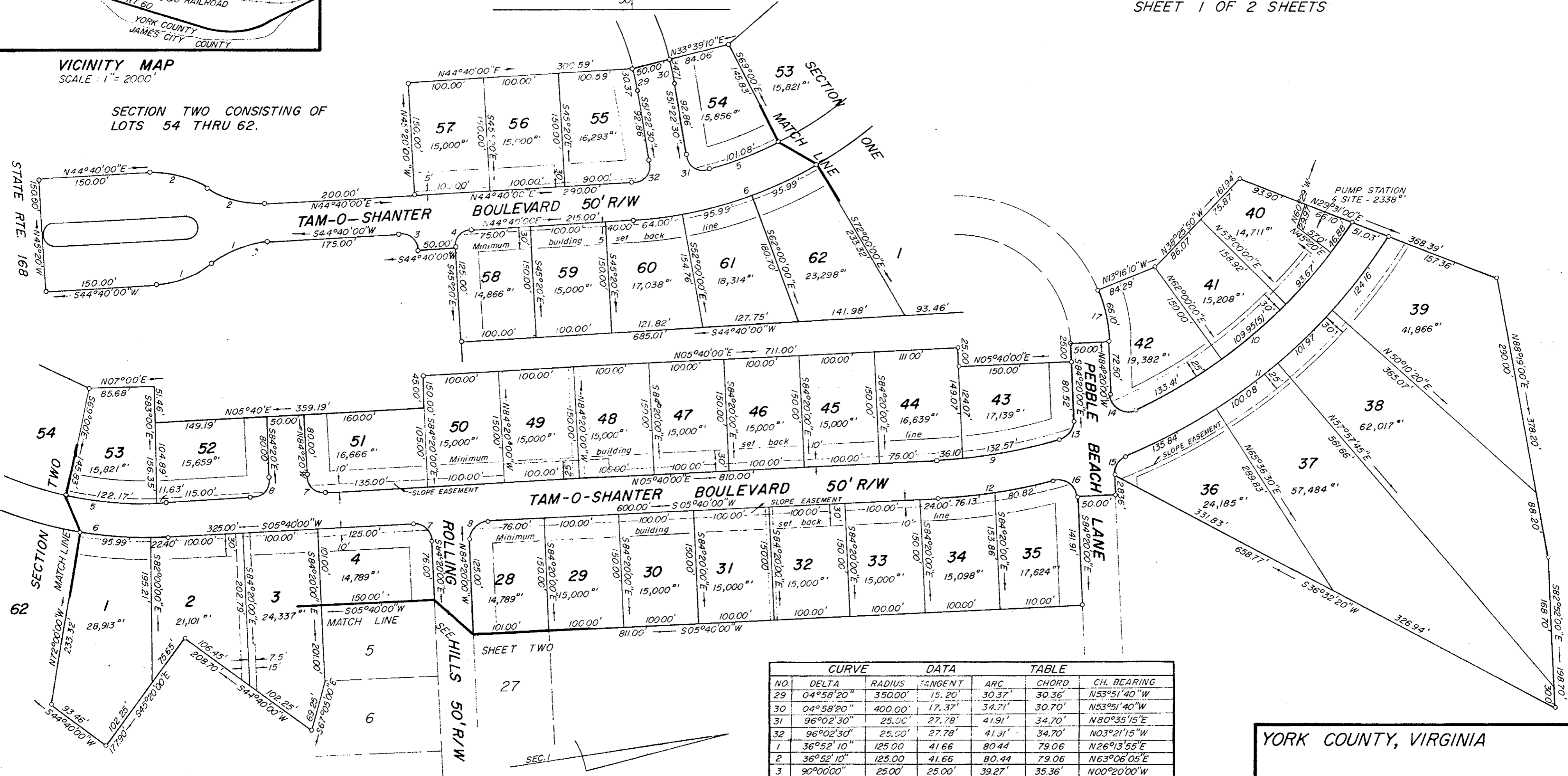
COENEN & ASSOCIATES, ENGINEERS
NEWPORT NEWS, VIRGINIA
SCALE: 1" = 100' DATE: FEB. 25, 1970
SHEET 1 OF 2 SHEETS

DRAINAGE AND UTILITIES EASEMENT SHOWN THUS :
POINTS OF INTERSECTION, UNLESS OTHERWISE NOTED SHOWN THUS :
CONCRETE MONUMENTS SHOWN THUS :
BUILDING SET BACK LINE SHOWN THUS :



VICINITY MAP
SCALE: 1" = 2000'

SECTION TWO CONSISTING OF
LOTS 54 THRU 62.



NO.	DELTA	RADIUS	TANGENT	ARC	CHORD	CH. BEARING
29	04°58'20"	350.00'	15.20'	30.37'	30.36'	N53°51'40"W
30	04°58'20"	400.00'	17.37'	34.71'	30.70'	N53°51'40"W
31	96°02'30"	25.00'	27.78'	41.91'	34.70'	N80°35'15"E
32	96°02'30"	25.00'	27.78'	41.31'	34.70'	N03°21'15"W
1	36°52'10"	125.00'	41.66'	80.44'	79.06'	N26°13'55"E
2	36°52'10"	125.00'	41.66'	80.44'	79.06'	N63°06'05"E
3	90°00'00"	25.00'	25.00'	39.27'	35.36'	N00°20'00"W
4	"	"	"	"	"	N89°40'00"E
5	26°55'00"	500.00'	119.65'	234.89'	232.74'	N19°07'30"E
6	39°00'00"	550.00'	194.77'	374.37'	367.19'	N25°00'00"W
7	90°00'00"	25.00'	25.00'	39.27'	35.36'	N50°40'00"E
8	"	"	"	"	"	N39°20'00"W
9	13°47'57"	700.00'	84.70'	168.59'	168.18'	N01°13'57"W
10	32°13'57"	700.00'	202.29'	393.79'	388.62'	N33°11'48"W
11	35°17'57"	750.00'	283.63'	462.085'	454.79'	N31°39'48"W
12	11°59'24"	750.00'	78.76'	156.95'	156.66'	N00°19'42"W
13	76°12'03"	25.00'	19.60'	33.25'	30.85'	S46°14'00"E
14	112°44'50"	25.00'	37.59'	49.20'	41.63'	N39°17'35"E
15	70°19'10"	25.00'	17.61'	30.68'	28.79'	N49°10'25"W
16	101°59'24"	25.00'	30.87'	44.50'	38.85'	N44°40'18"E
17	18°56'10"	200.00'	23.35'	66.10'	65.80'	S86°11'55"W

COUNTY OF YORK, VIRGINIA, TO WIT
IN THE CLERKS' OFFICE OF THE CIRCUIT COURT
FOR THE COUNTY OF YORK, THIS MAP WAS
PRESENTED AND ADMITTED TO RECORD AS THE
LAW REQUIRES.
DATE 3-2-70 TESTE M. J. [Signature] CLERK
PLAT BOOK 8 PAGE 215-216

YORK COUNTY, VIRGINIA
APPROVED
YORK COUNTY BOARD OF SUPERVISORS
BY William P. [Signature]
PLAT APPROVING AGENT
DATE 2-26-70
VARIATIONS APPROVED
DATE _____