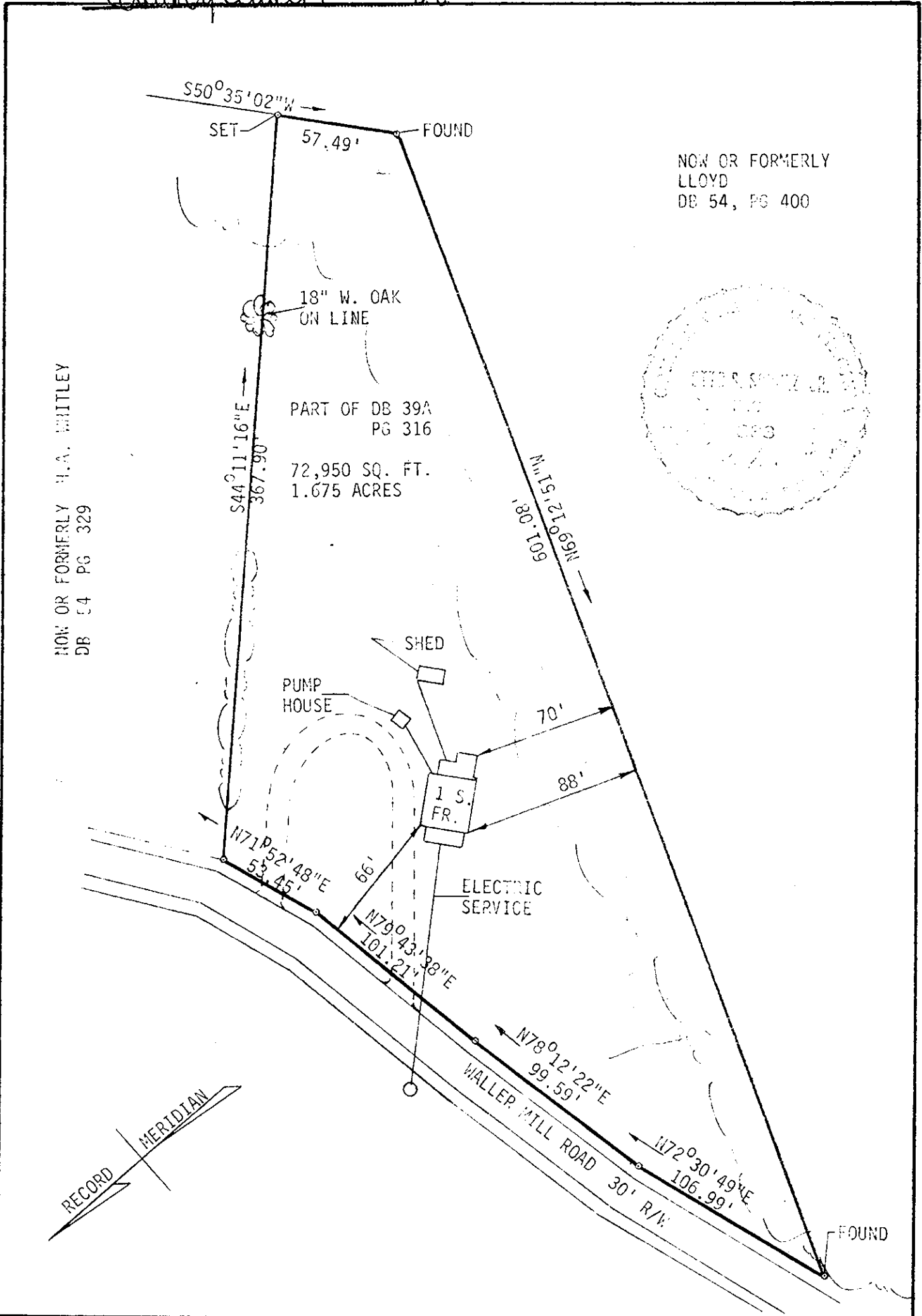


Teste:

Edith M. Whitley
 MELVILLE A. BRYANT, Clerk

D.C.



NOW OR FORMERLY H.A. WHITLEY
 DB 54 PG 329

NOW OR FORMERLY
 LLOYD
 DB 54, PG 400



L.V. WOODSON & ASSOCIATES, ENGINEERS & SURVEYORS, P.O. BOX 633 WILLIAMSBURG, VIRGINIA 23185

LEGEND: ○=IP=IRON PIN, □=MON=MONUMENT, —=PROPERTY LINE, - - -=CENTERLINE, - - - -=EASEMENT LINE

A SURVEY OF PART OF THE MARTHA S. HENDERSON TRACT & IMPROVEMENTS
 LYING IN BRUTON DISTRICT, YORK COUNTY, VIRGINIA

SCALE 1"=60' REF: NOTED CLOSURE 1/9M DATE: NOVEMBER 20, 1969 AREA 1.675 ACRES