

NOTES

BEARINGS AND DISTANCES SHOWN IN PARENTHESES () ARE FROM PLAT DATED 5-17-24 RECORDED IN P.B. 3 PG. 6 ; NOT SURVEYED.

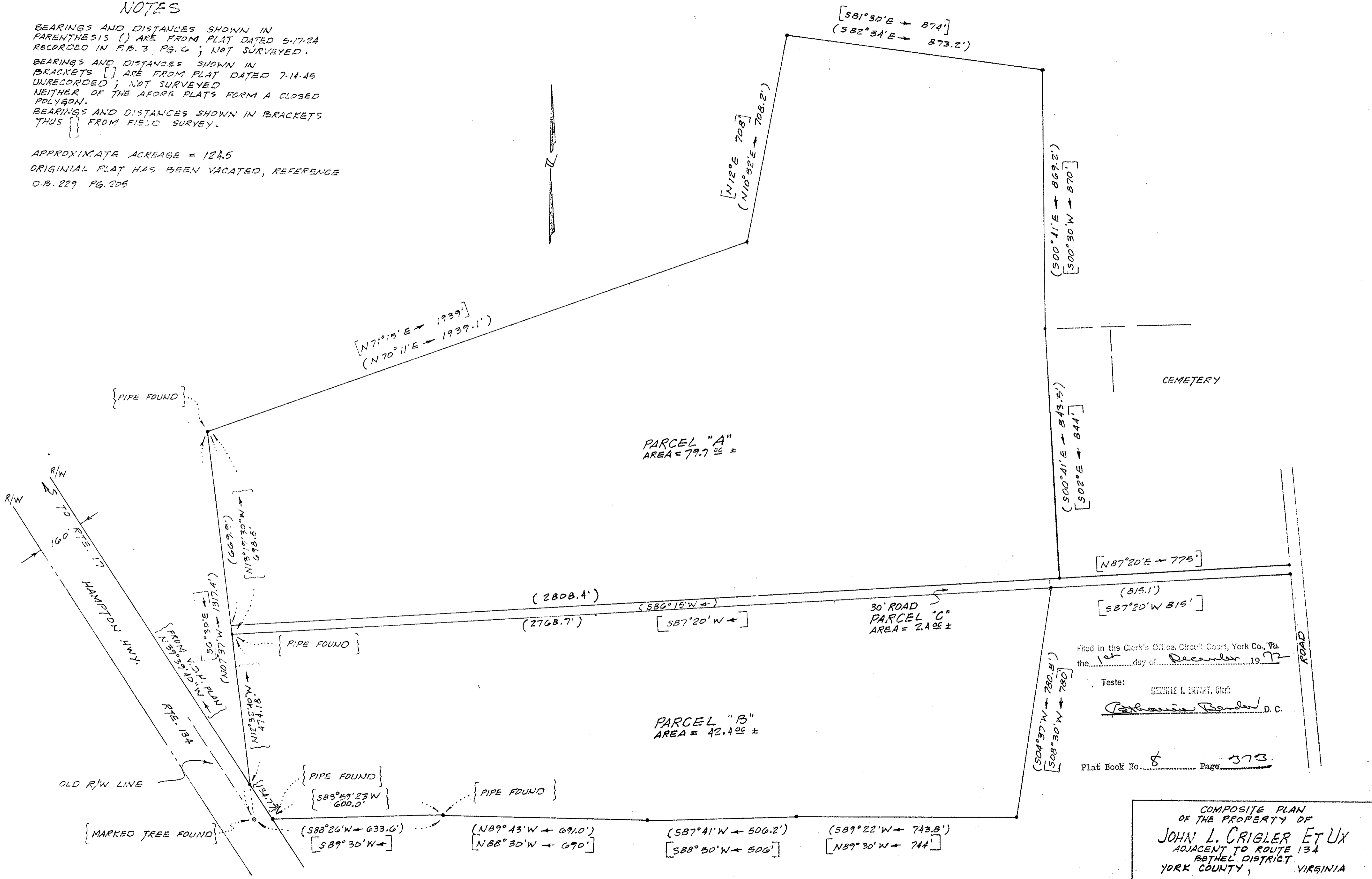
BEARINGS AND DISTANCES SHOWN IN BRACKETS [] ARE FROM PLAT DATED 7-11-45 UNRECORDED ; NOT SURVEYED NEITHER OF THE AFORE PLATS FORM A CLOSED POLYGON.

BEARINGS AND DISTANCES SHOWN IN BRACKETS THUS [] FROM FIELD SURVEY.

APPROXIMATE ACREAGE = 124.5

ORIGINAL PLAT HAS BEEN VACATED, REFERENCE

O.B. 229 PG. 205



Filed in the Clerk's Office, Circuit Court, York Co., Va.
the 1st day of December 1972

Teste:
HELEN I. DRYANT, Clerk
Patricia Bender D.C.

Plat Book No. 8 Page 373

COMPOSITE PLAN
OF THE PROPERTY OF
JOHN L. CRIGLER ET UX
ADJACENT TO ROUTE 134
BETHEL DISTRICT
YORK COUNTY, VIRGINIA

REVISED 11-29-72
DELETE INTERIOR LOT LINES.
ADD PARCEL A, B & C NOTES.

JOHN N. RUTH ... CERTIFIED LAND SURVEYOR
HAMPTON, VA.

Scale: 1" = 200' Date: Sept. 2, 1972