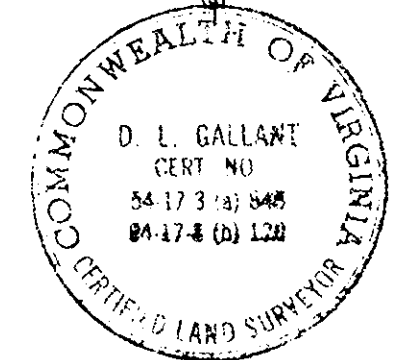
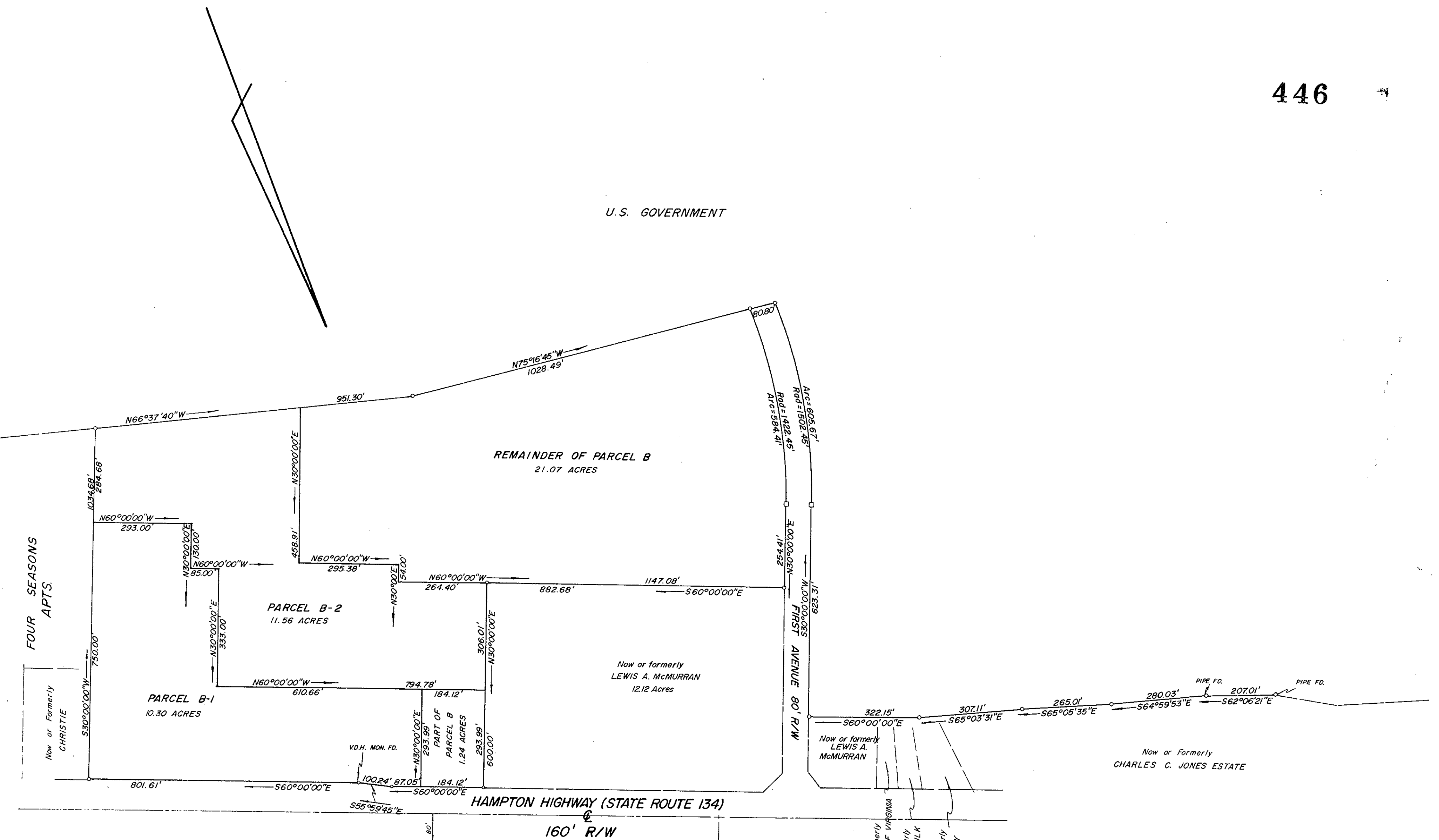


U.S. GOVERNMENT



I certify that this survey is correct to the best of my knowledge and belief subject to easements, servitudes, and covenants of record.

*D. L. Gallant*  
D. L. GALLANT  
Certified Land Surveyor

Filed in the Clerk's Office, Circuit Court, York Co., Va.  
the 21<sup>st</sup> day of Dec 1973

Tests:  
Melville I. Bryant, Clerk  
*Melville I. Bryant*  
D.C.  
D.B. # 262 p. 456

PLAT SHOWING  
PARCELS B-1 & B-2  
PART OF SHADY BANKS FARM  
YORK COUNTY, VIRGINIA

COENEN & ASSOCIATES  
ENGINEERS - PLANNERS - SURVEYORS  
696 J. CLYDE MORRIS BLVD. - NEWPORT NEWS, VA.  
SCALE 1" = 200' DATE: SEPT. 6, 1973  
Revised: Nov. 21, 1973