

Filed in the Clerk's Office, Circuit Court, York Co., Va.  
the 14th day of June 1974

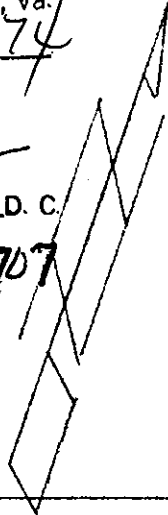
488

Teste:

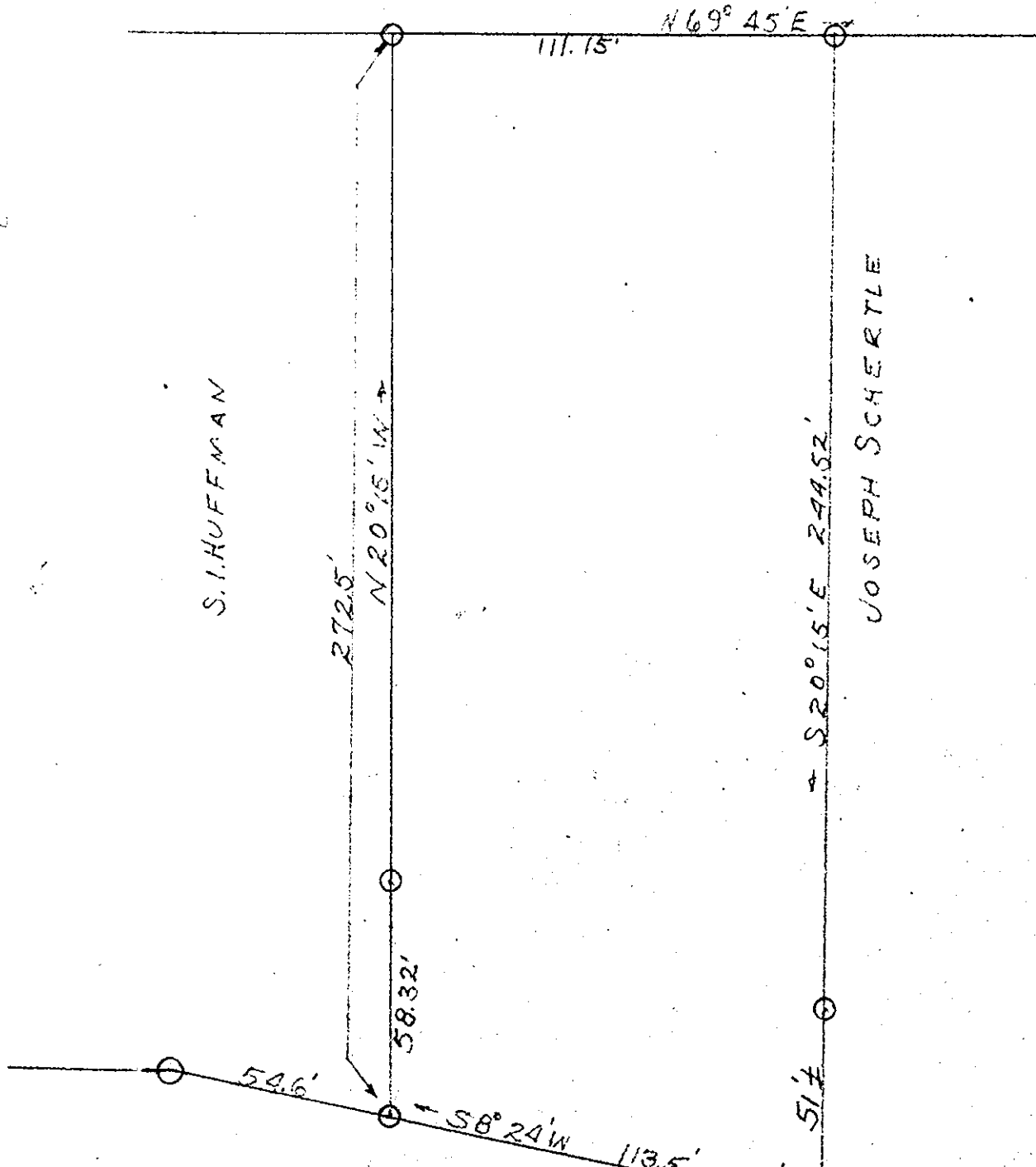
MELVILLE I. BRYANT, Clerk

*Edith W. Ellwood* D.C.

Need Book # 262. p. 707



RAILROAD RD. 30'



Plot plan of part of the property of George Lee in Grafton Mag. District York County Va. as shown. Property lines are as shown and there are no encroachments.

*Ralph D. Witt*

Ralph D. Witt P.S. Va. 2812

Scale 1"=40'

September 1971