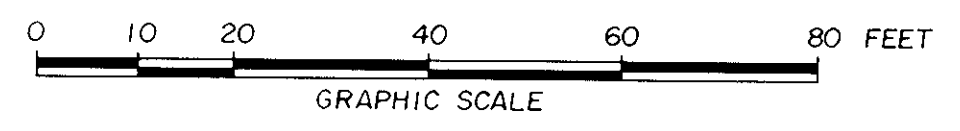
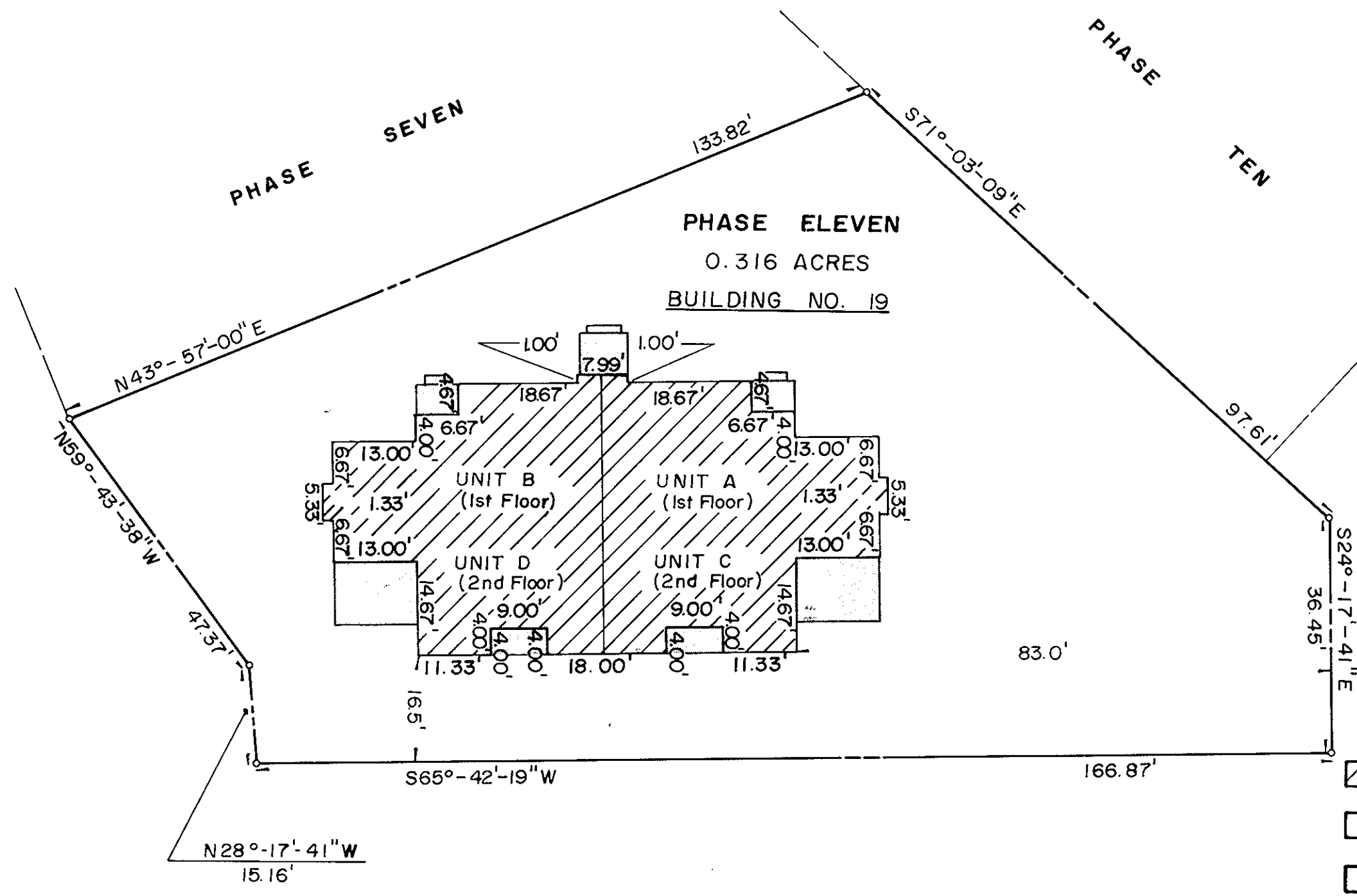
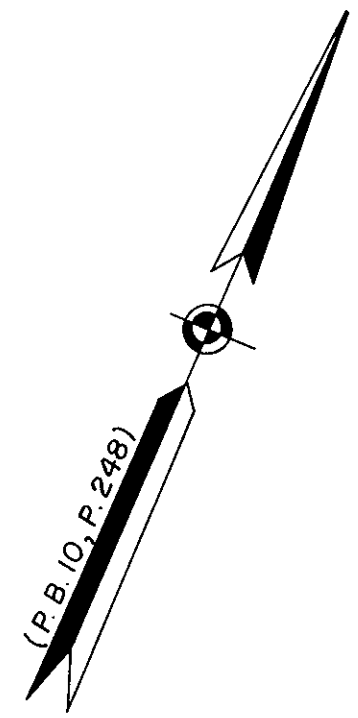
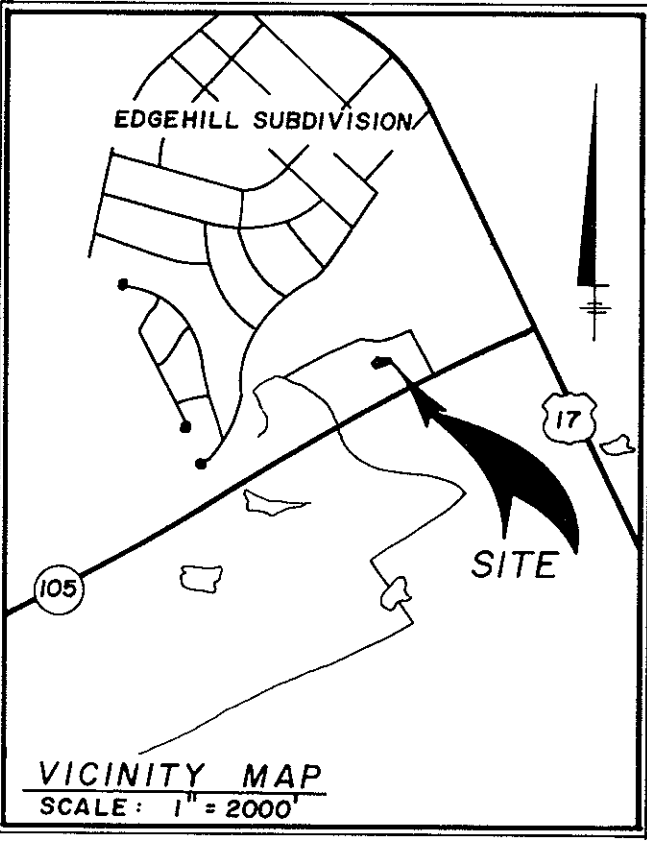


SHEET 2 OF 2  
**BURNT BRIDGE RUN CONDOMINIUMS**  
 PHASE ELEVEN  
 GRAFTON DISTRICT COUNTY OF YORK, VIRGINIA  
 SCALE: 1" = 20' JANUARY, 1989



**THE SIRINE GROUP, LTD.**  
 SURVEYORS • ENGINEERS • PLANNERS  
 P.O. BOX 450, ROUTE 17  
 WHITE MARSH, VIRGINIA  
 23183



- NOTES:
1. ALL BUILDING DIMENSIONS SHOWN HEREON ARE EXTERIOR DIMENSIONS AND ARE IN FEET.
  2. THE DESIGNATION OF FEE TITLE AREA IS SUPERSEDED BY THE DECLARATION AND IS NOT INTENDED TO IMPLY THAT EXTERIOR WALLS, BEARING WALLS AND OTHER COMMON ELEMENTS ARE FEE TITLE AREA.
  3. I CERTIFY THAT THIS PLAT COMPLIES WITH THE PROVISIONS OF SUBSECTION (a) OF § 55-79.58 OF THE CONDOMINIUM ACT AND THAT ALL UNITS DEPICTED HEREON HAVE BEEN SUBSTANTIALLY COMPLETED.

SIGNED: C. E. Newbaker III  
 C. E. NEWBAKER III



- LEGEND
- FEE TITLE AREA
  - COMMON ELEMENTS
  - LIMITED COMMON ELEMENTS
  - LIMIT OF AREA OR ELEMENTS
- UNITS A AND B ARE UNIT TYPE ④  
 UNITS C AND D ARE UNIT TYPE ⑤

Plat Book No. 11, Page 12  
 EDITH M. ELLIOTT, CLERK  
 Filed in the Clerk's Office, County of York, Virginia  
 this 10th day of February, 1989  
 Teste:  
 Carol D. Roselmuir, DC  
 10:21 A.M.