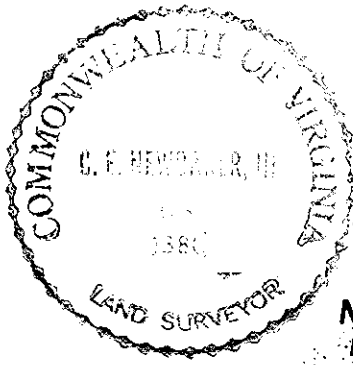


THE UNDERSIGNED CERTIFIES THAT THIS PLAT IS ACCURATE AND COMPLIES WITH THE PROVISIONS OF THE CODE OF VIRGINIA SECTION 55-79.58 (b) AND ALL UNITS DEPICTED HEREON HAVE BEEN SUBSTANTIALLY COMPLETED.

SIGNED: *C. E. Newbaker III* DATE: 11-21-88
 C. E. NEWBAKER III, L.S.



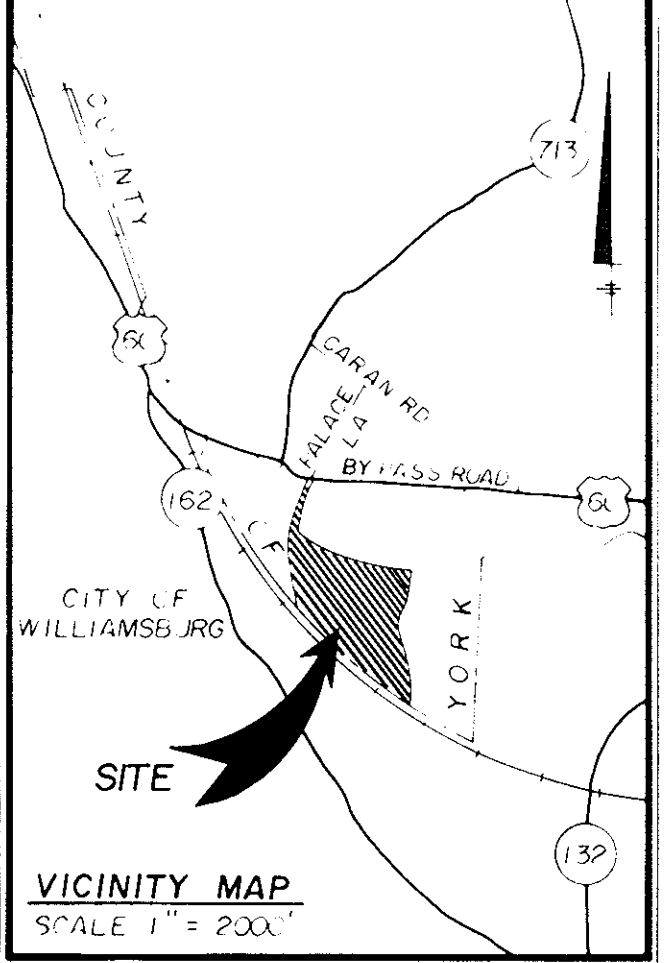
NOTES:
 I. ALL BUILDING DIMENSIONS SHOWN HEREON ARE EXTERIOR DIMENSIONS AND ARE IN FEET.
 PARCEL B = 17.630 ACRES

STATE OF VIRGINIA
 COUNTY OF YORK

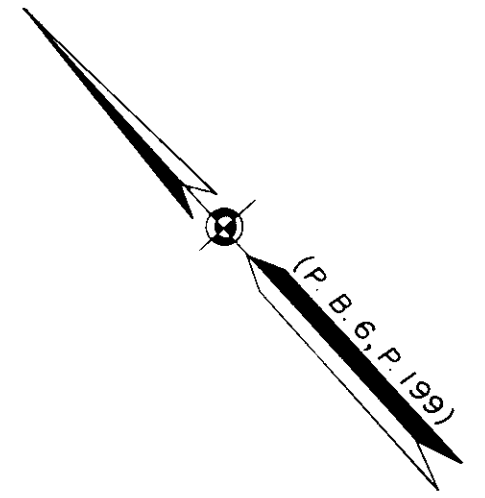
IN THE CLERK'S OFFICE OF THE CIRCUIT COURT FOR THE COUNTY OF YORK THE 10th DAY OF March, 1988 THIS MAP WAS PRESENTED AND ADMITTED TO RECORD AS THE LAW DIRECTS IN PLAT BOOK 11, PAGE 27

TESTE: EDITH M. ELLIOTT, CLERK

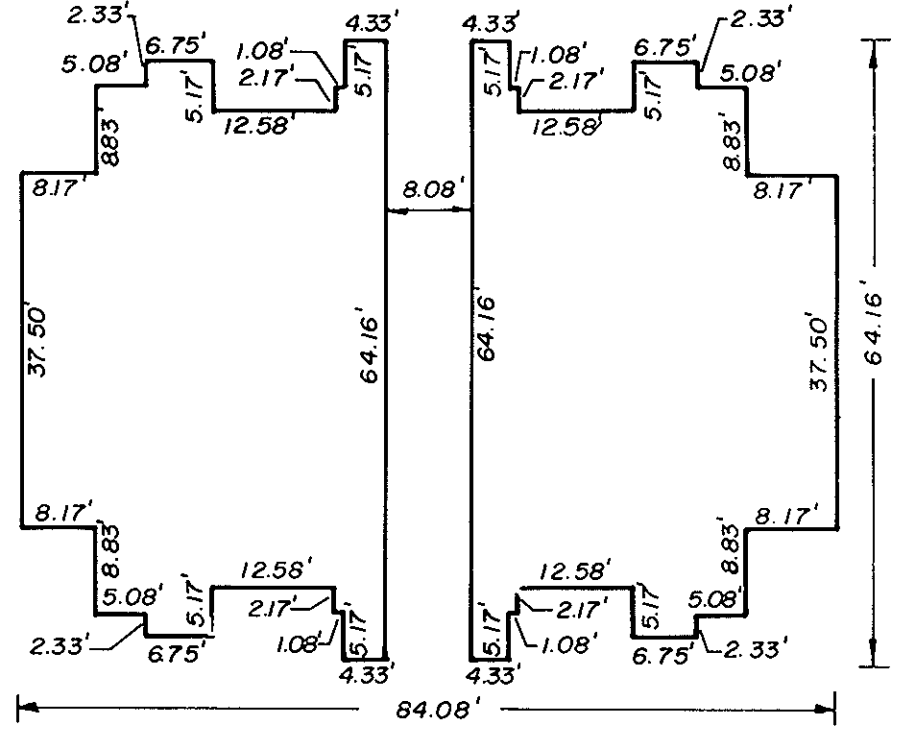
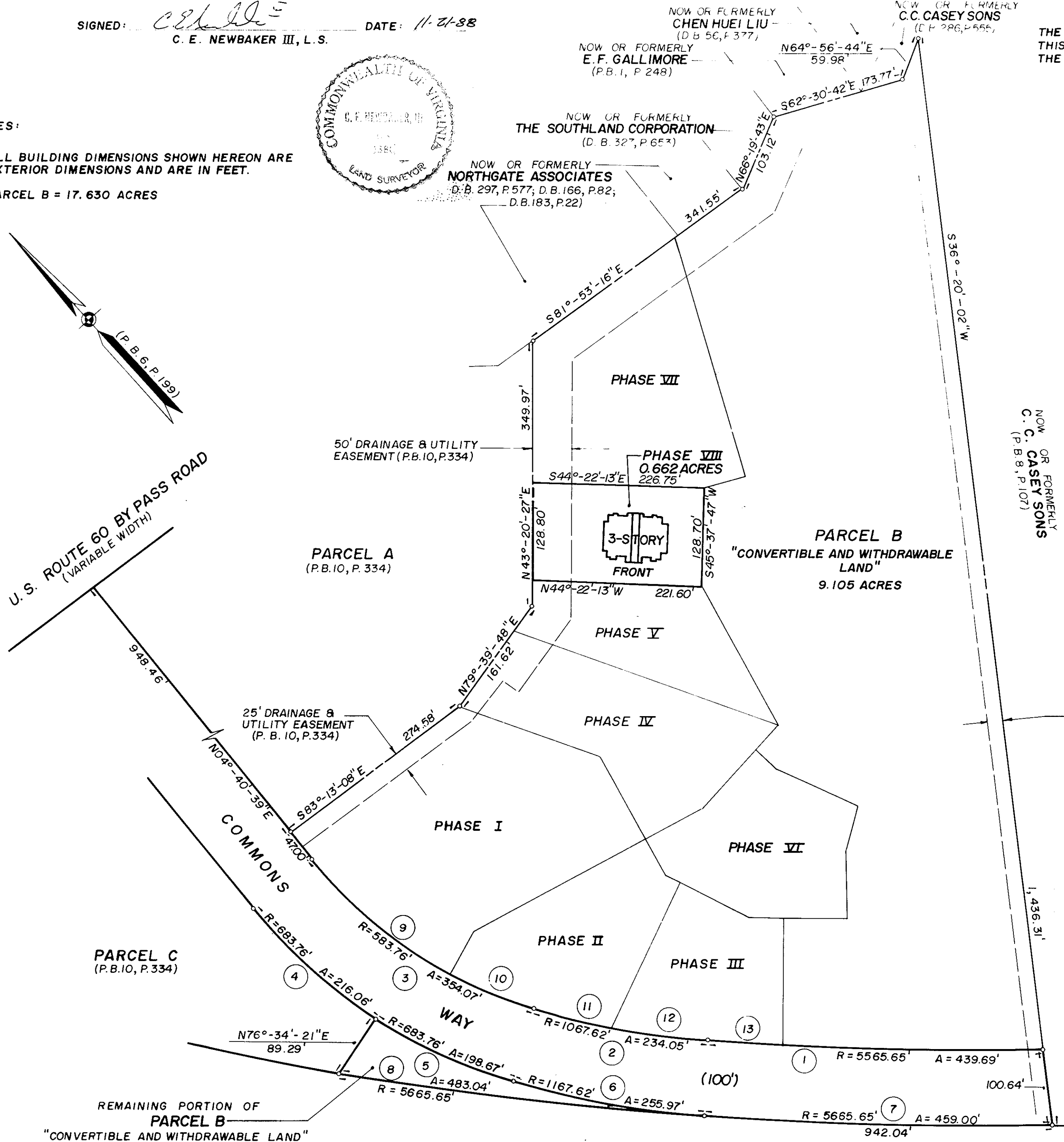
BY: *Carol D. Spaulmer, D.C.*



CURVE DATA TABLE			
NO.	RADIUS	DELTA	TANGENT
1	5565.65'	04°-31'-35"	219.96'
2	1067.62'	12°-33'-39"	117.50'
3	583.76'	34°-45'-06"	182.67'
4	683.76'	18°-06'-16"	108.94'
5	683.76'	16°-38'-48"	100.03'
6	1167.62'	12°-33'-39"	128.50'
7	5665.65'	04°-38'-30"	229.62'
8	5665.65'	04°-53'-06"	241.67'
9	583.76'	22°-51'-55"	118.05'
10	583.76'	11°-53'-11"	60.77'
11	1067.62'	05°-32'-25"	51.66'
12	1067.62'	07°-01'-14"	65.49'
13	5565.65'	00°-55'-36"	45.00'



U.S. ROUTE 60 BY PASS ROAD
 (VARIABLE WIDTH)



BUILDING 15
 N.T.S.

J. Mark Carter
 November 23, 1988

EXHIBIT I
 PHASE VIII
 SHEET 1 OF 5
 PLAT OF
WILLIAMSBURG COMMONS CONDOMINIUMS
 FOR
WILLIAMSBURG COMMONS, INC.
 A VIRGINIA CORPORATION
 BRUTON DISTRICT COUNTY OF YORK, VIRGINIA
 SCALE: 1" = 100' NOVEMBER 16, 1988

0 50 100 200 300 400 FEET
 GRAPHIC SCALE

THE SIRINE GROUP, LTD.
 SURVEYORS • ENGINEERS • PLANNERS
 P.O. BOX 450, ROUTE 17
 WHITE MARSH, VIRGINIA
 23183

CHESAPEAKE AND OHIO RAILROAD