

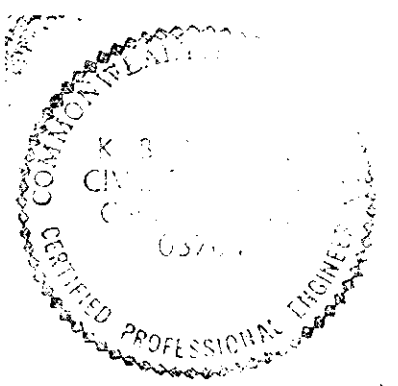
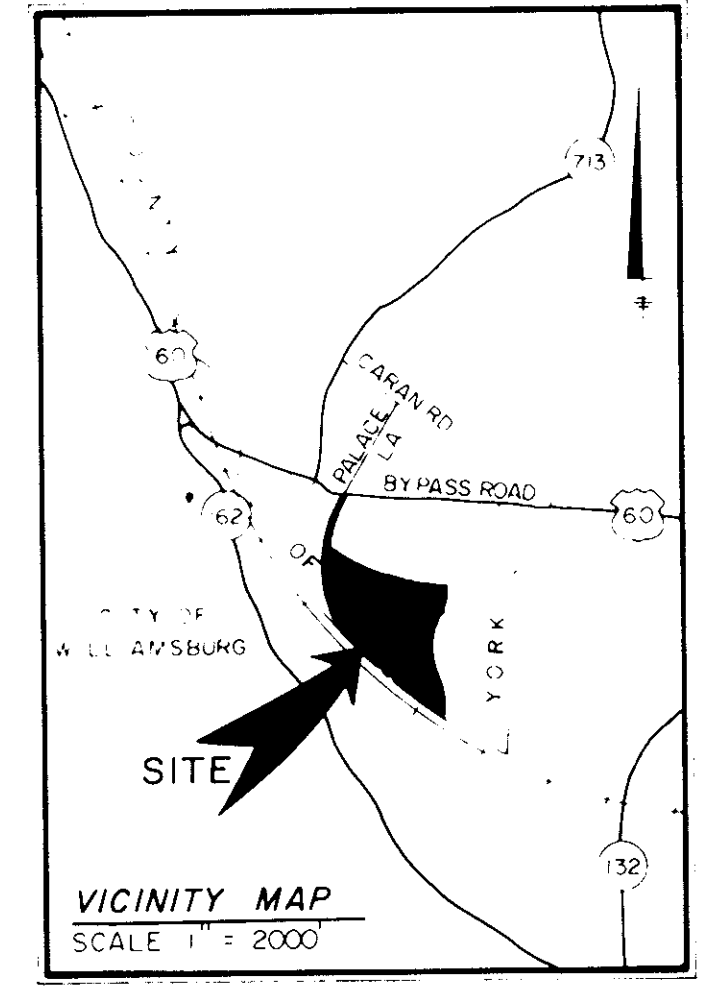
THE UNDERSIGNED CERTIFIES THAT THIS PLAN IS ACCURATE AND COMPLIES WITH THE PROVISIONS OF THE CODE OF VIRGINIA SECTION 55-79.58 (b) AND ALL UNITS DEPICTED HEREON HAVE BEEN SUBSTANTIALLY COMPLETED.

NOTES
 1. ALL BUILDING DIMENSIONS SHOWN HEREON ARE EXTERIOR DIMENSIONS AND ARE IN FEET.

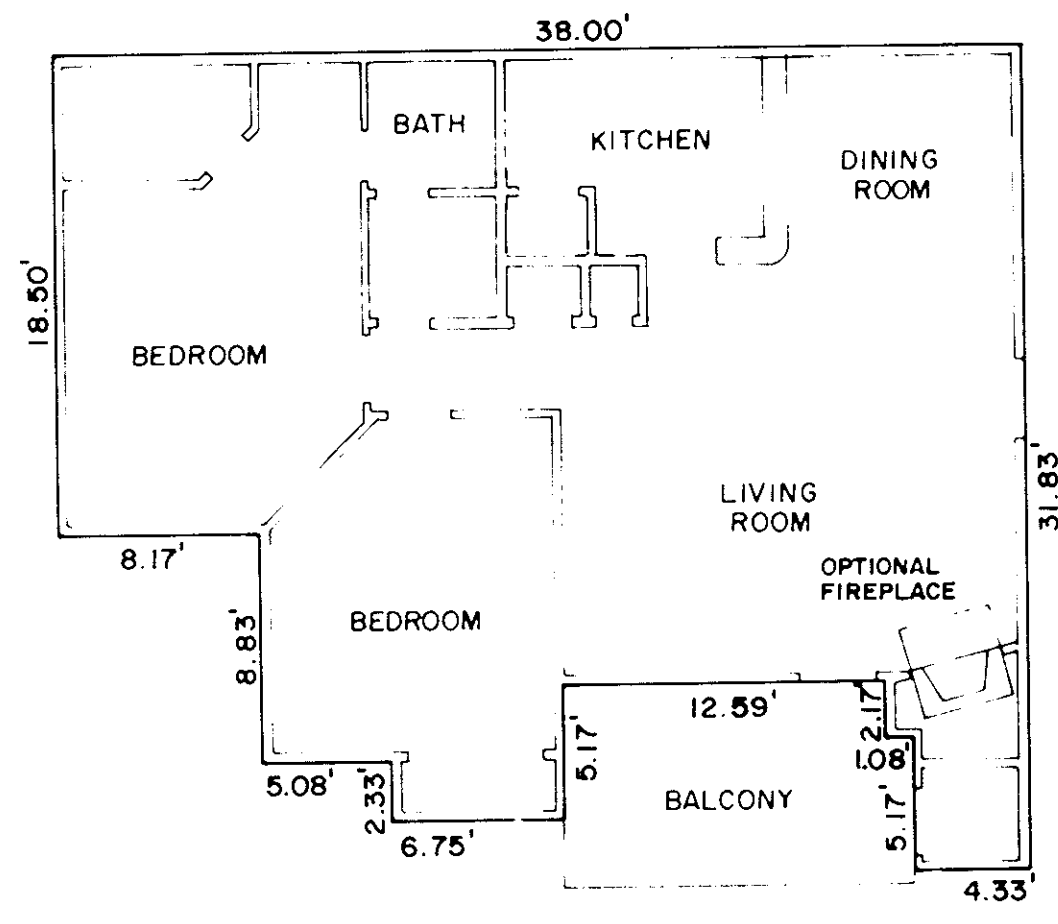
STATE OF VIRGINIA
 COUNTY OF YORK

IN THE CLERK'S OFFICE OF THE CIRCUIT COURT FOR THE COUNTY OF YORK THE 11th DAY OF March, 1989 THIS MAP WAS PRESENTED AND ADMITTED TO RECORD AS THE LAW DIRECTS IN PLAT BOOK 11, PAGE 28

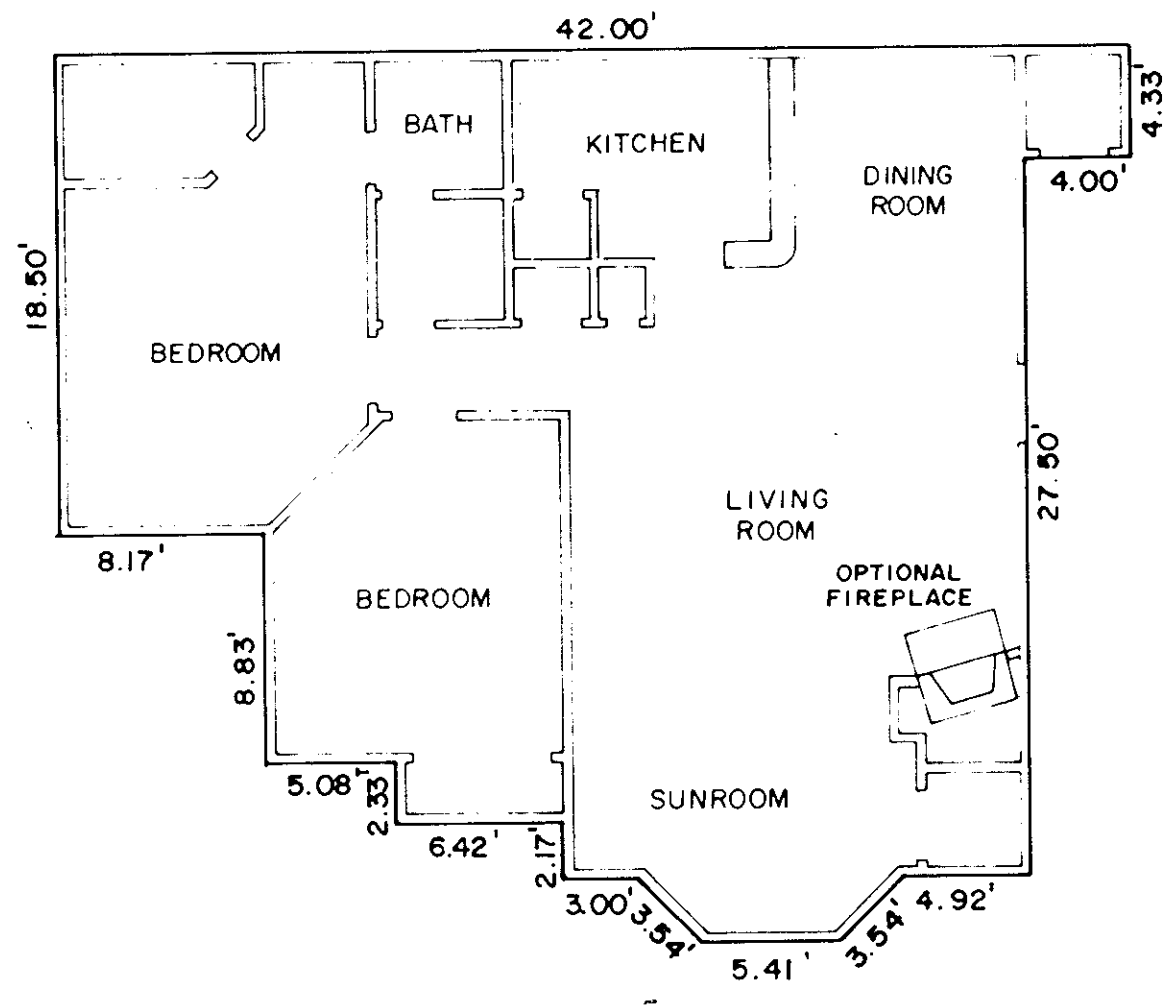
EDITH M. ELLIOTT, CLERK
 TESTE: _____ CLERK
 BY: Carl Rossmann, D.C.



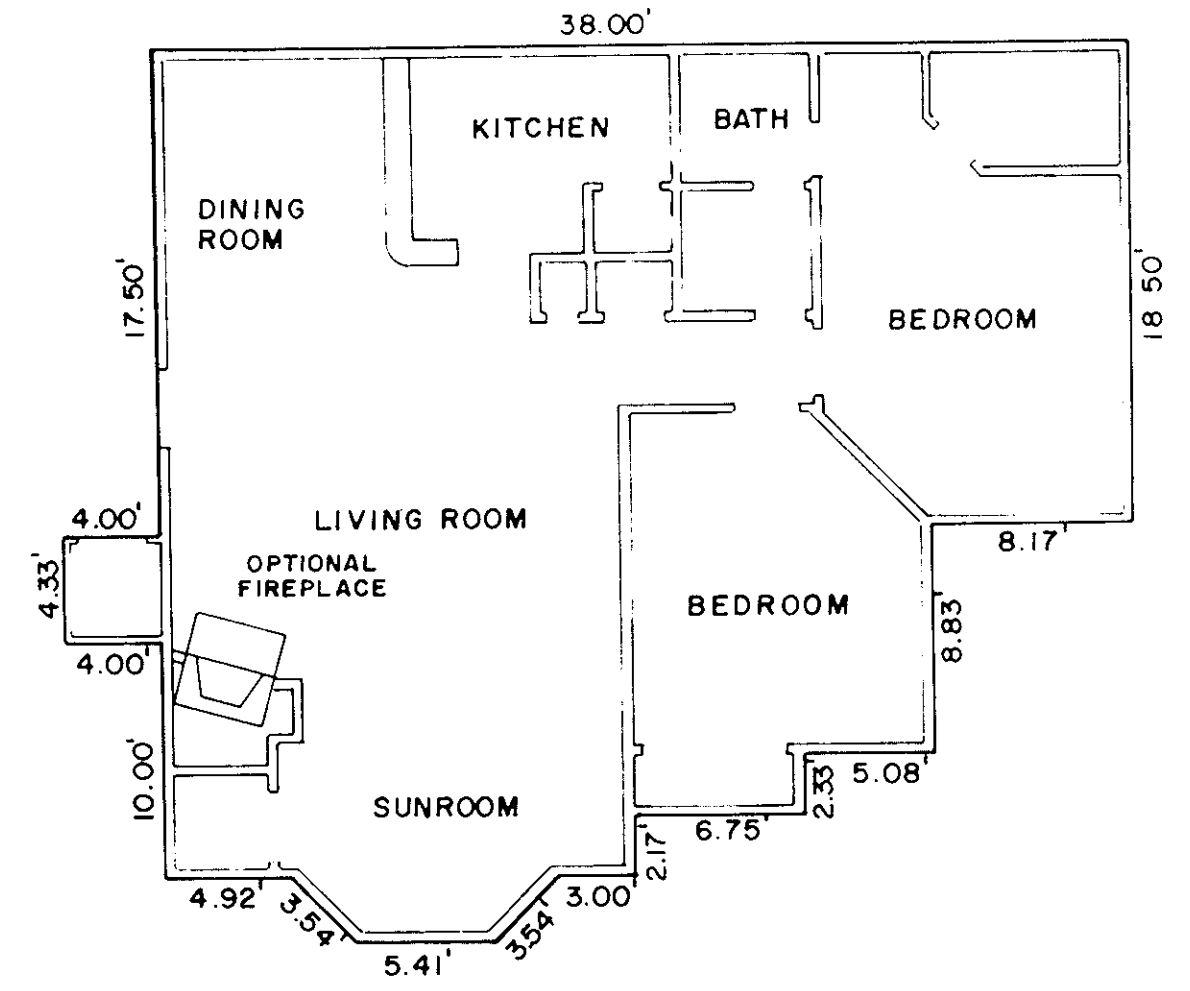
SIGNED: Kenton B. Patrick DATE: 4/24/88
 KENTON B. PATRICK, P. E.



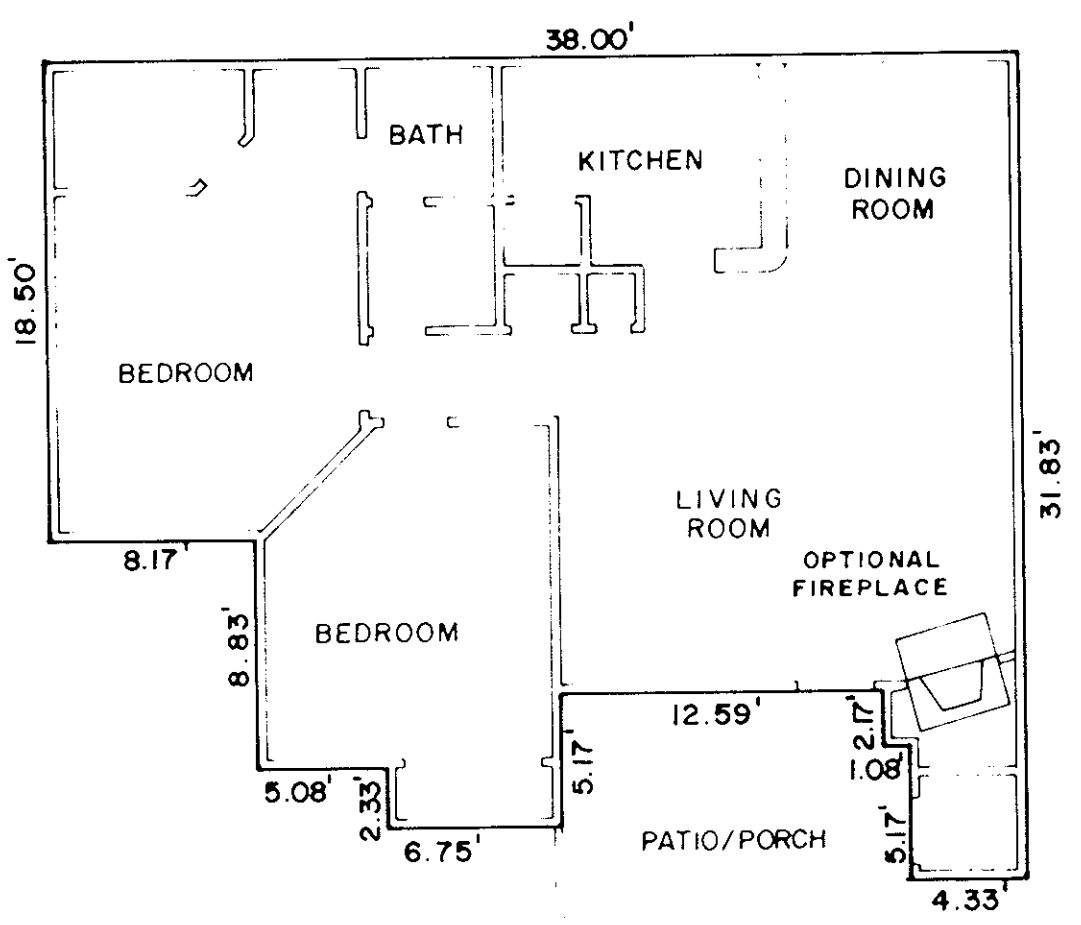
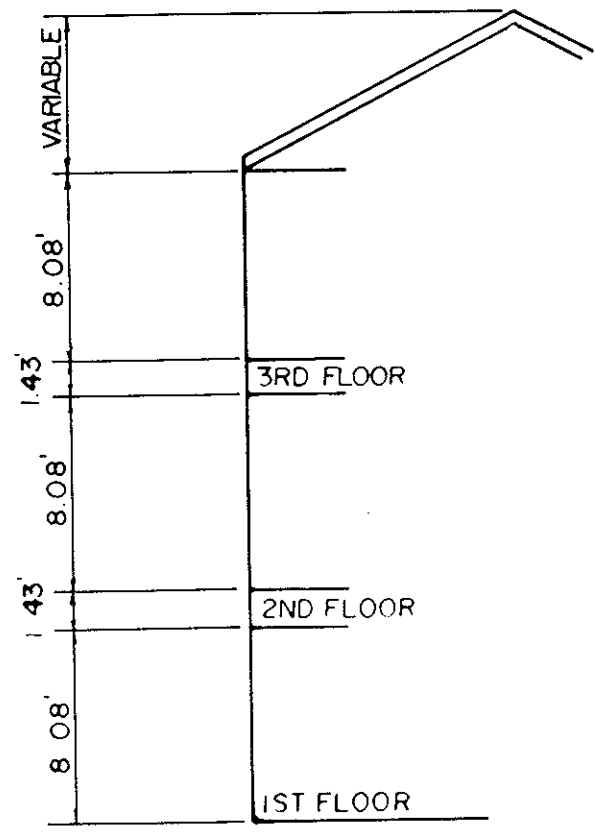
MODEL E - TYPICAL UNITS E, F, G & H
 2ND FLOOR



MODEL E - TYPICAL UNITS I, J
 3RD FLOOR
 W/ SUNROOM



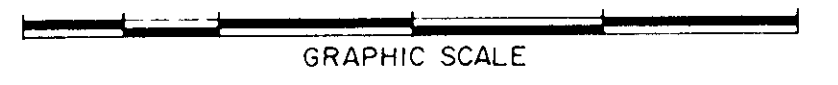
MODEL E - TYPICAL UNITS K, L
 3RD FLOOR
 W/ SUNROOM



MODEL E - TYPICAL UNITS A, B, C & D
 1ST FLOOR

EXHIBIT I
 PHASE VIII
 SHEET 2 OF 5
 PLAT OF
 WILLIAMSBURG COMMONS CONDOMINIUMS

FOR
 WILLIAMSBURG COMMONS, INC.,
 A VIRGINIA CORPORATION
 BRUTON DISTRICT COUNTY OF YORK, VIRGINIA
 SCALE 1/8" = 1'-0" NOVEMBER 16, 1988



THE SIRINE GROUP, LTD.
 SURVEYORS • ENGINEERS • PLANNERS
 P.O. BOX 450, ROUTE 17
 WHITE MARSH, VIRGINIA
 23183