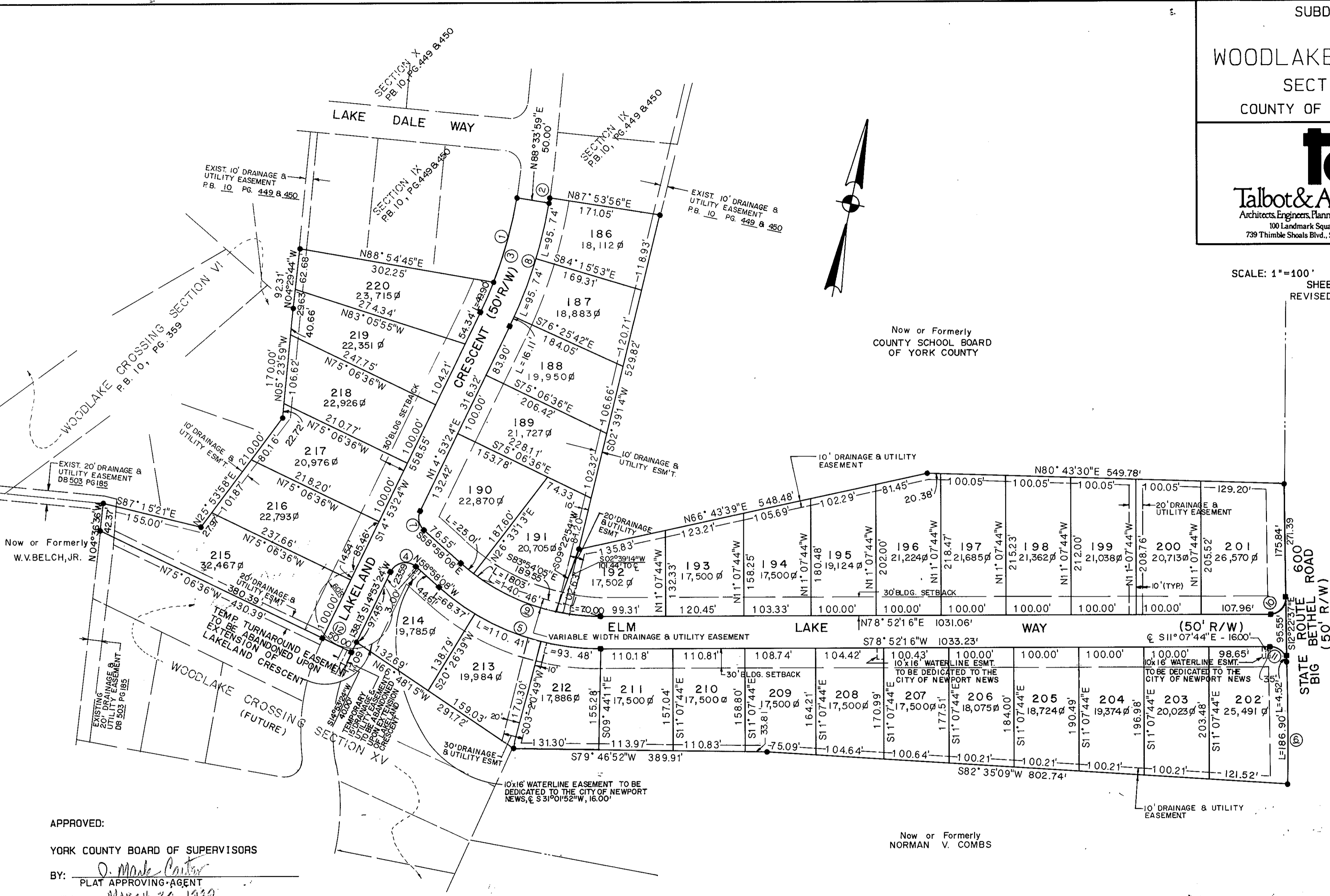


SUBDIVISION  
OF  
**WOODLAKE CROSSING**  
SECTION XIV  
COUNTY OF YORK, VIRGINIA

**ta**  
**Talbot & Associates, Ltd.**  
Architects, Engineers, Planners, Surveyors, Landscape Architects  
100 Landmark Square, Virginia Beach, Va. 23452  
739 Thimble Shoals Blvd., Suite 1006, Newport News, Va. 23606

SCALE: 1"=100'      OCTOBER 3, 1988  
SHEET 2 OF 2  
REVISED: 2/3/89



APPROVED:  
YORK COUNTY BOARD OF SUPERVISORS  
BY: *D. Mark Carter*  
PLAT APPROVING AGENT  
DATE: MARCH 20, 1989

STATE OF VIRGINIA  
COUNTY OF YORK  
IN THE CLERK'S OFFICE OF THE CIRCUIT  
COURT FOR THE COUNTY OF YORK THE 21<sup>st</sup>  
DAY OF March, 1989 THIS MAP WAS  
PRESENTED AND ADMITTED TO RECORD AS THE  
LAW DIRECTS IN PLAT BOOK 11, PAGE 41

TESTE: EDITH M. ELLIOTT, CLERK  
BY: *Carol Drosselmaier, D.C.*  
9:29 A.M.

■ MONUMENTS  
● IRON PIPE