

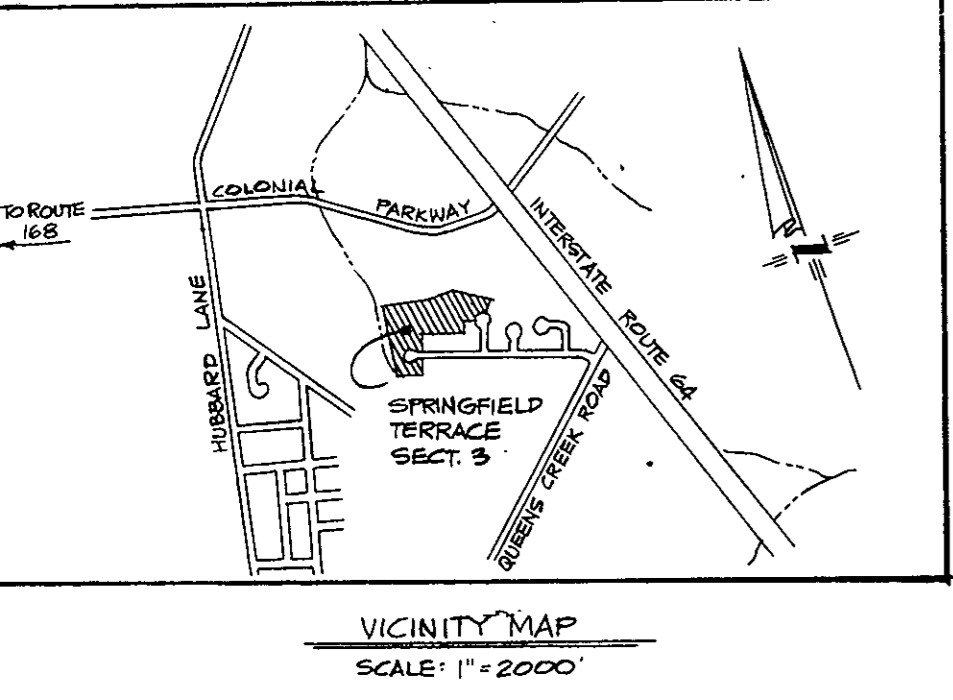
44

SUBDIVISION PLAT
SECTION THREE
SPRINGFIELD TERRACE

SPRING LAND CORP., OWNERS + DEVELOPERS
BEING LOCATED AT THE END OF
HICKORY HILLS DRIVE + SPRINGFIELD DRIVE
BRUTON DISTRICT - YORK COUNTY - VIRGINIA
SCALE: 1" = 100' JULY 27, 1987

S.J. GLASS + ASSOCIATES
ENGINEERING SERVICES
P.O. BOX 1226 HAMPTON, VIRGINIA 23661

REV. FEBRUARY 1, 1989



THE PLATTING OF THE LAND HEREON SHOWN IS WITH THE FREE CONSENT AND IN ACCORDANCE WITH THE DESIRES OF THE UNDERSIGNED OWNERS AND PROPRIETORS. SPRING LAND CORPORATION, A VIRGINIA CORPORATION

R. N. Hodges
R. N. HODGES PRESIDENT

T. R. Hall
T. R. HALL SECRETARY TREASURER

I, Nancy H. Hinson, A NOTARY PUBLIC IN AND FOR THE CITY OF NEWPORT NEWS, VIRGINIA DO HEREBY CERTIFY THAT THE ABOVE NAMED PERSONS WHOSE NAMES ARE SIGNED TO THE FOREGOING WRITING HAVE ACKNOWLEDGED THE SAME BEFORE ME IN MY CITY AND STATE AFORESAID.

GIVEN UNDER MY HAND THIS 5TH DAY OF January, 1989.

Nancy H. Hinson
NOTARY PUBLIC

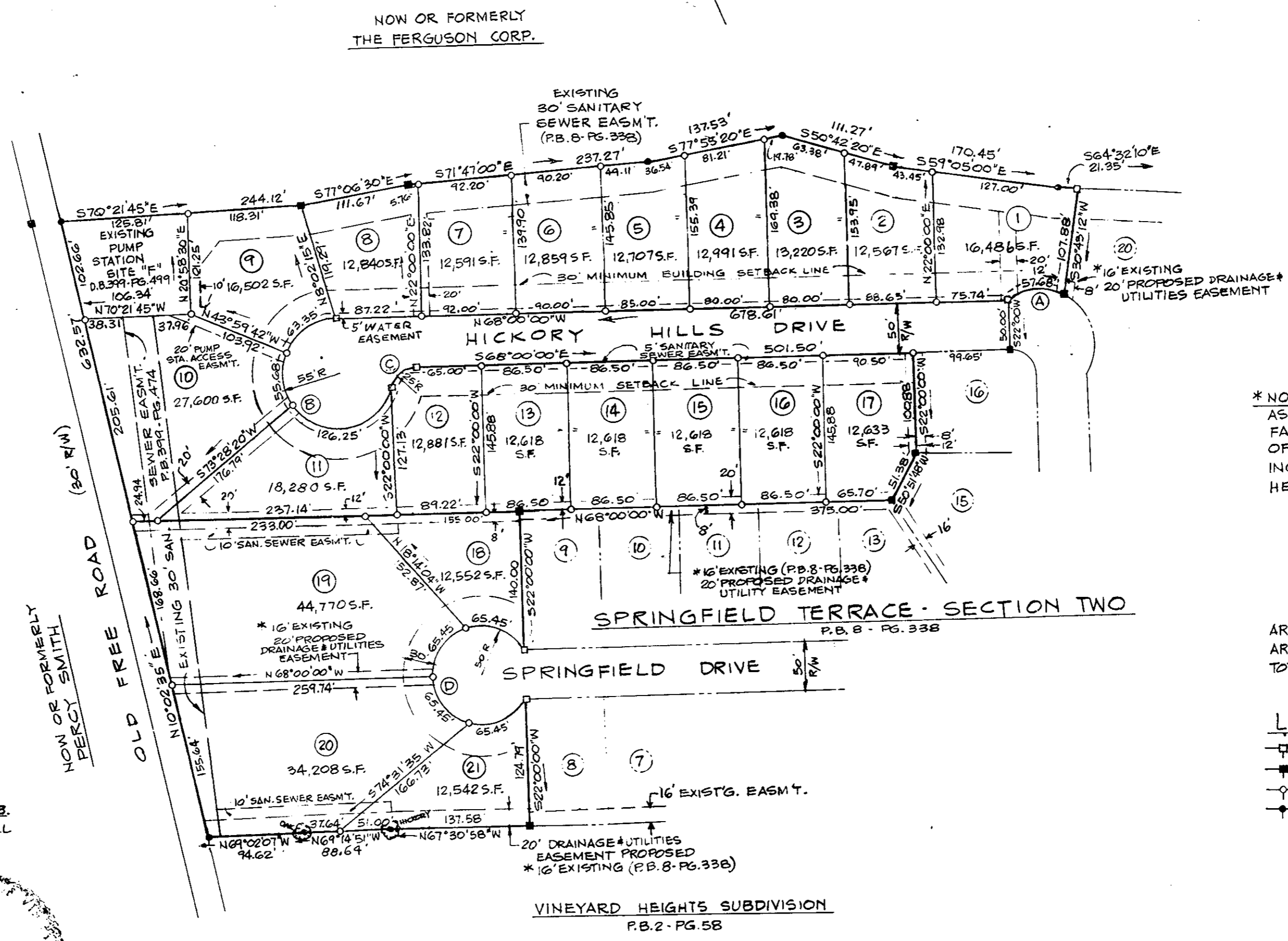
MY COMMISSION EXPIRES ON THE 13TH DAY OF NOV, 1989.

TO THE BEST OF MY KNOWLEDGE AND BELIEF, ALL THE REQUIREMENTS AS SET FORTH IN THE ORDINANCE FOR APPROVING PLATS OF SUBDIVISIONS IN THE COUNTY OF YORK, VIRGINIA, HAVE BEEN COMPLIED WITH, INCLUDING A CLOSURE OF NOT LESS THAN 1"/10,000'. THIS IS TO CERTIFY THAT THE LAND EMBRACED IN THIS SUBDIVISION IS IN THE NAME OF SPRING LAND CORP. AND WAS ACQUIRED FROM EZEKIEL & ETTA T. LEE, BY DEED DATED JULY 6, 1965, AND DULY RECORDED IN THE CLERK'S OFFICE OF THE CIRCUIT COURT OF THE COUNTY OF YORK, VIRGINIA, IN DEED BOOK 787, PAGE 238.

* I CERTIFY THAT MONUMENTS AS SHOWN ON THE PLAT WILL BE SET ON OR BEFORE JULY 1, 1990.

S. Johnston Glass
S. JOHNSTON GLASS, C.L.S.

UTILITIES NOTES:
WATER: EACH LOT WITHIN THIS SUBDIVISION IS SERVED BY PUBLIC WATER PROVIDED BY NEWPORT NEWS WATERWORKS AND METERED THROUGH COMMONWEALTH WATER AND SEWER, INC., A VIRGINIA CORPORATION.
SEWER: EACH LOT WITHIN THIS SUBDIVISION IS SERVED BY PUBLIC SEWER PROVIDED BY YORK COUNTY.



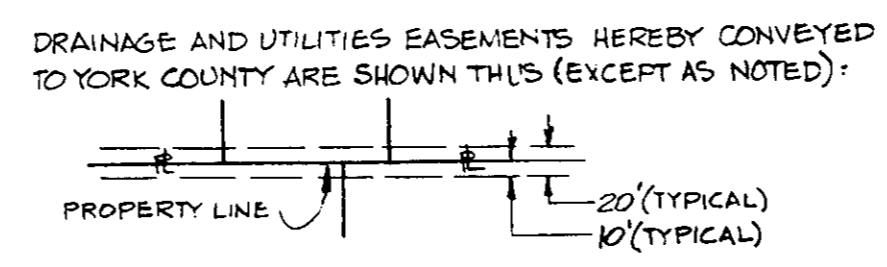
* NOTE: ALL PREVIOUS EASEMENTS AS SHOWN IN P.B. 8-PG. 338 WHICH FALL WITHIN THE BOUNDARIES OF THIS SUBDIVISION SHALL BE INCREASED IN WIDTH AS SHOWN HEREON.

AREA WITHIN LOTS = 8.005 AC. ±
AREA WITHIN R/W = 1.033 AC. ±
TOTAL SUBDIVIDED AREA = 9.038 AC. ±

LEGEND:
 □ MONUMENTS SET *
 ■ MONUMENTS FOUND
 ○ IRON PIPES SET *
 ● IRON PIPES FOUND

CURVE DATA TABLE

NO.	DELTA	RADIUS	TANGENT	ARC	CHORD	CHD. BEARING
A	61°41'11"	53.58'	31.99'	57.68'	54.94'	N73°36'48"W
B	255°31'21"	55.00'	—	245.28'	—	—
C	75°31'21"	25.00'	19.36'	32.95'	30.62'	N74°14'20"E
D	300°00'00"	50.00'	—	261.80'	—	—



APPROVED:
YORK COUNTY BOARD OF SUPERVISORS

BY: D. Mark Cantor
PLAT APPROVING AGENT

DATE: MARCH 20, 1989

STATE OF VIRGINIA
COUNTY OF YORK
IN THE CLERK'S OFFICE OF THE CIRCUIT COURT FOR THE COUNTY OF YORK THE 21ST DAY OF March, 1989 THIS MAP WAS PRESENTED AND ADMITTED TO RECORD AS THE LAW DIRECTS, PLAT BOOK 11, PAGE 44.

TESTE: W. M. ELLIOTT, CLERK
CLERK 2:34 P.M.

BY: Carl Drusselmir