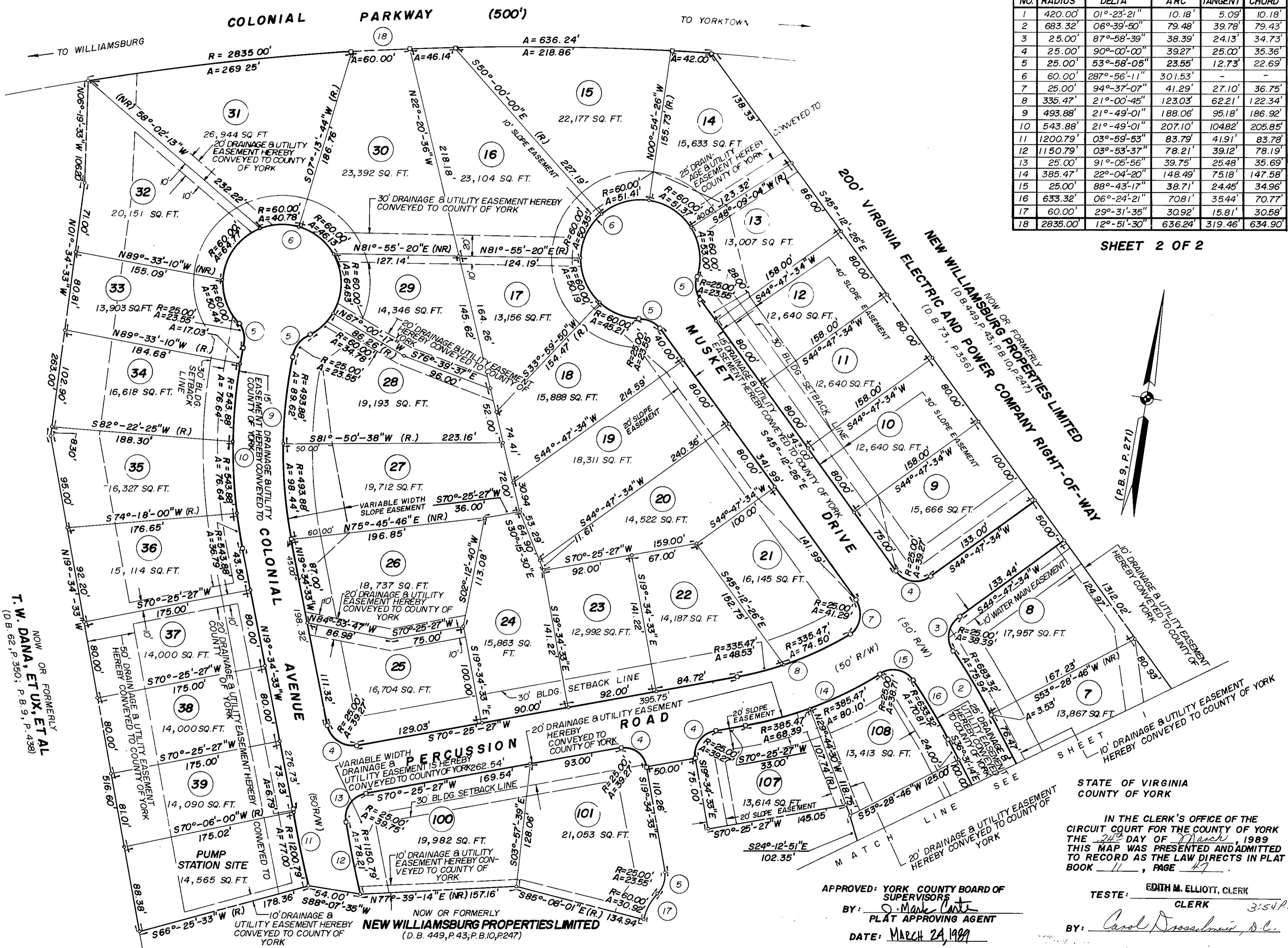


CURVE DATA TABLE					
NO.	RADIUS	DELTA	ARC	TANGENT	CHORD
1	420.00'	01°-23'-21"	10.18'	5.09'	10.18'
2	683.32'	06°-39'-50"	79.48'	39.78'	79.43'
3	25.00'	87°-58'-39"	38.39'	24.13'	34.73'
4	25.00'	90°-00'-00"	39.27'	25.00'	35.36'
5	25.00'	53°-58'-05"	23.55'	12.73'	22.69'
6	60.00'	287°-56'-11"	301.53'	-	-
7	25.00'	94°-37'-07"	41.29'	27.10'	36.75'
8	335.47'	21°-00'-45"	123.03'	62.21'	122.34'
9	493.88'	21°-49'-01"	188.06'	95.18'	186.92'
10	543.88'	21°-49'-01"	207.10'	104.82'	205.85'
11	1200.79'	03°-59'-53"	83.79'	41.91'	83.78'
12	1150.79'	03°-53'-37"	78.21'	39.12'	78.19'
13	25.00'	91°-05'-56"	39.75'	25.48'	35.69'
14	385.47'	22°-04'-20"	148.49'	75.18'	147.58'
15	25.00'	88°-43'-17"	38.71'	24.45'	34.96'
16	633.32'	06°-24'-21"	70.81'	35.44'	70.77'
17	60.00'	29°-31'-35"	30.92'	15.81'	30.58'
18	2835.00'	12°-51'-30"	636.24'	319.46'	634.90'

SHEET 2 OF 2



T. W. DANA, ET UX, ET AL
 NOW OR FORMERLY
 (D.B. 62, P. 350; P.B. 9, P. 438)

NEW WILLIAMSBURG PROPERTIES LIMITED
 (D.B. 449, P. 43; P.B. 10, P. 247)
 NOW OR FORMERLY
 (D.B. 73, P. 356)

STATE OF VIRGINIA
 COUNTY OF YORK

IN THE CLERK'S OFFICE OF THE
 CIRCUIT COURT FOR THE COUNTY OF YORK
 THIS 24th DAY OF March, 1989
 THIS MAP WAS PRESENTED AND ADMITTED
 TO RECORD AS THE LAW DIRECTS IN PLAT
 BOOK 11, PAGE 47

APPROVED: YORK COUNTY BOARD OF SUPERVISORS
 BY: *O. Mark Carter*
 PLAT APPROVING AGENT
 DATE: MARCH 24, 1989

TESTE: EDITH M. ELLIOTT, CLERK
 CLERK
 BY: *Carol Crossman, D.C.*