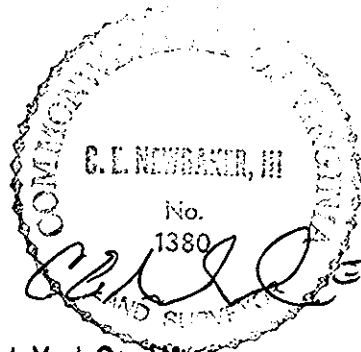


NO.	RADIUS	DELTA	ARC	TANGENT	CHORD
1	1949.86'	08°27'55"	288.08'	144.31'	287.82'
2	35.00'	90°11'49"	55.10'	35.12'	49.58'
3	2232.40'	06°10'10"	240.38'	120.31'	240.26'
4	583.76'	34°45'06"	354.07'	182.67'	348.67'
5	1067.62'	12°33'39"	234.05'	117.50'	233.58'
6	5565.65'	04°31'35"	439.69'	219.96'	439.58'
7	5665.65'	04°38'30"	459.00'	229.62'	458.87'
8	1167.62'	12°33'39"	255.97'	128.50'	255.46'
9	683.76'	34°45'06"	414.72'	213.96'	408.40'
10	633.76'	17°22'33"	192.20'	96.84'	191.46'
11	1117.62'	12°33'39"	245.01'	123.00'	244.52'
12	5615.65'	04°35'05"	449.34'	224.79'	449.22'
13	2332.40'	06°10'10"	251.15'	125.70'	251.03'
14	25.00'	74°11'14"	32.37'	18.90'	30.16'



Filed in the Clerk's Office, Circuit Court, York Co., VA.

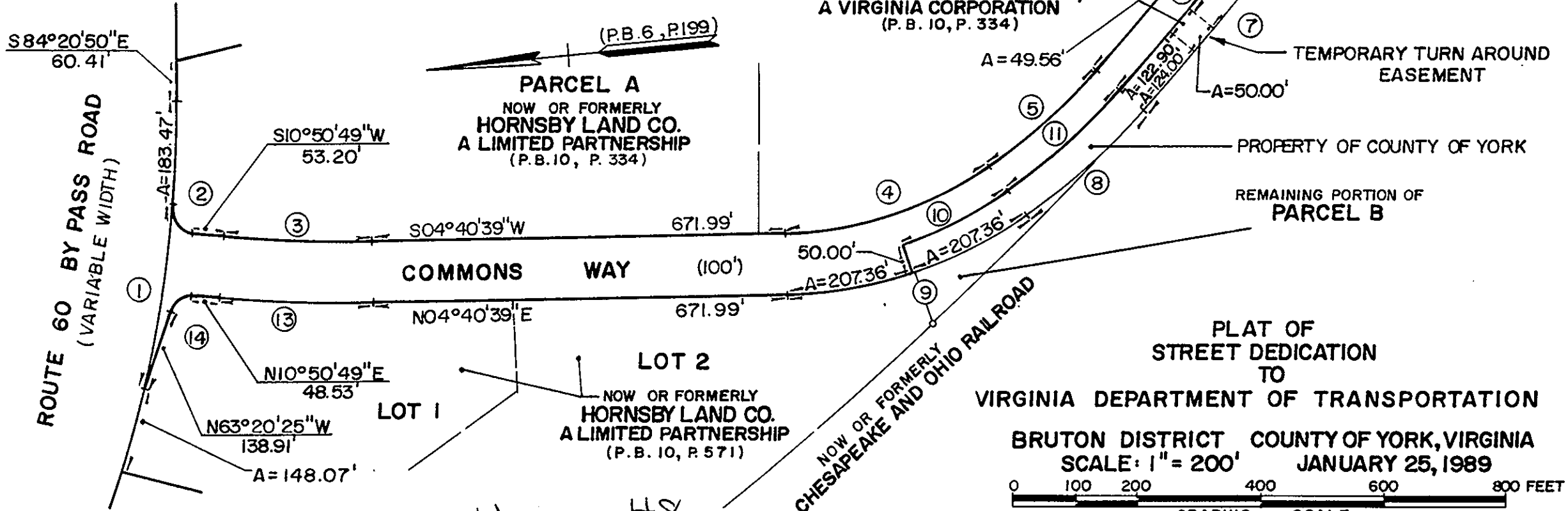
the 3rd day of April 1988

Teste:

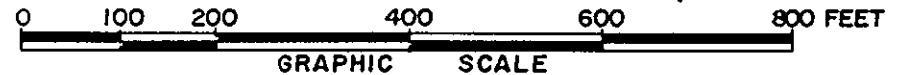
Edith M. Elliott, Clerk

[Signature]

PARCEL B
NOW OR FORMERLY
WILLIAMSBURG COMMONS, INC.,
A VIRGINIA CORPORATION
(P. B. 10, P. 334)



PLAT OF
STREET DEDICATION
TO
VIRGINIA DEPARTMENT OF TRANSPORTATION
BRUTON DISTRICT, COUNTY OF YORK, VIRGINIA
SCALE: 1" = 200' JANUARY 25, 1988



THE SIRINE GROUP, LTD.
SURVEYORS • ENGINEERS • PLANNERS
P.O. BOX 450, ROUTE 17, WHITE MARSH, VIRGINIA
23183

NOW OR FORMERLY
GREEN LANE, INC.

Plat Book No. 11 Page 48

AREA OF ROAD TO BE DEDICATED TO VDOT = 3.860 AC.