

VICINITY MAP
SCALE: 1" = 2000'

THE PLATTING OF THE LAND HEREON SHOWN IS WITH THE FREE CONSENT AND IN ACCORDANCE WITH THE DESIRES OF THE UNDERSIGNED OWNERS, CHRISTOPHER YORK ASSOCIATES, L.P., A VIRGINIA LIMITED PARTNERSHIP, BY CHRISTOPHER DEVELOPMENT COMPANY, A VIRGINIA CORPORATION, GENERAL PARTNER BY: Norman Schaeffler

NORMAN SCHAEFFLER, VICE PRESIDENT & GENERAL MANAGER

CITY OF Virginia Beach
STATE OF Virginia

I, Douglas C. Tucker, A NOTARY PUBLIC IN AND FOR THE CITY AND STATE AFORESAID, DO HEREBY CERTIFY THAT THE ABOVE NAMED PERSON WHOSE NAME IS SIGNED TO THE FOREGOING WRITING HAS ACKNOWLEDGED THE SAME BEFORE ME IN MY CITY AND STATE AFORESAID.

GIVEN UNDER MY HAND THIS 4th DAY OF April 1989.

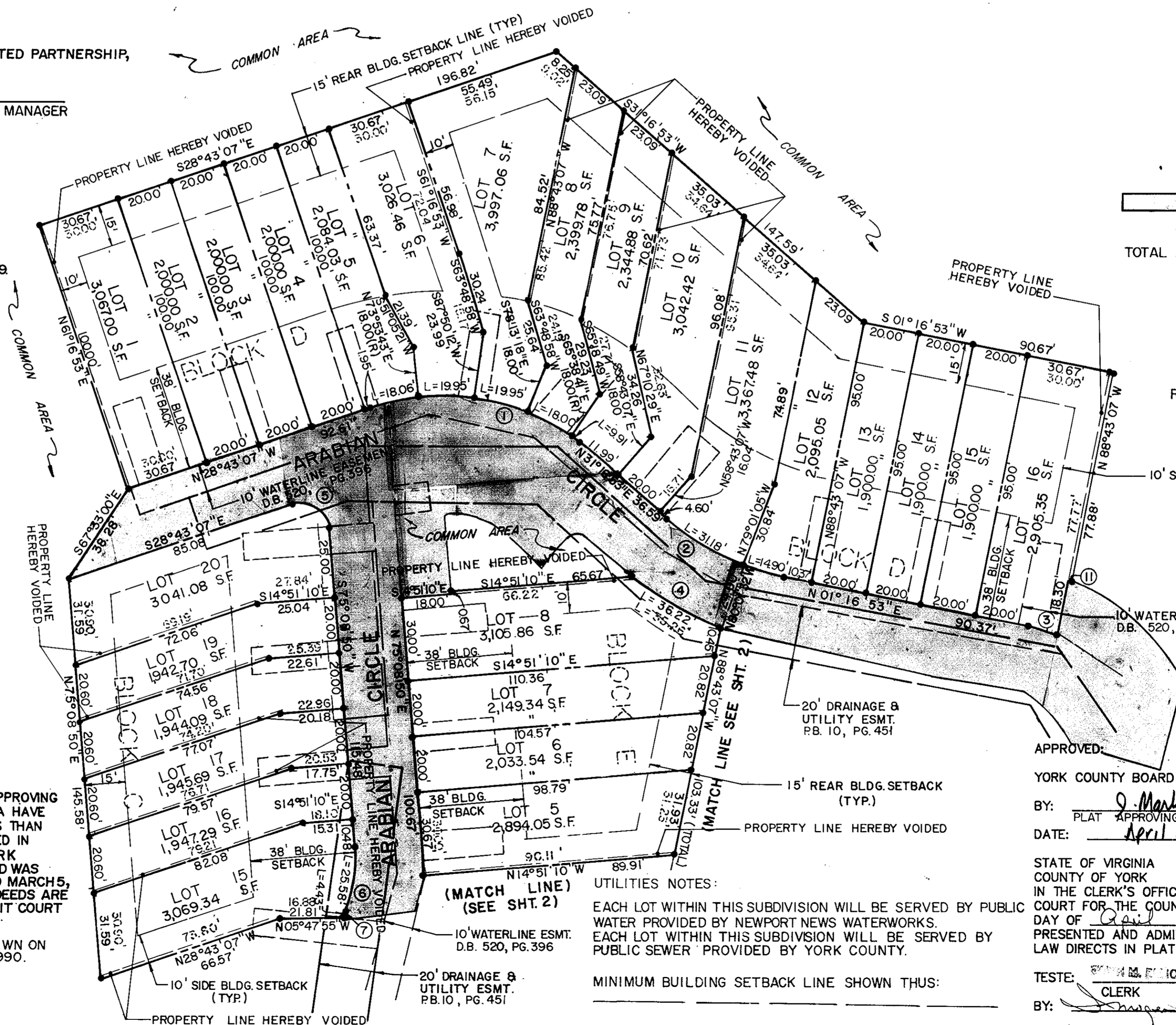
Douglas C. Tucker

NOTARY PUBLIC
MY COMMISSION EXPIRES: 4/6/92

TO THE BEST OF MY KNOWLEDGE AND BELIEF, ALL THE REQUIREMENTS AS SET FORTH IN THE ORDINANCE FOR APPROVING PLATS OF SUBDIVISION IN THE COUNTY OF YORK, VIRGINIA HAVE BEEN COMPLIED WITH, INCLUDING A CLOSURE OF NOT LESS THAN 1'/10,000'. THIS IS TO CERTIFY THAT THE LAND EMBRACED IN THIS SUBDIVISION IS IN THE NAME OF CHRISTOPHER YORK ASSOCIATES, L.P., A VIRGINIA LIMITED PARTNERSHIP, AND WAS ACQUIRED FROM PADGETT LAND TRUST BY DEED DATED MARCH 5, 1987 AND RECORDED IN DEED BOOK 472, PG. 790. THESE DEEDS ARE DULY RECORDED IN THE CLERK'S OFFICE OF THE CIRCUIT COURT OF THE COUNTY OF YORK, VIRGINIA.

I CERTIFY THAT MONUMENTS AND PIPES AS SHOWN ON THIS PLAT WILL BE SET ON OR BEFORE JANUARY 1, 1990.

William Lee Jessee
WILLIAM LEE JESSEE, LAND SURVEYOR NO. 1371



CURVE TABLE						
NO.	CH. BEARING	CHORD	DELTA	RADIUS	LENGTH	TAN.
1	S 01° 16' 53" W	82.00'	60° 00' 00"	82.00'	85.87'	47.34'
2	S 16° 16' 53" W	45.55'	30° 00' 00"	88.00'	46.08'	23.58'
3	N 07° 25' 25" E	10.06'	12° 17' 04"	47.00'	10.08'	5.06'
4	S 20° 01' 58" W	36.07'	18° 32' 00"	112.00'	36.23'	18.27'
5	N 23° 12' 52" E	15.75'	103° 51' 57"	10.00'	18.13'	12.78'
6	S 89° 30' 21" E	25.27'	30° 41' 38"	47.75'	25.58'	13.10'
7	N 76° 03' 41" W	71.91'	59° 33' 35"	72.39'	75.25'	41.42'
8	S 66° 33' 09" W	33.53'	40° 32' 29"	48.39'	34.24'	17.87'
9	S 51° 13' 07" E	22.97'	15° 00' 00"	88.00'	23.04'	11.59'
10	N 88° 43' 07" W	72.00'	60° 00' 00"	72.00'	75.40'	41.57'
11	N 10° 25' 45" E	0.68'	00° 35' 43"	65.00'	0.68'	0.34'

RESUBDIVISION OF
YORKSHIRE DOWNS
PHASE 2, SECTION I
COUNTY OF YORK, VIRGINIA

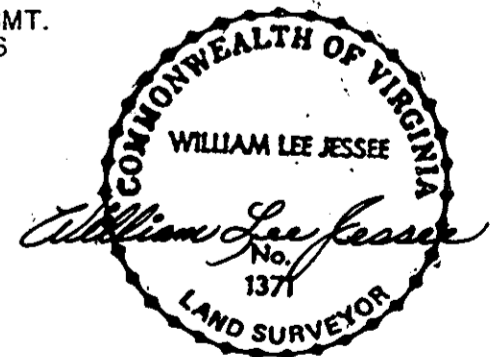


SCALE: 1" = 30'
JANUARY 3, 1989
SHEET 1 OF 2

PRIVATE STREETS & PARKING TO BE MAINTAINED BY THE HOMEOWNERS ASSOCIATION
TOTAL AREA WITHIN LOTS 3.64 Ac.

- ⊕ MONUMENTS FOUND
- ⊖ MONUMENTS SET
- IRON PIPES FOUND
- IRON PIPES SET

REFERENCES:
(P.B. 10, PG. 451)
(P.B. 10, PG. 552)
(P.B. 10, PG. 561)



APPROVED:
YORK COUNTY BOARD OF SUPERVISORS
BY: J. Mark Carter
PLAT APPROVING AGENT
DATE: April 4, 1989

STATE OF VIRGINIA
COUNTY OF YORK
IN THE CLERK'S OFFICE OF THE CIRCUIT COURT FOR THE COUNTY OF YORK THE 5th DAY OF April, 1989 THIS MAP WAS PRESENTED AND ADMITTED TO RECORD AS THE LAW DIRECTS IN PLAT BOOK 11, PAGE 51

TESTE: William M. Elliott, Clerk
CLERK
BY: Joseph S. Benzema

UTILITIES NOTES:
EACH LOT WITHIN THIS SUBDIVISION WILL BE SERVED BY PUBLIC WATER PROVIDED BY NEWPORT NEWS WATERWORKS.
EACH LOT WITHIN THIS SUBDIVISION WILL BE SERVED BY PUBLIC SEWER PROVIDED BY YORK COUNTY.
MINIMUM BUILDING SETBACK LINE SHOWN THUS: