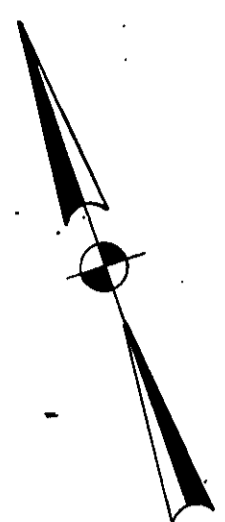


THIS PLAT IS AN EXHIBIT TO THE DECLARATION OF YORKSHIRE DOWNS CONDOMINIUM, DATED MARCH 1, 1988 AND RECORDED IN DEED BOOK _____, PAGE _____

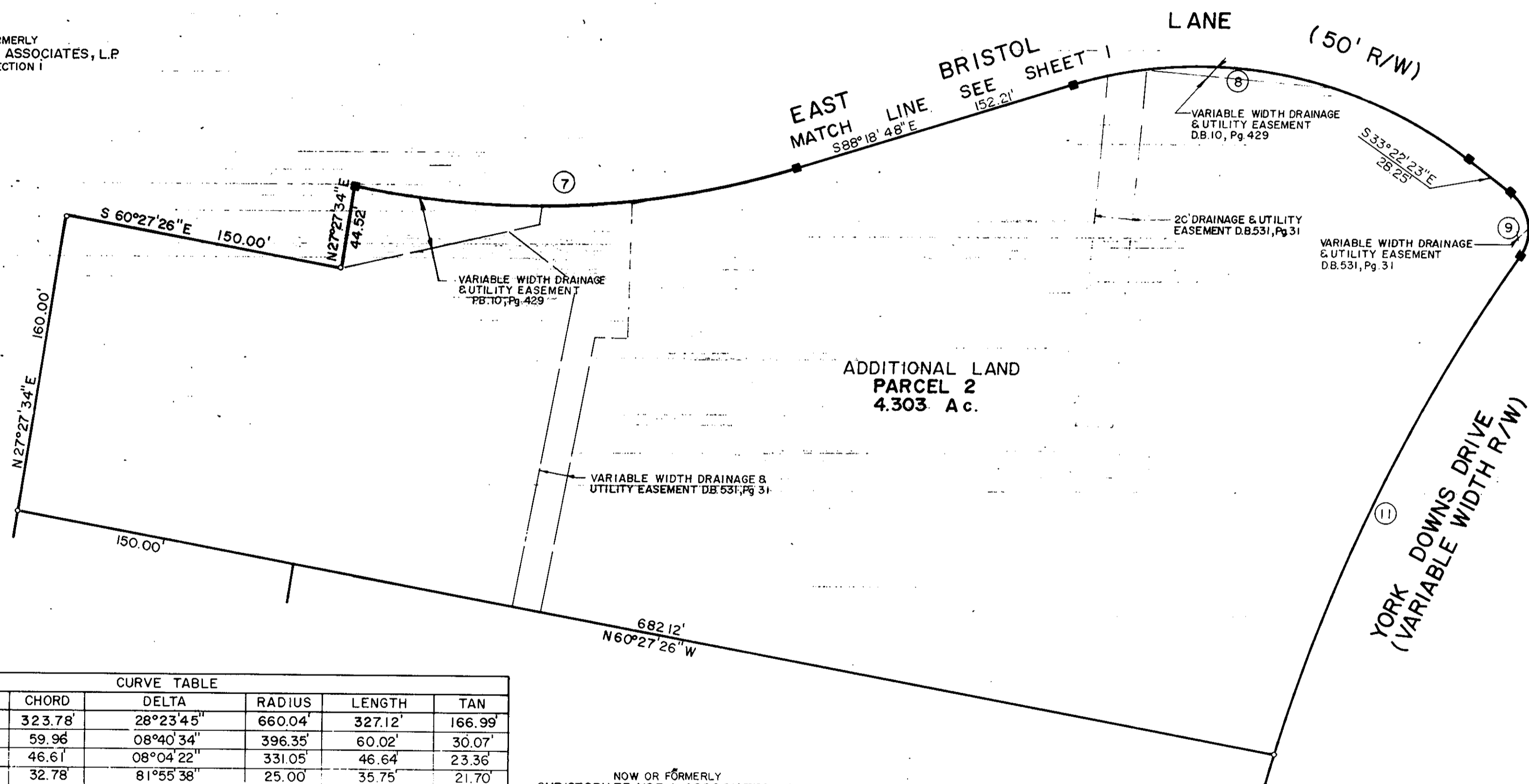
YORKSHIRE DOWNS CONDOMINIUM
PHASE V
LOCATED IN YORK COUNTY, VIRGINIA

ta
Talbot & Associates, Ltd.
Architects, Engineers, Planners, Surveyors, Landscape Architects
100 Landmark Square, Virginia Beach, Va. 23452
739 Thimble Shoals Blvd., Suite 1006, Newport News, Va. 23606

SCALE: 1" = 50' FEBRUARY 17, 1989
SHEET 2 OF 3



NOW OR FORMERLY
CHRISTOPHER YORK ASSOCIATES, L.P.
PHASE 1, SECTION I



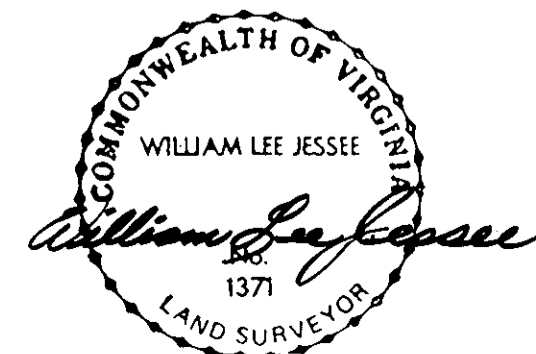
NOW OR FORMERLY
CHRISTOPHER YORK ASSOCIATES, L.P.
PARCEL 'C'

CURVE TABLE

NO.	CH. BEARING	CHORD	DELTA	RADIUS	LENGTH	TAN
C01	S 21° 22' 45" W	323.78'	28° 23' 45"	660.04'	327.12'	166.99'
C02	S 68° 49' 48" W	59.96'	08° 40' 34"	396.35'	60.02'	30.07'
C03	S 60° 39' 48" W	46.61'	08° 04' 22"	331.05'	46.64'	23.36'
C04	S 74° 20' 12" E	32.78'	81° 55' 38"	25.00'	35.75'	21.70'
C05	S 60° 50' 35" E	262.37'	54° 56' 24"	284.39'	272.70'	147.86'
C06	S 76° 59' 37" E	164.88'	22° 38' 22"	420.00'	165.96'	84.07'
C07	S 73° 45' 06" E	236.33'	29° 07' 23"	470.00'	238.90'	122.09'
C08	S 60° 50' 35" E	216.24'	54° 56' 24"	234.39'	224.76'	121.86'
C09	S 10° 09' 49" W	34.44'	87° 04' 25"	25.00'	37.99'	23.75'
C10	S 55° 09' 49" W	48.74'	02° 55' 35"	954.40'	48.75'	24.38'
C11	S 44° 46' 08" W	296.36'	17° 51' 49"	954.40'	297.56'	150.00'
C12	S 01° 39' 19" E	32.50'	15° 14' 07"	122.60'	32.60'	16.39'
C13	S 68° 56' 02" W	48.89'	08° 28' 06"	331.05'	48.93'	24.51'
C14	S 42° 47' 28" W	46.04'	06° 58' 53"	378.08'	46.07'	23.06'
C15	S 32° 43' 04" W	4.54'	13° 01' 24"	20.00'	4.55'	2.28'

I WILLIAM LEE JESSEE, A DULY REGISTERED SURVEYOR DO HEREBY CERTIFY THAT THIS DRAWING IS ACCURATE (WITHIN NORMAL TOLERANCES) AND COMPLIES WITH SECTION 55-79.58(a) OF THE CONDOMINIUM ACT AND THAT THE UNITS SHOWN HEREON ARE SUBSTANTIALLY COMPLETED IN ACCORDANCE HERewith.

William Lee Jessee, DATE 5-1-89



Deed Book No. 11 Page 147

Filed in the Clerk's Office, Circuit Court, York Co., Va. on the 5th day of May 1989 at 11:25 AM
Teste: *Nancy B. Kaine*, Clerk
Karen D. Watkins