

**YORKSHIRE DOWNS  
 CONDOMINIUM  
 UNIT DIMENSION PLAN  
 PHASE VIII**



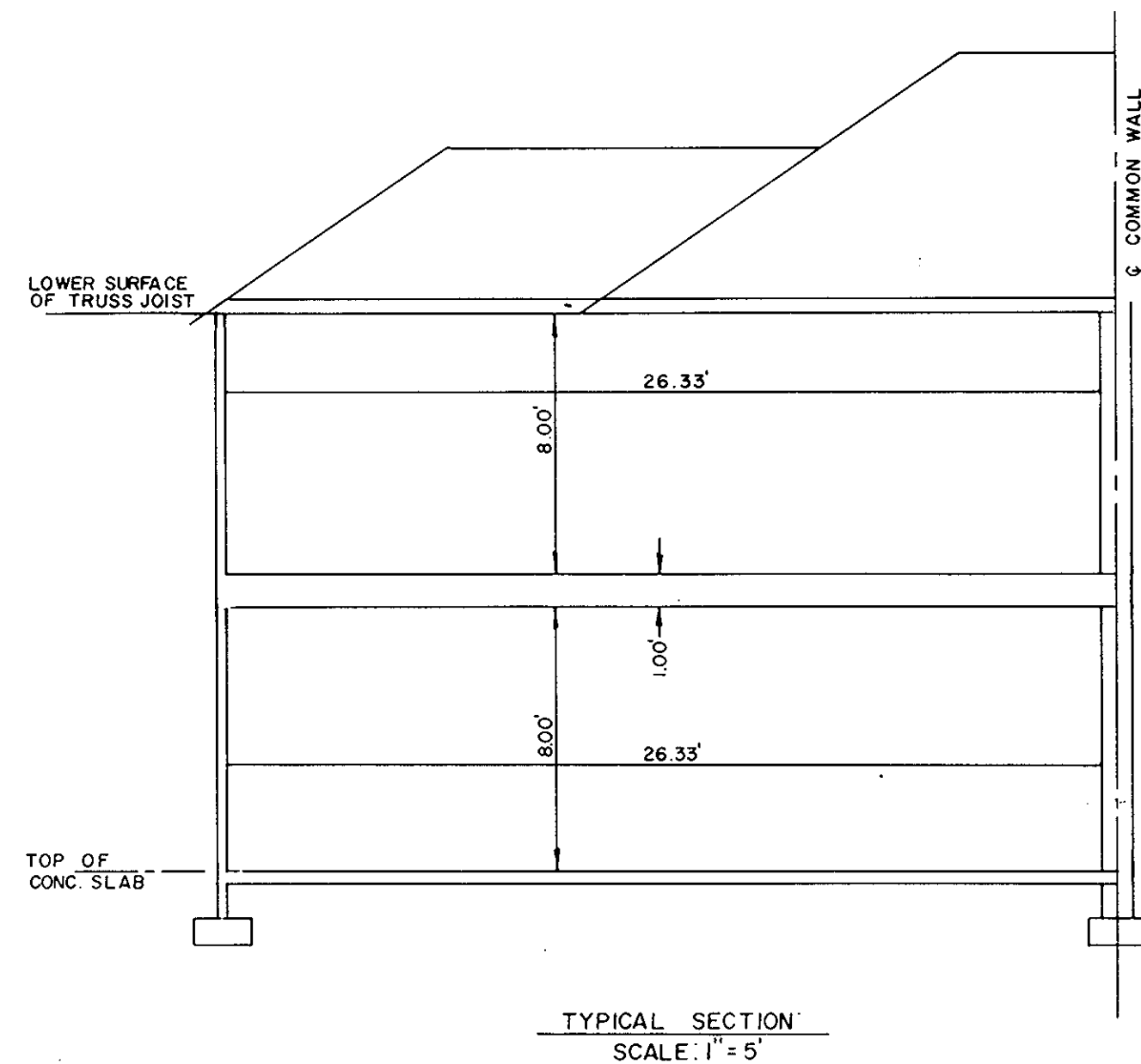
SCALE: AS SHOWN

SHEET 3 OF 3

**NOTE:**

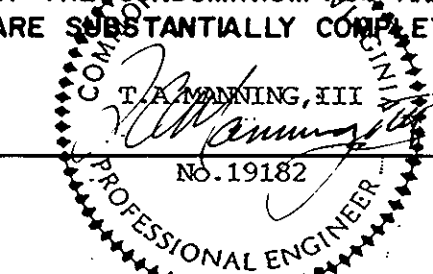
SECTIONAL VIEWS OF UNITS AND ALL UNIT DIMENSIONS WERE OBTAINED FROM THE ARCHITECTURAL PLANS OF RICHARD LEE GRIMSTEAD, A REGISTERED ARCHITECT WITH THE COMMONWEALTH OF VIRGINIA.

 LIMITED COMMON ELEMENT



THIS DRAWING IS A COPY OF THE ORIGINAL DRAWING AND IS NOT TO BE USED FOR CONSTRUCTION OF ANY OTHER PROJECT WITHOUT THE WRITTEN PERMISSION OF THE ARCHITECT.  
 D. Manning, III  
 November 13, 1989

I, T. A. MANNING, III, A DULY REGISTERED ENGINEER, DO HEREBY CERTIFY THAT THIS DRAWING IS ACCURATE (WITHIN NORMAL TOLERANCES) AND COMPLIES WITH SECTION 55-79.58(b) OF THE CONDOMINIUM ACT AND THAT THE UNITS SHOWN HEREON ARE SUBSTANTIALLY COMPLETED IN ACCORDANCE HEREWITH.

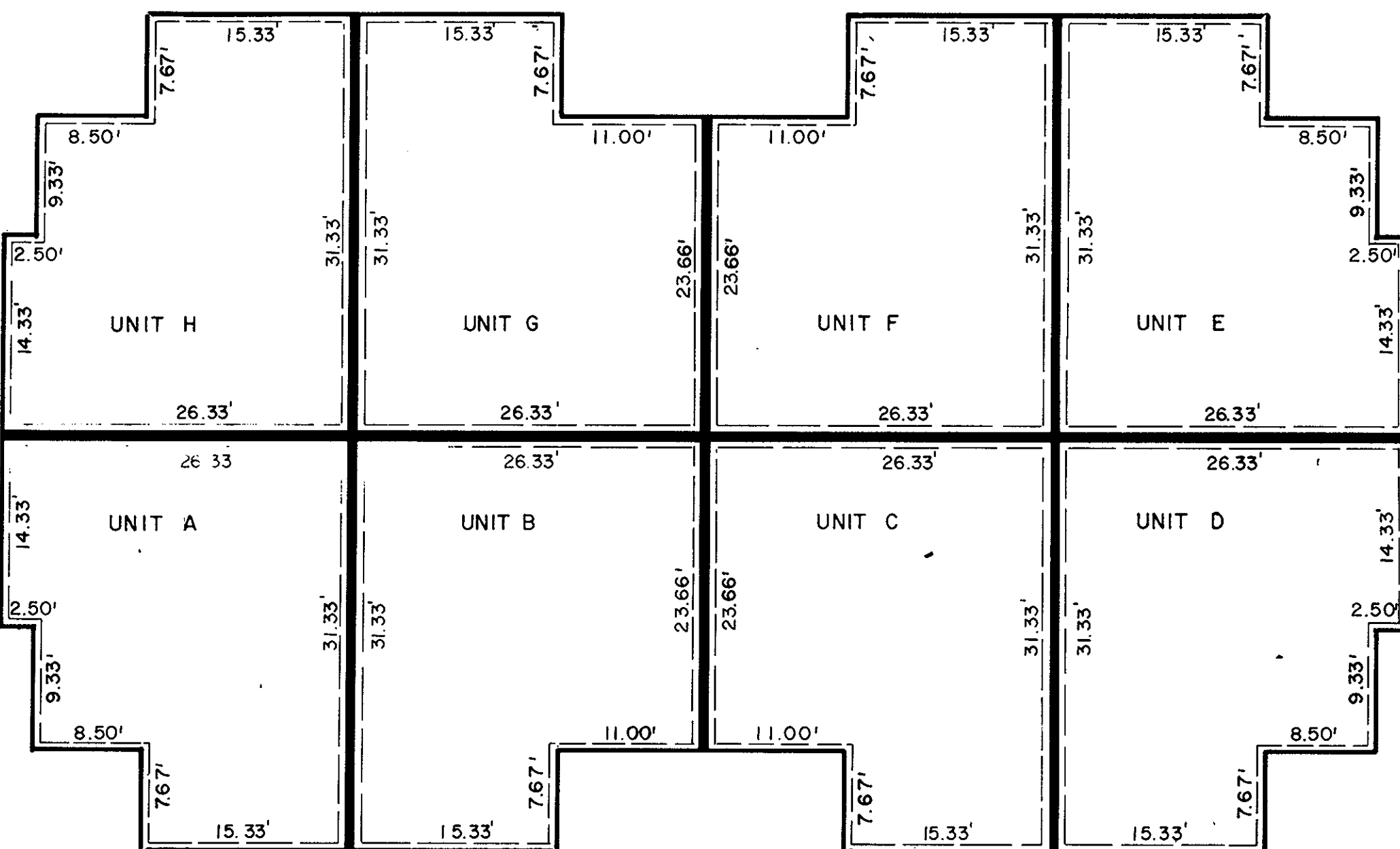


DATE 11/1/89

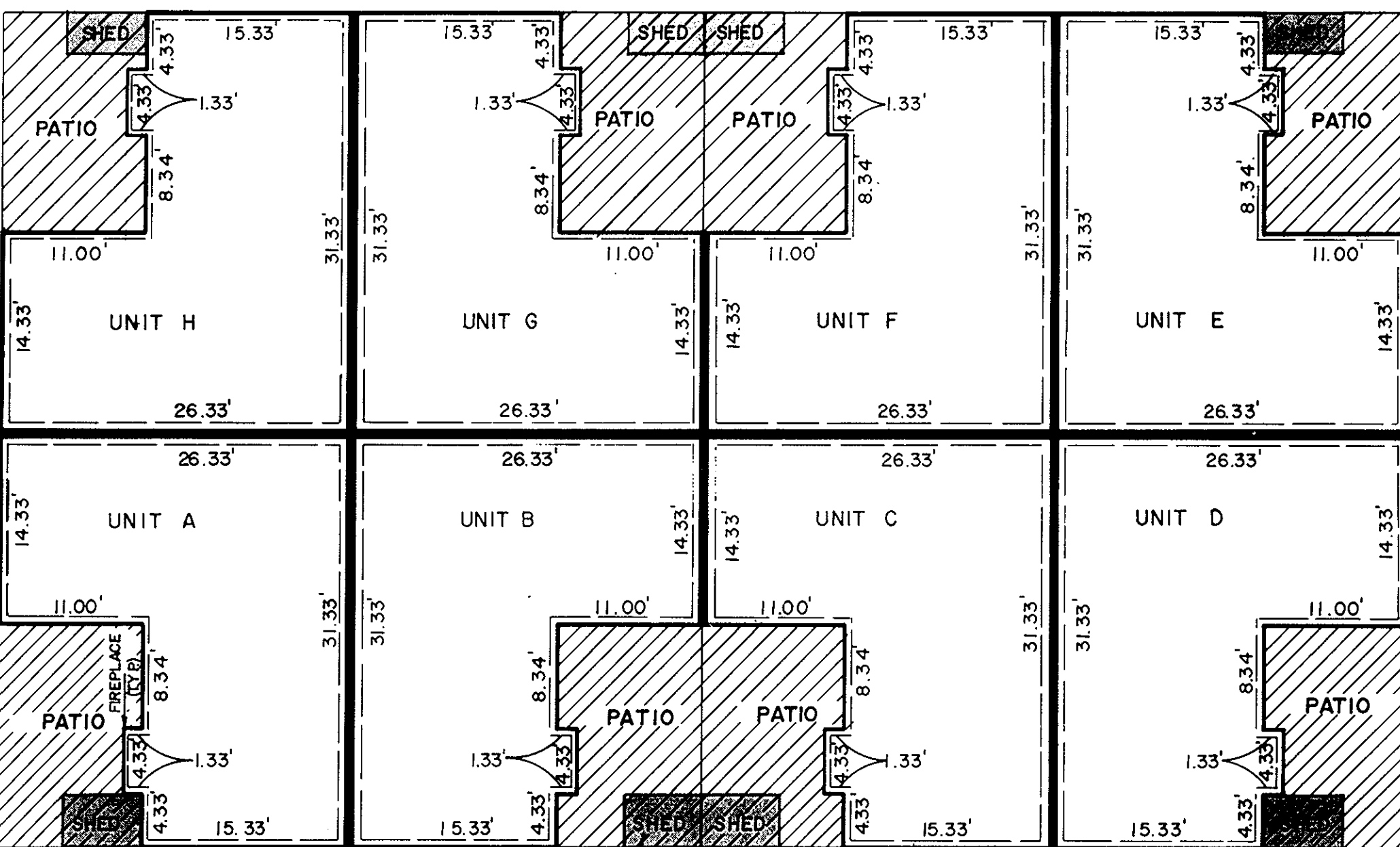
PROJECT NO: 872217  
 FILE NO: 872217-AS  
 Page 13

Filed in the Clerk's Office, Circuit Court, York Co., Va. the 14th day of November 1989

Teste: Nancy B. Kane, Clerk



**SECOND FLOOR PLAN**  
 1" = 10'



**FIRST FLOOR PLAN**  
 1" = 10'