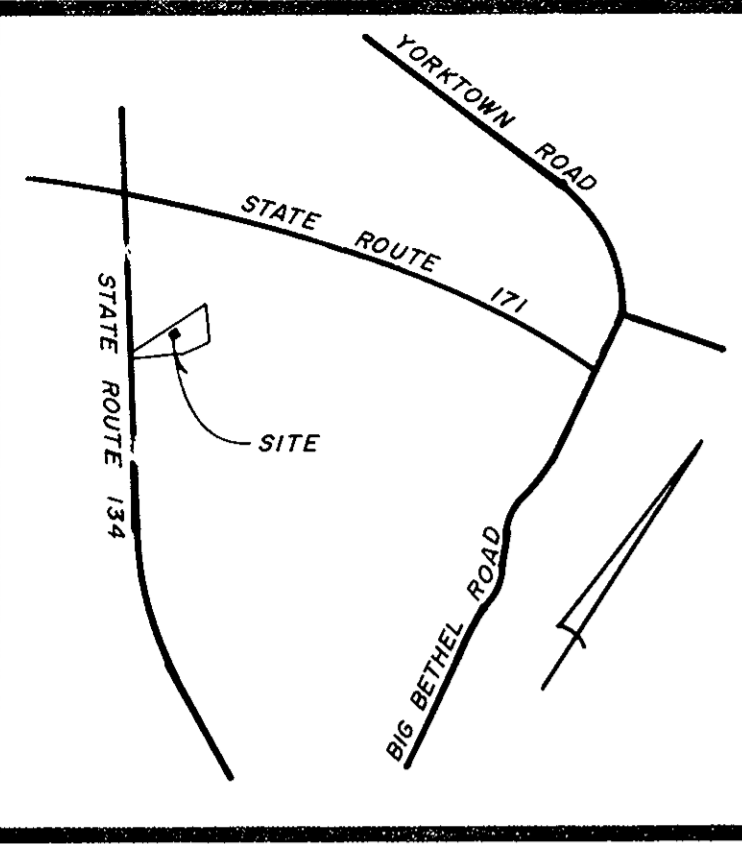


RESUBDIVISION OF LOTS A THRU F - BLOCK 2
MEADOWLAKE FARMS
 SECTION THREE
 COUNTY OF YORK
 VIRGINIA

COENEN & ASSOCIATES, INC.
 ENGINEERS - PLANNERS - SURVEYORS
 696 J. CLYDE MORRIS BLVD. - NEWPORT NEWS, VA.
 SCALE: 1" = 100' DATE: NOVEMBER 29, 1989



VICINITY MAP
 SCALE 1" = 2,000'

THE PROPERTY SHOWN ON THIS PLAT IS SUBJECT TO THE PROVISIONS OF THAT CERTAIN DECLARATION OF COVENANTS, CONDITIONS AND RESTRICTIONS DATED SEPTEMBER 21, 1985 RECORDED IN THE CLERK'S OFFICE OF THE CIRCUIT COURT FOR THE COUNTY OF YORK, VIRGINIA IN DEED BOOK 431, PAGE 780. ATLANTIC HOMES DEVELOPMENT CORPORATION IN RECORDING THIS PLAT OF RESUBDIVISION OF LOTS A THRU F, BLOCK 2, MEADOWLAKE FARMS SECTION THREE HAS DESIGNATED CERTAIN AREAS IN SAID DECLARATION AS "CLUSTER COMMON AREA" INTENDED FOR USE BY OWNERS IN MEADOWLAKE FARMS SECTION THREE FOR USES AS SET FORTH IN SAID DECLARATION OF COVENANTS, RESTRICTIONS AND CONDITIONS. THE SAID CLUSTER COMMON AREAS ARE NOT HEREBY DESIGNATED FOR USE TO THE GENERAL PUBLIC, BUT FOR THE COMMON USE AND ENJOYMENT OF THE HOMEOWNERS OF MEADOWLAKE FARMS SECTION THREE AS MORE FULLY PROVIDED IN SAID RESTRICTIONS.

THE PLATTING OF THE LAND HEREON SHOWN IS WITH THE FREE CONSENT AND IN ACCORDANCE WITH THE DESIRE OF THE UNDERSIGNED OWNER, PROPRIETOR, AND TRUSTEES, IF ANY.

ATLANTIC HOMES DEVELOPMENT CORPORATION
 KENNETH L. ALLEN, PRES. SVEIN J. LASSEN, SECRETARY
 DATE: 12/1/89

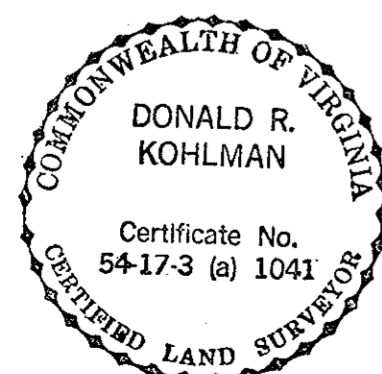
STATE OF VIRGINIA, TO WIT:
 I, Frances K Barber, A NOTARY PUBLIC IN AND FOR THE State of Virginia, DO HEREBY CERTIFY THAT THE ABOVE NAMED PERSONS WHOSE NAMES ARE SIGNED TO THE FOREGOING WRITING HAVE ACKNOWLEDGED THE SAME BEFORE ME IN MY City AND STATE AFORESAID. GIVEN UNDER MY HAND THIS 1st DAY OF Dec 1989

Frances K Barber
 NOTARY PUBLIC

MY COMMISSION EXPIRES July 4, 1990

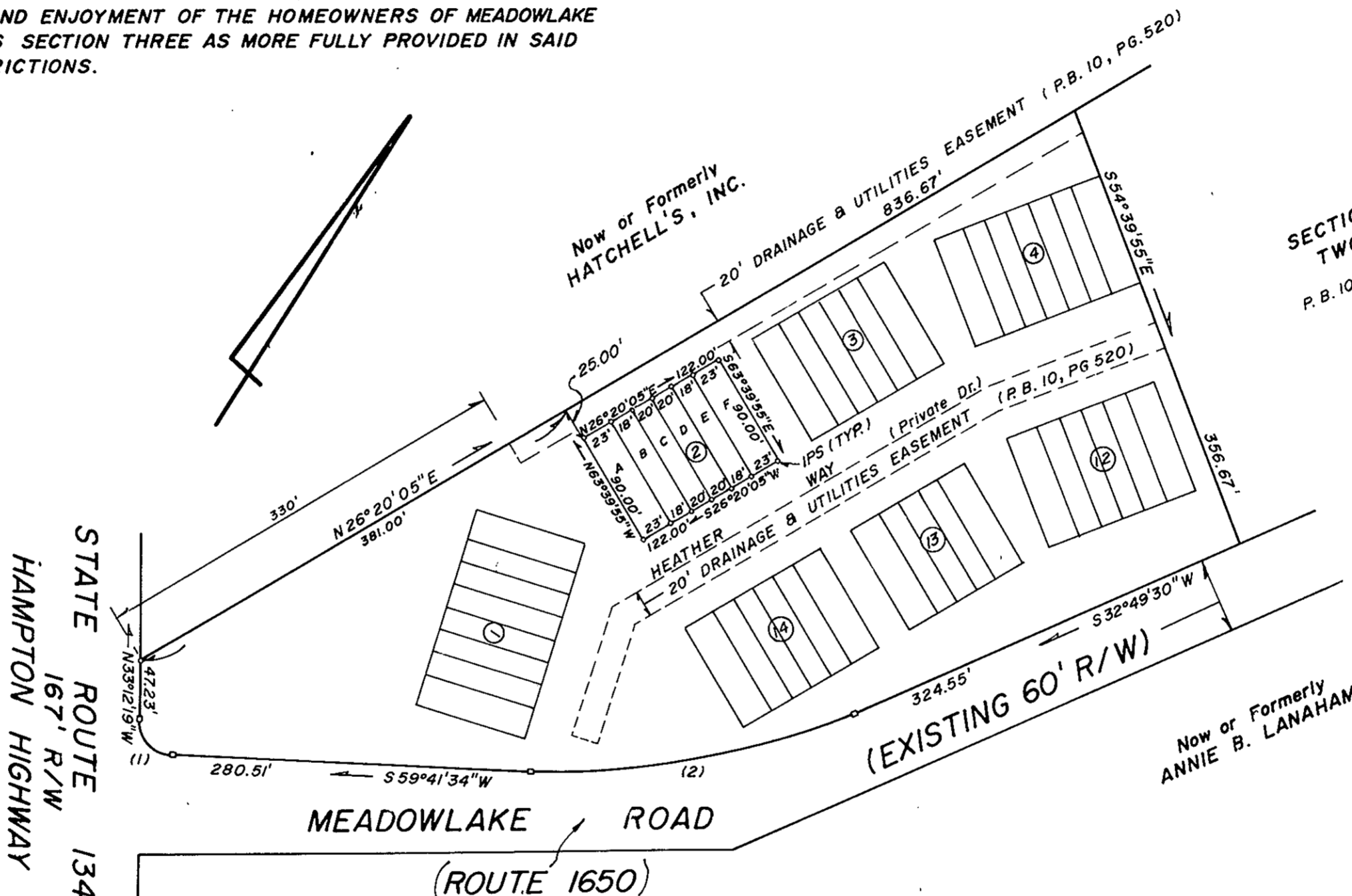
TO THE BEST OF MY KNOWLEDGE AND BELIEF, ALL THE REQUIREMENTS AS SET FORTH IN THE ORDINANCE FOR APPROVING PLATS OF SUBDIVISION IN THE COUNTY OF YORK, VIRGINIA, HAVE BEEN COMPLIED WITH INCLUDING A CLOSURE OF NOT LESS THAN 1/10,000.

THIS IS TO CERTIFY THAT THE LAND EMBRACED IN THIS SUBDIVISION IS IN THE NAME OF ATLANTIC HOMES DEVELOPMENT CORPORATION, A VIRGINIA CORPORATION AND WAS ACQUIRED FROM BANK OF VIRGINIA TRUST COMPANY, TRUSTEE, BY DEED DATED AUGUST 23, 1983 AND DULY RECORDED IN THE CLERK'S OFFICE OF THE CIRCUIT COURT OF THE COUNTY OF YORK, VIRGINIA, IN DEED BOOK 383, PAGE 692. I CERTIFY THAT MONUMENTS AND/OR IRON PIPES AS SHOWN ON THIS PLAT WILL BE SET ON OR BEFORE JUNE 1, 1990.



Donald R. Kohlman
 DONALD R. KOHLMAN
 CERTIFIED LAND SURVEYOR

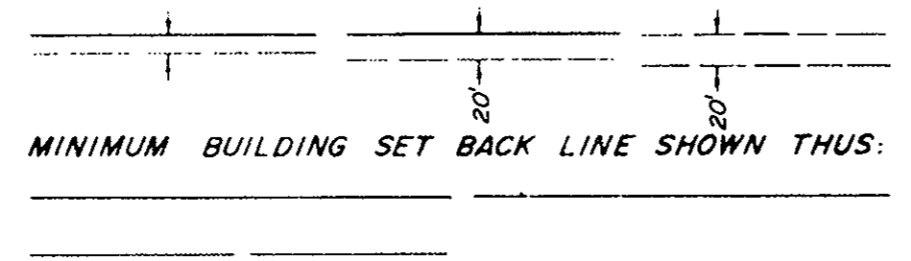
EACH LOT WITHIN THIS SUBDIVISION IS SERVED BY PUBLIC SEWER PROVIDED BY THE COUNTY OF YORK, VIRGINIA.
 EACH LOT WITHIN THIS SUBDIVISION IS SERVED BY PUBLIC WATER PROVIDED BY THE CITY OF NEWPORT NEWS



AREA WITHIN LOTS.....	0.2521 ACRES
AREA WITHIN R/W.....	0.0000 "
TOTAL SUBDIVIDED AREA.....	0.2521 ACRES

—○— MONUMENTS
 —○— IRON PIPES or IRON RODS

EASEMENTS SHOWN THUS ARE HEREBY CONVEYED TO THE COUNTY OF YORK FOR DRAINAGE & OTHER UTILITIES.



CURVE DATA TABLE						
No.	DELTA	RADIUS	TANGENT	ARC	CHORD	CH. BEARING
1	87°06'07"	25.00'	23.77'	38.01'	34.45'	N 76°45'22" W
2	26°52'04"	550.00'	131.37'	257.92'	255.56'	S 46°15'32" W

APPROVED:
 YORK COUNTY BOARD OF SUPERVISORS

BY J. Mark Carter
 PLAT APPROVING AGENT
 DATE JANUARY 22, 1990

STATE OF VIRGINIA
 COUNTY OF YORK
 IN THE CLERK'S OFFICE OF THE CIRCUIT COURT FOR THE COUNTY OF YORK THE 23rd DAY OF Jan 19 90
 THIS MAP WAS PRESENTED AND ADMITTED TO RECORD AS THE LAW DIRECTS, PLAT BOOK 11, PAGE 156

TESTE: HANDY B. KANE, CLERK
 BY: Carol R. ...