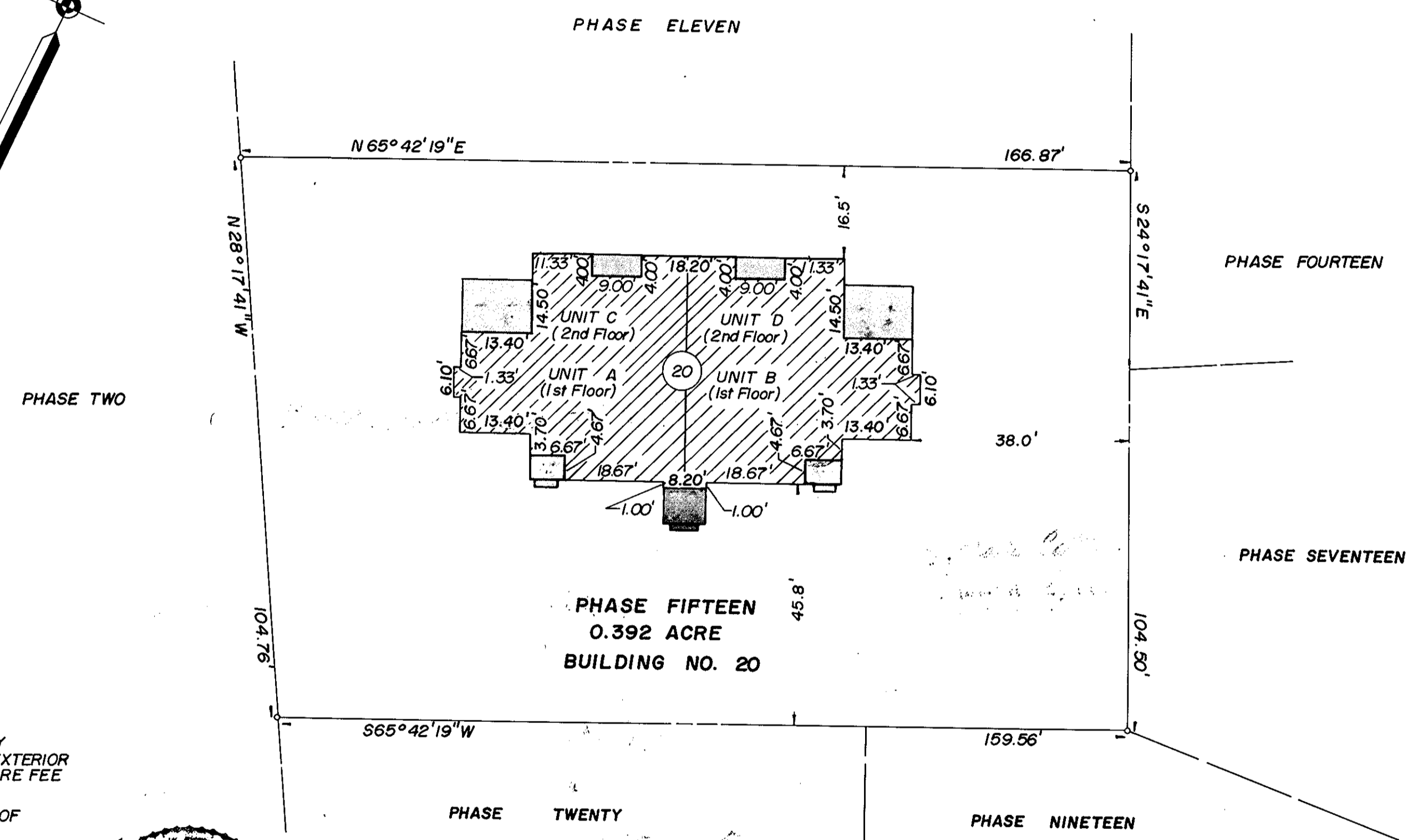
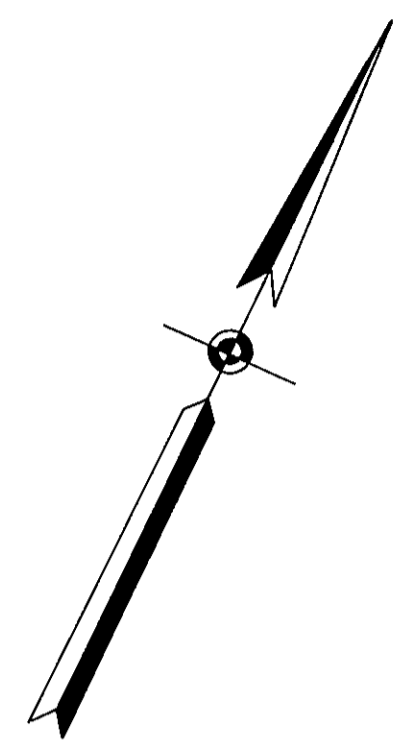


SHEET 2 OF 2
BURNT BRIDGE RUN CONDOMINIUMS
 PHASE FIFTEEN
 GRAFTON DISTRICT COUNTY OF YORK, VIRGINIA
 SCALE: 1" = 20' FEBRUARY, 1990

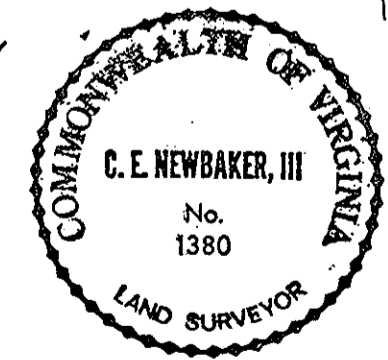


THE SIRINE GROUP, LTD.
 SURVEYORS • ENGINEERS • PLANNERS
 P.O. BOX 450, ROUTE 17
 WHITE MARSH, VIRGINIA
 23183



- NOTES:
1. ALL BUILDING DIMENSIONS SHOWN HEREON ARE EXTERIOR DIMENSIONS AND ARE IN FEET.
 2. THE DESIGNATION OF FEE TITLE AREA IS SUPERSEDED BY THE DECLARATION AND IS NOT INTENDED TO IMPLY THAT EXTERIOR WALLS, BEARING WALLS AND OTHER COMMON ELEMENTS ARE FEE TITLE AREA.
 3. I CERTIFY THAT THIS PLAT COMPLIES WITH THE PROVISIONS OF SUBSECTION (a) OF 55-79.58 OF THE CONDOMINIUM ACT AND THAT ALL UNITS DEPICTED HEREON HAVE BEEN SUBSTANTIALLY COMPLETED.

SIGNED: C. E. Newbaker III
 C. E. NEWBAKER III



LEGEND

	FEE TITLE AREA
	COMMON ELEMENTS
	LIMITED COMMON ELEMENTS
	LIMIT OF AREA OR ELEMENTS

Plat Book No. 11 Page 176

Filed in the Clerk's Office, Circuit Court, York Co., Va.
 the 5th day of March 1990
 12:06 P.M.
 Teste: Nancy B. Kane, Clerk
Ronald D. King, D.C.