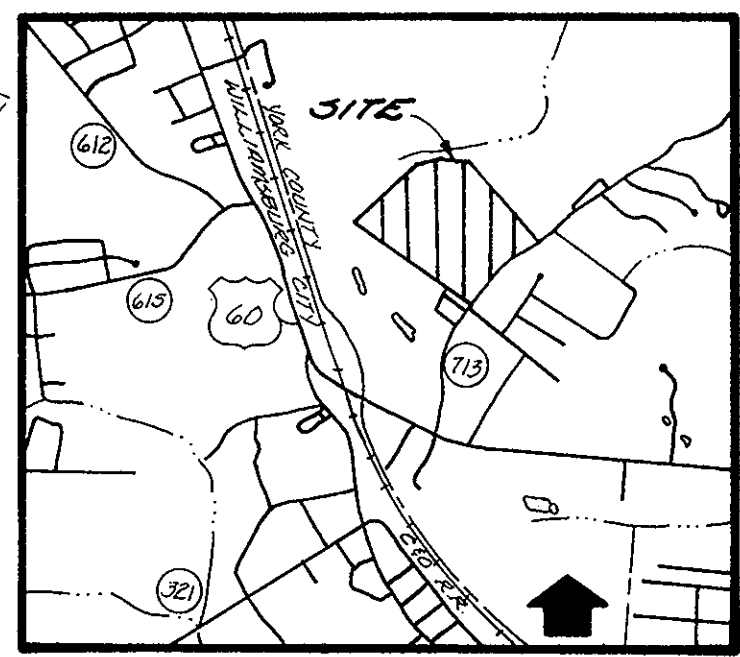
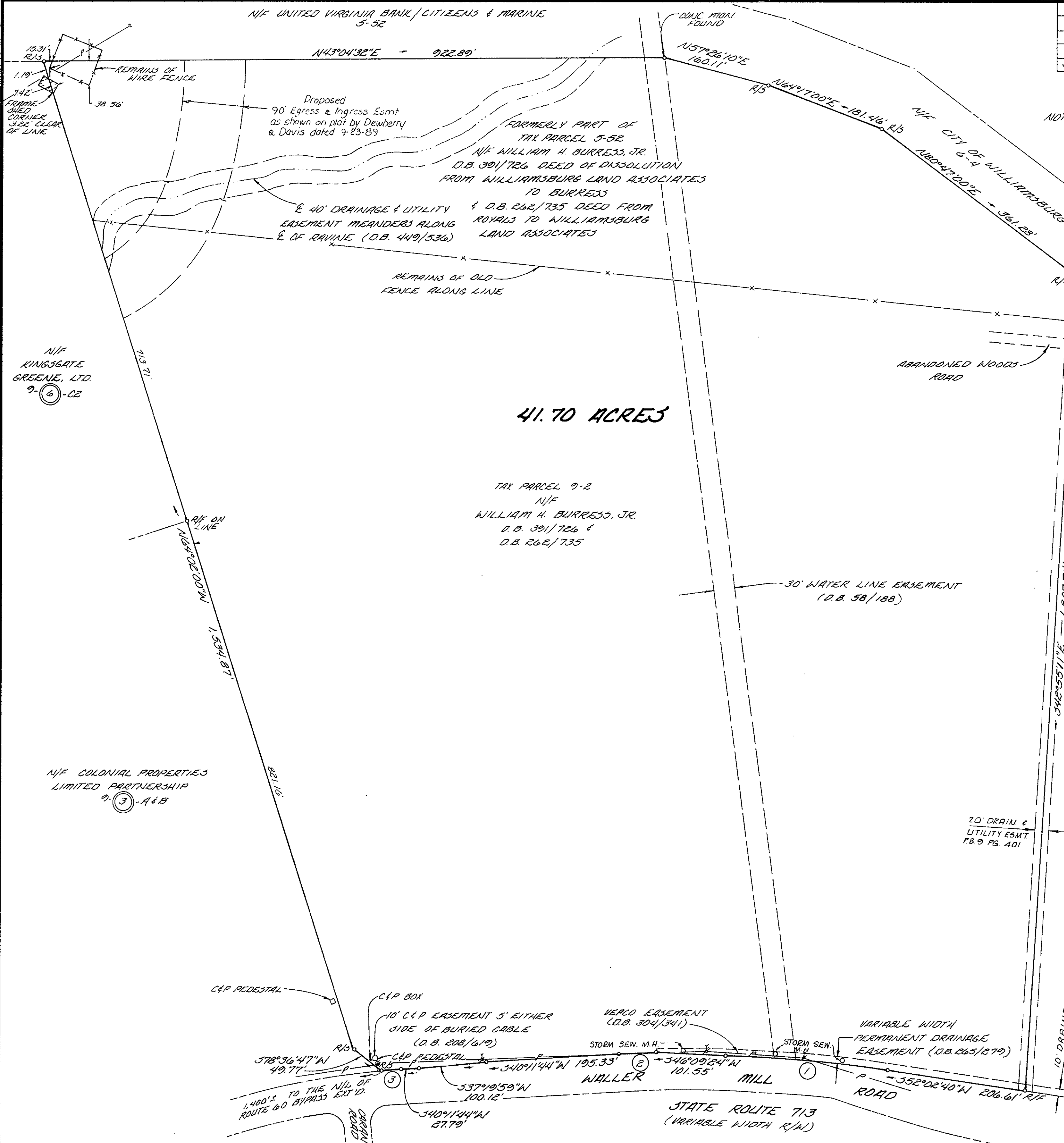


CURVE DATA						
NO.	ARC	RADIUS	DELTA	TAN	BEARING	CHORD
1	243.48'	1,934.86'	7°12'36"	121.90'	348°26'26"W	243.32'
2	55.53'	1,239.86'	1°38'24"	27.77'	341°00'56"W	55.53'
3	30.98'	1,170.92'	1°30'57"	15.40'	339°26'16"W	30.97'

NOTE: THE PROPERTY HEREON IS NOT LOCATED WITHIN A HUD DEFINED FLOOD HAZARD ZONE.



VICINITY MAP  
SCALE: 1" = 2,000'



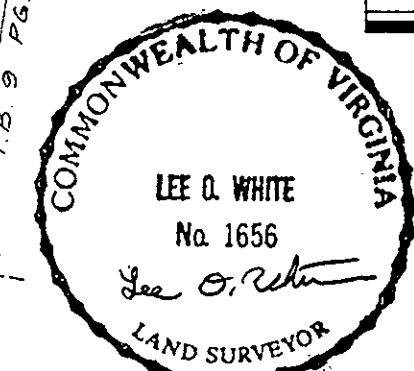
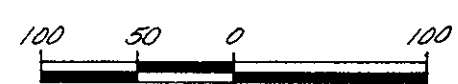
41.70 ACRES

TAX PARCEL 9-2  
N/F  
WILLIAM H. BURRESS, JR.  
D.B. 391/726 &  
D.B. 262/735

N/F  
WILLIAMSBURG NEW  
TESTAMENT CHURCH  
9-5A

PLAT SHOWING IMPROVEMENTS ON  
41.70 ACRES OF LAND  
FOR FAIRFIELD WILLIAMSBURG  
TIME-SHARE PROJECT

BRUTON DISTRICT, YORK COUNTY, VIRGINIA  
SCALE: 1" = 100' MARCH 14, 1990



**Dewberry & Davis**

Engineers  
Architects  
Planners  
Surveyors

2701 Emerywood Parkway, Suite 106  
Richmond, Virginia 23229 Tel. No. (804) 672-0452

Plot Book No. 11 Page 186  
Filed in the County of York, Virginia  
on 27th day of March 1990  
R. S. Dewberry & Davis, Inc. D.C.

N/F  
KINGSGATE  
GREENE, LTD.  
9-6-C2

N/F COLONIAL PROPERTIES  
LIMITED PARTNERSHIP  
9-3-A+B

