

THIS PLAT IS AN EXHIBIT TO THE DECLARATION OF YORKSHIRE DOWNS CONDOMINIUM, DATED MARCH 1, 1989 AND RECORDED IN DEED BOOK \_\_\_\_\_, PAGE \_\_\_\_\_

YORKSHIRE DOWNS CONDOMINIUM PHASE XIII LOCATED IN YORK COUNTY, VIRGINIA

Logo for Talbot & Associates, Ltd. Architects, Engineers, Planners, Surveyors, Landscape Architects. 100 Landmark Square, Virginia Beach, Va. 23462. 739 Thimble Shoals Blvd., Suite 1008, Newport News, VA 23606.

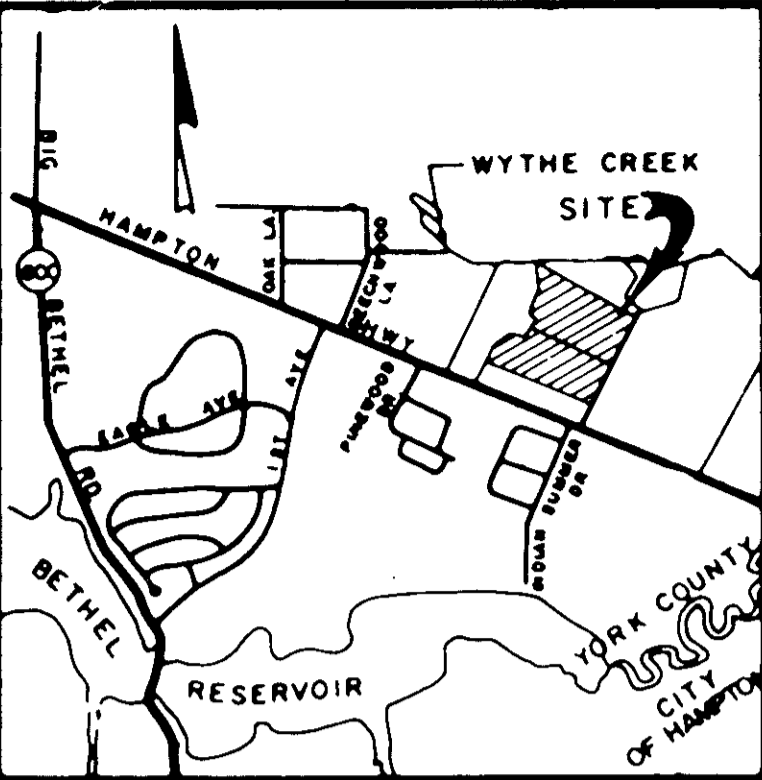
SCALE 1" = 50' DATE: APRIL 5, 1990 SHEET 1 OF 3

TOTAL ACREAGE - 9.960

NOW OR FORMERLY CHRISTOPHER YORK ASSOCIATES, L.P. PHASE 2, SECTION 1

200 VEPCO EASEMENT DB 74 PG 295

PROPOSED VARIABLE WIDTH DRAINAGE & UTILITY EASEMENT



THE PLATTING OF THE LAND HEREON SHOWN IS WITH THE FREE CONSENT AND IN ACCORDANCE WITH THE DESIRE OF THE UNDERSIGNED OWNER. LANDS END ASSOCIATES, A VIRGINIA LIMITED PARTNERSHIP BY P.H.P. ENTERPRISES INC., A VIRGINIA CORPORATION GENERAL PARTNER

BY: P.H.P. ENTERPRISES, INC., GENERAL PARTNER

STATE OF VIRGINIA CITY OF I, KAREN OWEN SMITH A NOTARY PUBLIC IN AND FOR THE CITY AND STATE AFORESAID DO HEREBY CERTIFY THAT THE ABOVE NAMED PERSON WHOSE NAME IS SIGNED TO THE FOREGOING WRITING HAS ACKNOWLEDGED THE SAME BEFORE ME IN MY CITY AND STATE AFORESAID.

GIVEN UNDER MY HAND THIS 18th DAY OF APRIL, 1990

Signature of Karen Owen Smith, Notary Public

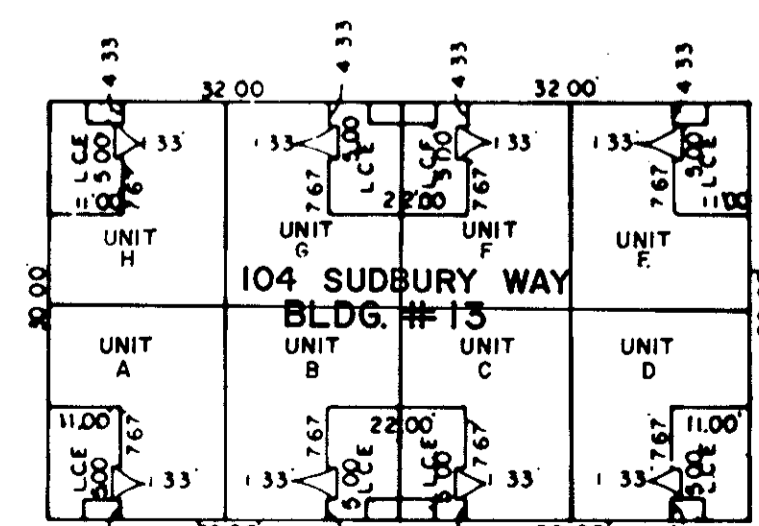
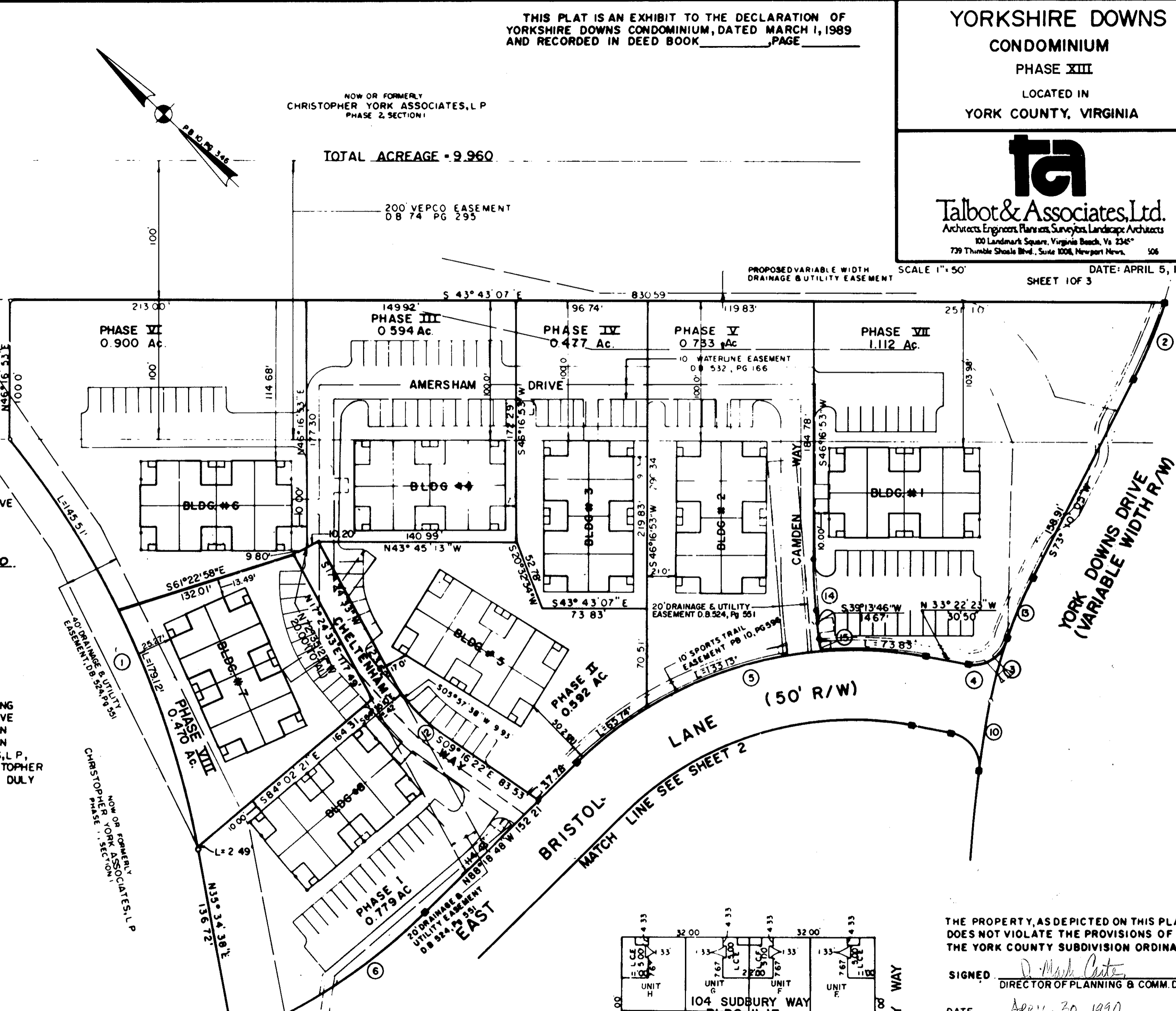
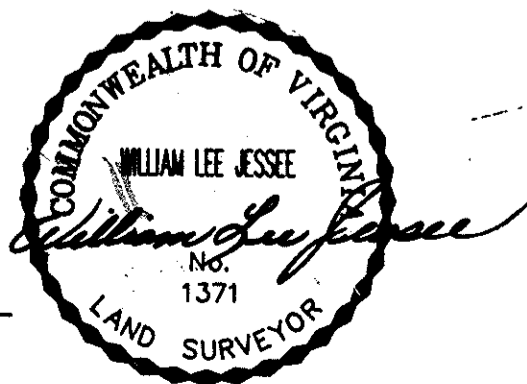
MY COMMISSION EXPIRES: 21 FEB 1993

TO THE BEST OF MY KNOWLEDGE AND BELIEF, ALL THE REQUIREMENTS AS SET FORTH IN THE ORDINANCE FOR APPROVING PLATS OF SUBDIVISION IN THE COUNTY OF YORK, VIRGINIA HAVE BEEN COMPLIED WITH, INCLUDING A CLOSURE OF NOT LESS THAN 1' / 10,000'. THIS IS TO CERTIFY THAT THE LAND EMBRACED IN THIS SUBDIVISION IS IN THE NAME OF LANDS END ASSOCIATES, L.P., A VIRGINIA LIMITED PARTNER AND WAS ACQUIRED FROM CHRISTOPHER YORK ASSOCIATES, L.P. BY DEED DATED DEC 9, 1987 AND DULY RECORDED IN THE CLERK'S OFFICE OF THE CIRCUIT COURT OF THE COUNTY OF YORK, VIRGINIA, IN DEED BOOK 506 PAGE 301

Signature of William Lee-Jessie, Land Surveyor, No. 1371

I, WILLIAM LEE JESSEE, A DULY REGISTERED SURVEYOR DO HEREBY CERTIFY THAT THIS DRAWING IS ACCURATE (WITHIN NORMAL TOLERANCES) AND COMPLIES WITH SECTION 55-79.98(a) OF THE CONDOMINIUM ACT AND THAT THE UNITS SHOWN HEREON ARE SUBSTANTIALLY COMPLETED IN ACCORDANCE HEREWITH.

Signature of William Lee-Jessie, Date 4-16-90



THE PROPERTY, AS DEPICTED ON THIS PLAT DOES NOT VIOLATE THE PROVISIONS OF THE YORK COUNTY SUBDIVISION ORDINANCE.

SIGNED: Director of Planning & Comm. Dev.

DATE: APRIL 30, 1990

Plat Book No. 11 Page 199

Filed in the Clerk's Office, Circuit Court, York Co., Va. the 30th day of April, 1990

Tested: Nancy B. Kane, Clerk

ALL UNITS DEPICTED HEREON ARE SAME UNIT TYPE AS SHOWN ON UNIT DIMENSION PLAN

LCE LIMITED COMMON ELEMENT