

THIS PLAT IS AN EXHIBIT TO THE DECLARATION OF YORKSHIRE DOWNS CONDOMINIUM, DATED MARCH 1, 1988 AND RECORDED IN PLAT BOOK _____, PAGE _____.

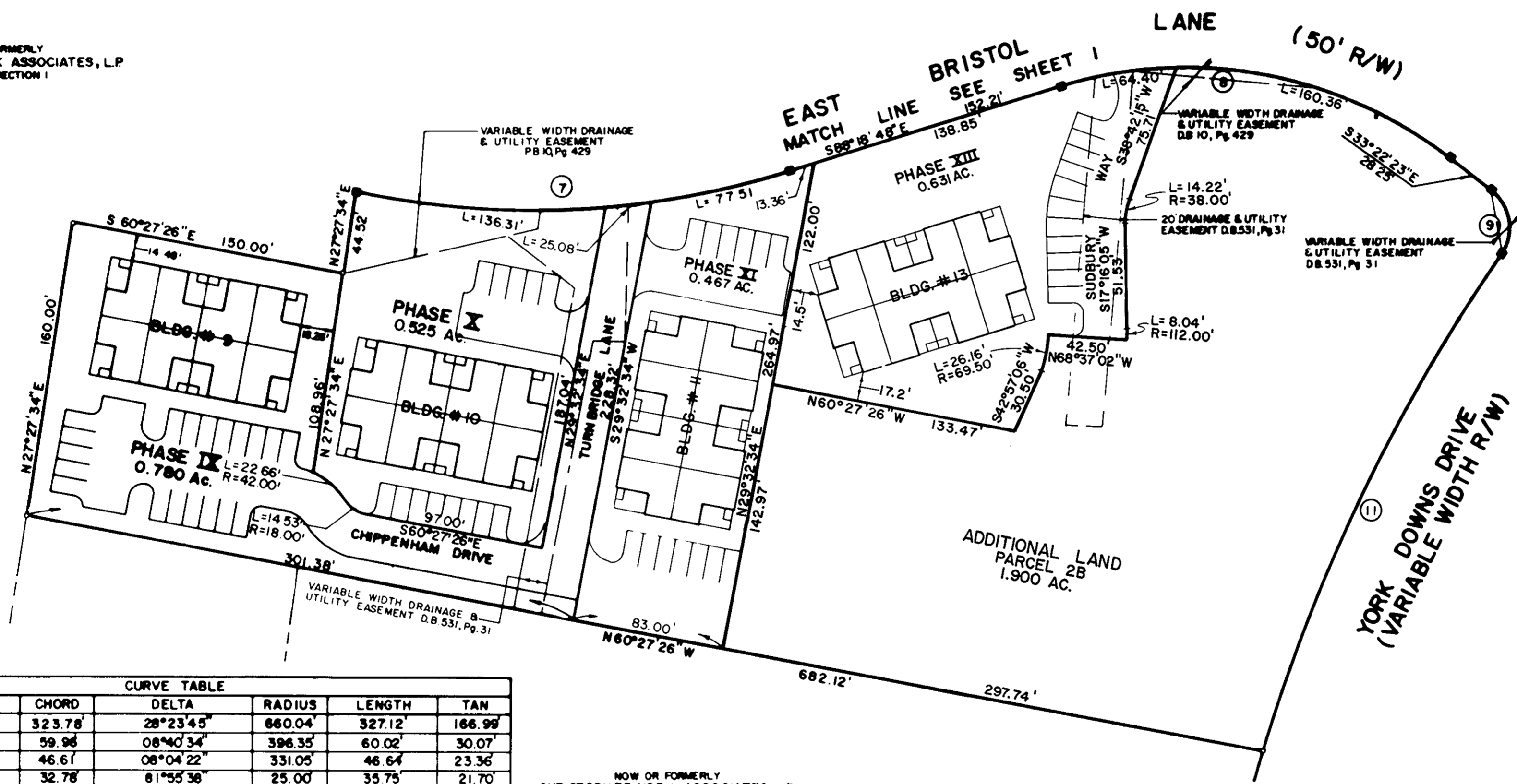
YORKSHIRE DOWNS
CONDOMINIUM
PHASE XIII
 LOCATED IN
 YORK COUNTY, VIRGINIA



Talbot & Associates, Ltd.
 Architects, Engineers, Planners, Surveyors, Landscape Architects
 100 Landmark Square, Virginia Beach, Va. 23462
 730 Thimble Shoals Blvd., Suite 1006, Newport News, Va. 23606

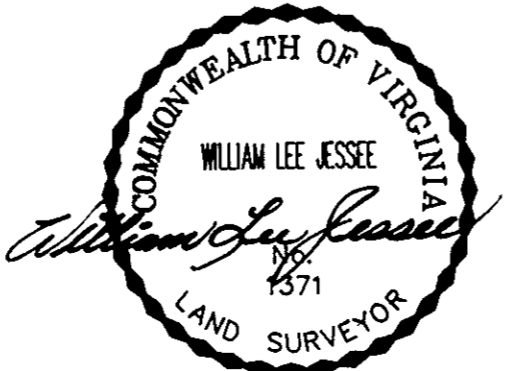
SCALE: 1" = 50' DATE: APRIL 5, 1990
 SHEET 2 OF 3

NOW OR FORMERLY
 CHRISTOPHER YORK ASSOCIATES, L.P.
 PHASE I, SECTION I



CURVE TABLE						
NO.	CH. BEARING	CHORD	DELTA	RADIUS	LENGTH	TAN
CO1	S21°22'45"W	323.78	28°23'45"	660.04	327.12	166.99
CO2	S68°48'48"W	59.96	08°40'34"	396.35	60.02	30.07
CO3	S60°39'48"W	46.61	08°04'22"	331.05	46.64	23.36
CO4	S74°20'12"E	32.78	81°55'38"	25.00	35.75	21.70
CO5	S60°50'35"E	262.37	54°56'24"	284.39	272.70	147.86
CO6	S76°59'37"E	164.88	22°38'22"	420.00	165.96	84.07
CO7	S73°45'06"E	236.33	29°07'25"	470.00	238.90	122.09
CO8	S60°50'38"E	216.24	54°56'24"	234.39	224.76	121.86
CO9	S10°09'49"W	34.44	87°04'25"	25.00	37.99	23.75
CO10	S55°09'49"W	48.74	02°55'35"	954.40	48.75	24.38
CO11	S44°46'08"W	296.36	17°51'49"	954.40	297.56	150.00
CO12	S01°39'19"E	32.50	15°14'07"	122.60	32.60	16.39
CO13	S68°56'02"W	48.69	08°28'06"	331.05	48.93	24.51

NOW OR FORMERLY
 CHRISTOPHER YORK ASSOCIATES, L.P.
 PARCEL 'C'



I WILLIAM LEE JESSE, A DULY REGISTERED SURVEYOR DO HEREBY CERTIFY THAT THIS DRAWING IS ACCURATE (WITHIN NORMAL TOLERANCES) AND COMPLIES WITH SECTION 58-79.58(a) OF THE CONDOMINIUM ACT AND THAT THE UNITS SHOWN HEREON ARE SUBSTANTIALLY COMPLETED IN ACCORDANCE HERewith.

William Lee Jesse, DATE 4-16-90

Plat Book No. 11 Page 200

Filed in the Clerk's Office, Circuit Court, York Co., Va. on the 30th day of April 1990.
 Nancy B. Kane, Clerk
Nancy B. Kane
 NANCY B. KANE, CLERK