

THE UNDERSIGNED CERTIFIES THAT THIS PLAN IS ACCURATE AND COMPLIES WITH THE PROVISIONS OF THE CODE OF VIRGINIA SECTION 55-79.58 (b) AND ALL UNITS DEPICTED HEREON HAVE BEEN SUBSTANTIALLY COMPLETED.

NOTES:

1. ALL BUILDING DIMENSIONS SHOWN HEREON ARE EXTERIOR DIMENSIONS AND ARE IN FEET.

STATE OF VIRGINIA

COUNTY OF YORK

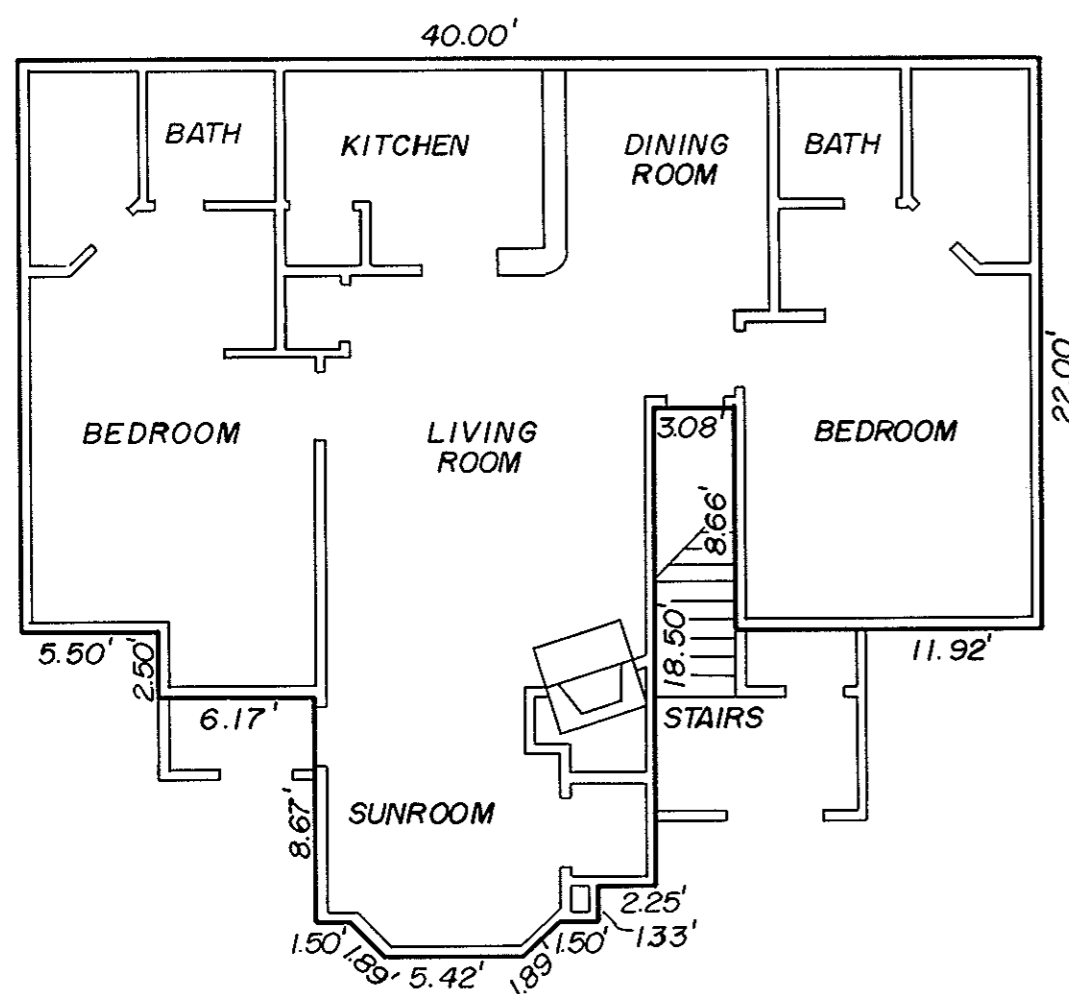
IN THE CLERK'S OFFICE OF THE CIRCUIT COURT FOR THE COUNTY OF YORK THE 25<sup>th</sup> DAY OF May, 1990 THIS MAP WAS PRESENTED AND ADMITTED TO RECORD AS THE LAW DIRECTS IN PLAT BOOK 11, PAGE 206 12:11 PM

SIGNED: Kenton B. Patrick DATE: 4/16/90  
KENTON B. PATRICK, P. E.

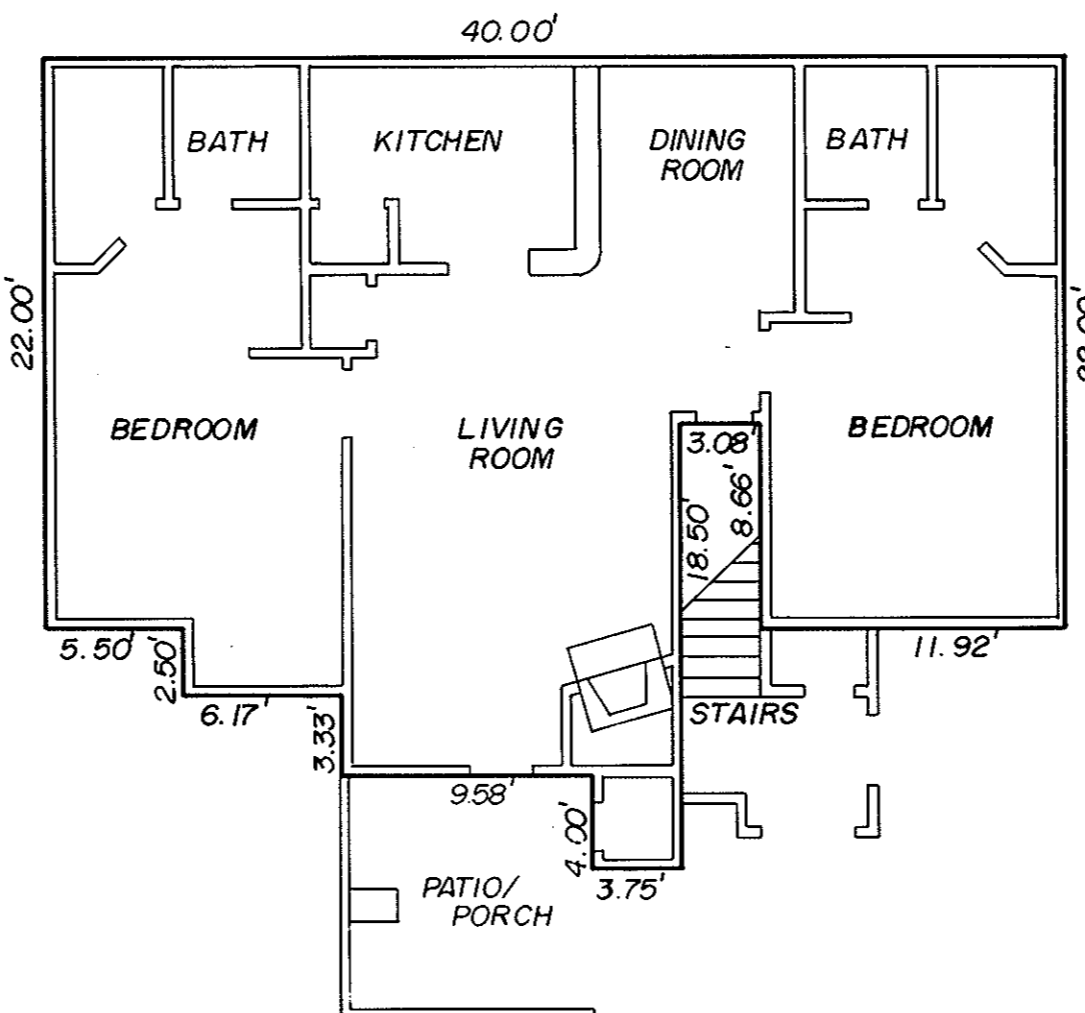


TESTE NANCY B. KANE, CLERK  
CLERK

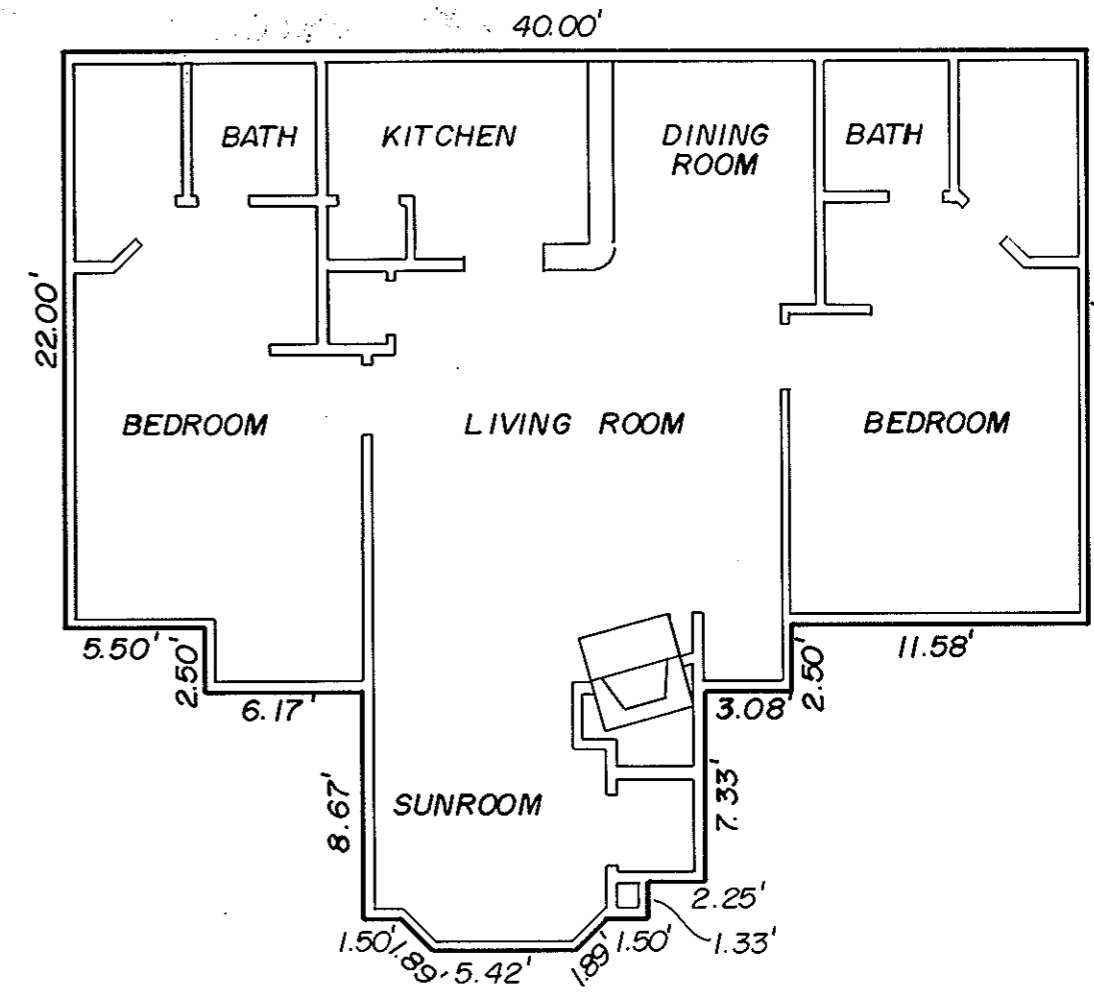
BY: Karen D. Kelly Watkins, DC



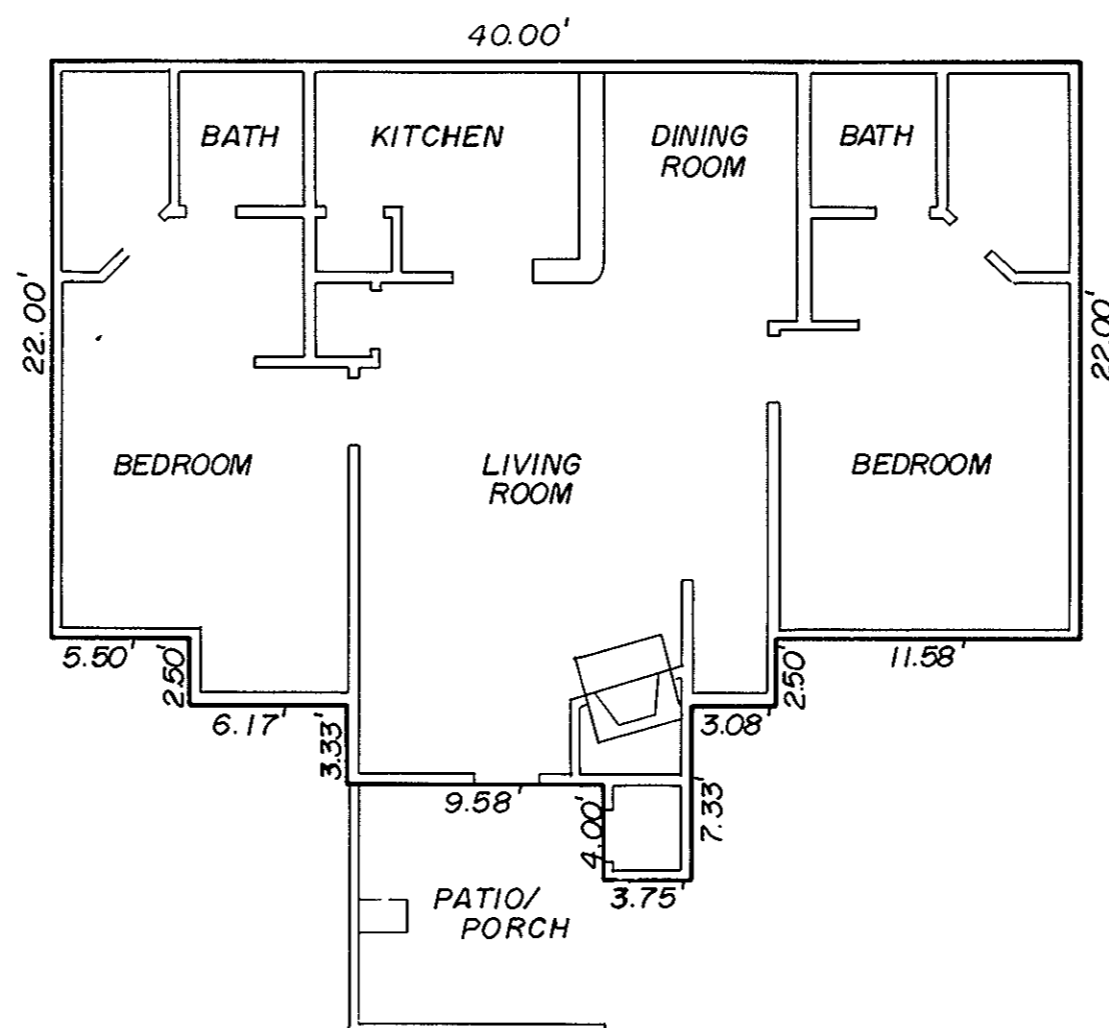
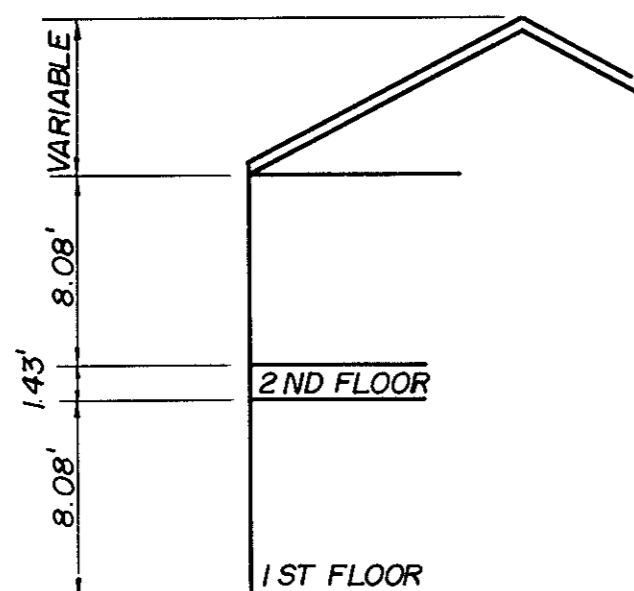
MODEL D - TYPICAL UNITS A, C & E  
1ST FLOOR  
W/SUNROOM



MODEL D - TYPICAL UNITS B, D & F  
1ST FLOOR  
W/PATIO



MODEL D - TYPICAL UNITS G, H, I & K  
2ND FLOOR  
W/SUNROOM



MODEL D - TYPICAL UNITS J & L  
2ND FLOOR W/PORCH

EXHIBIT  
PHASE XI  
SHEET 2 OF 4  
PLAT OF  
WILLIAMSBURG COMMONS CONDOMINIUMS  
FOR  
WILLIAMSBURG COMMONS, INC.,  
A VIRGINIA CORPORATION  
BRUTON DISTRICT COUNTY OF YORK, VIRGINIA  
SCALE: 1/8" = 1'-0" APRIL 4, 1990



THE SIRINE GROUP, LTD.  
SURVEYORS • ENGINEERS • PLANNERS  
P. O. BOX 450 ROUTE 17  
WHITE MARSH, VIRGINIA  
23183