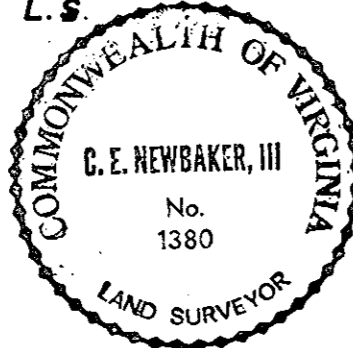


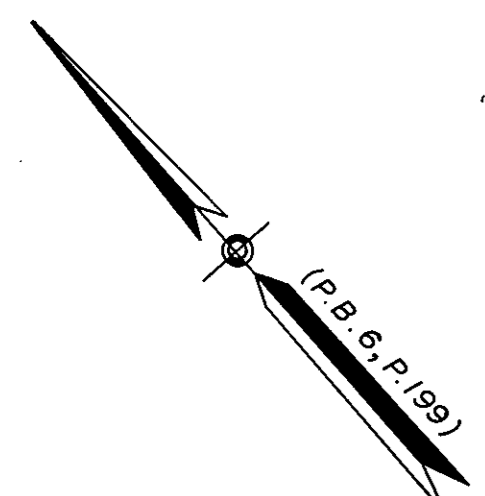
THE UNDERSIGNED CERTIFIES THAT THIS PLAN IS ACCURATE AND COMPLIES WITH THE PROVISIONS OF THE CODE OF VIRGINIA SECTION 55-79.58 (b) AND ALL UNITS DEPICTED HEREON HAVE BEEN SUBSTANTIALLY COMPLETED.

SIGNED: *C. E. Newbaker III* DATE: 6-28-90
C. E. NEWBAKER III, L.S.



NOTES:

I. ALL BUILDING DIMENSIONS SHOWN HEREON ARE EXTERIOR DIMENSIONS AND ARE IN FEET
PARCEL B = 17.630 ACRES

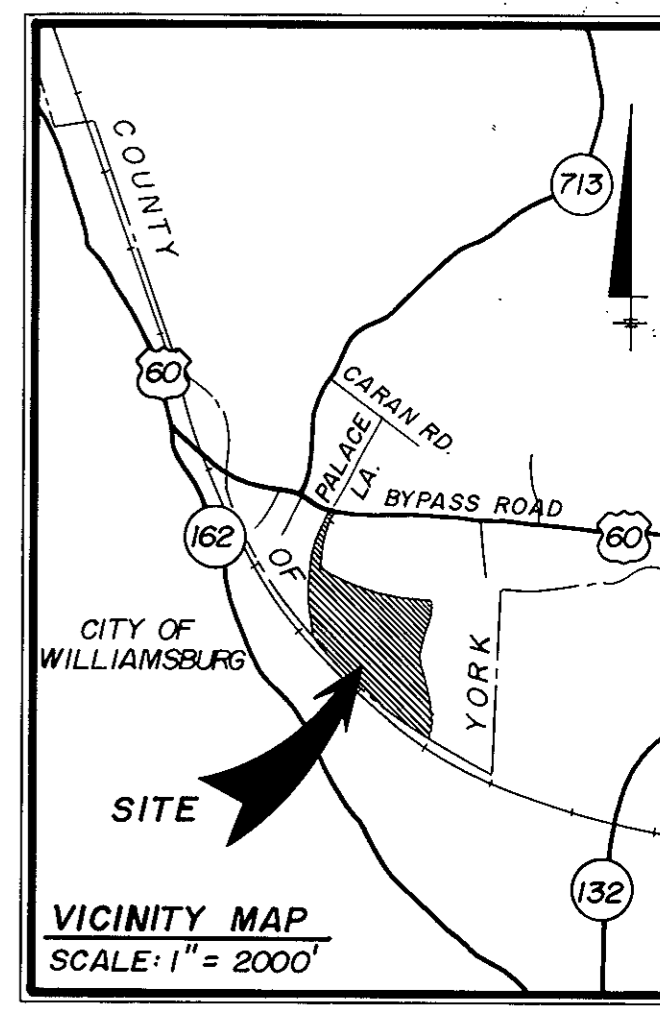


STATE OF VIRGINIA
COUNTY OF YORK

IN THE CLERK'S OFFICE OF THE CIRCUIT COURT FOR THE COUNTY OF YORK THE 29 DAY OF June, 1990 THIS MAP WAS PRESENTED AND ADMITTED TO RECORD AS THE LAW DIRECTS IN PLAT BOOK 11, PAGE 217.

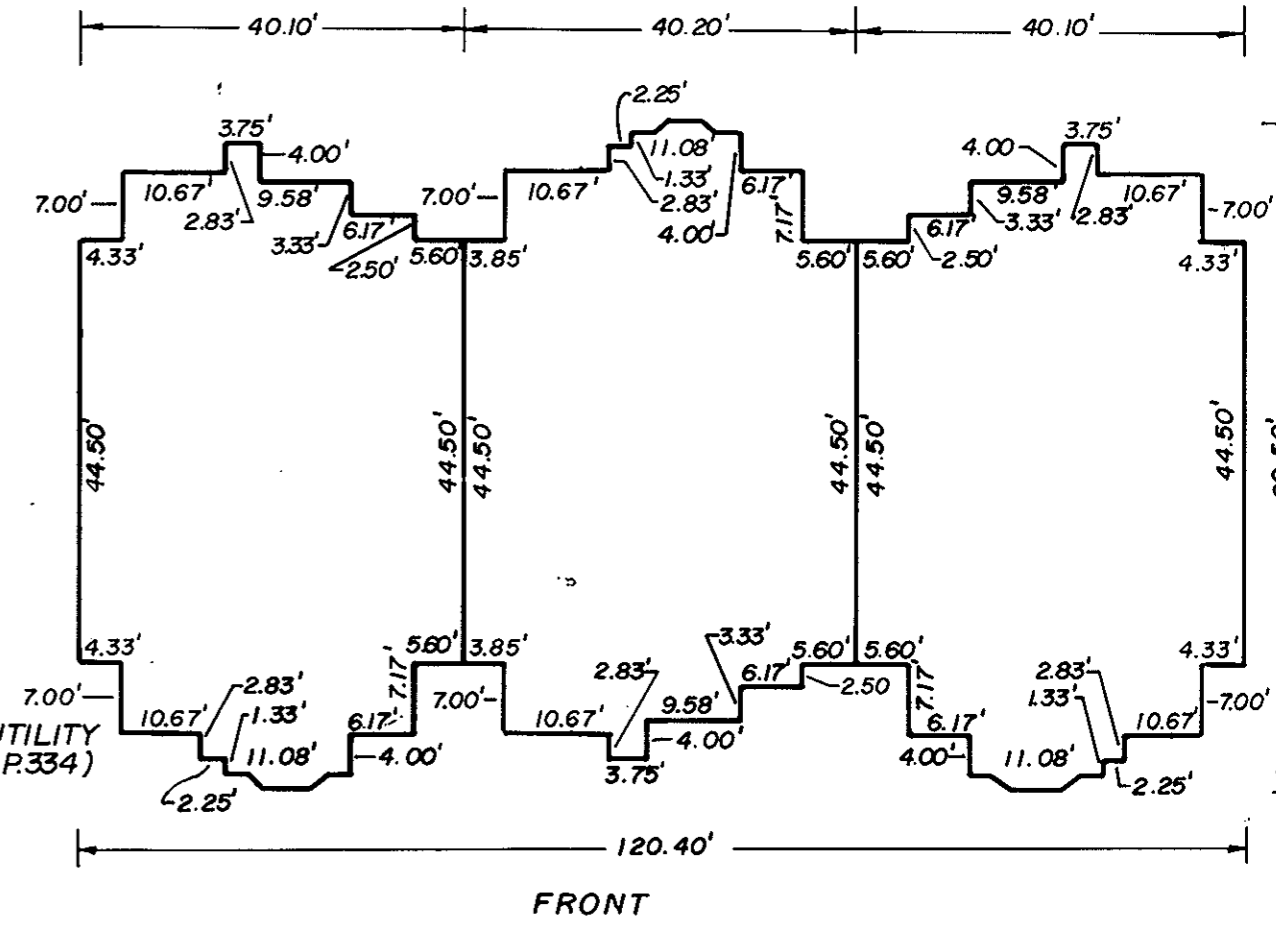
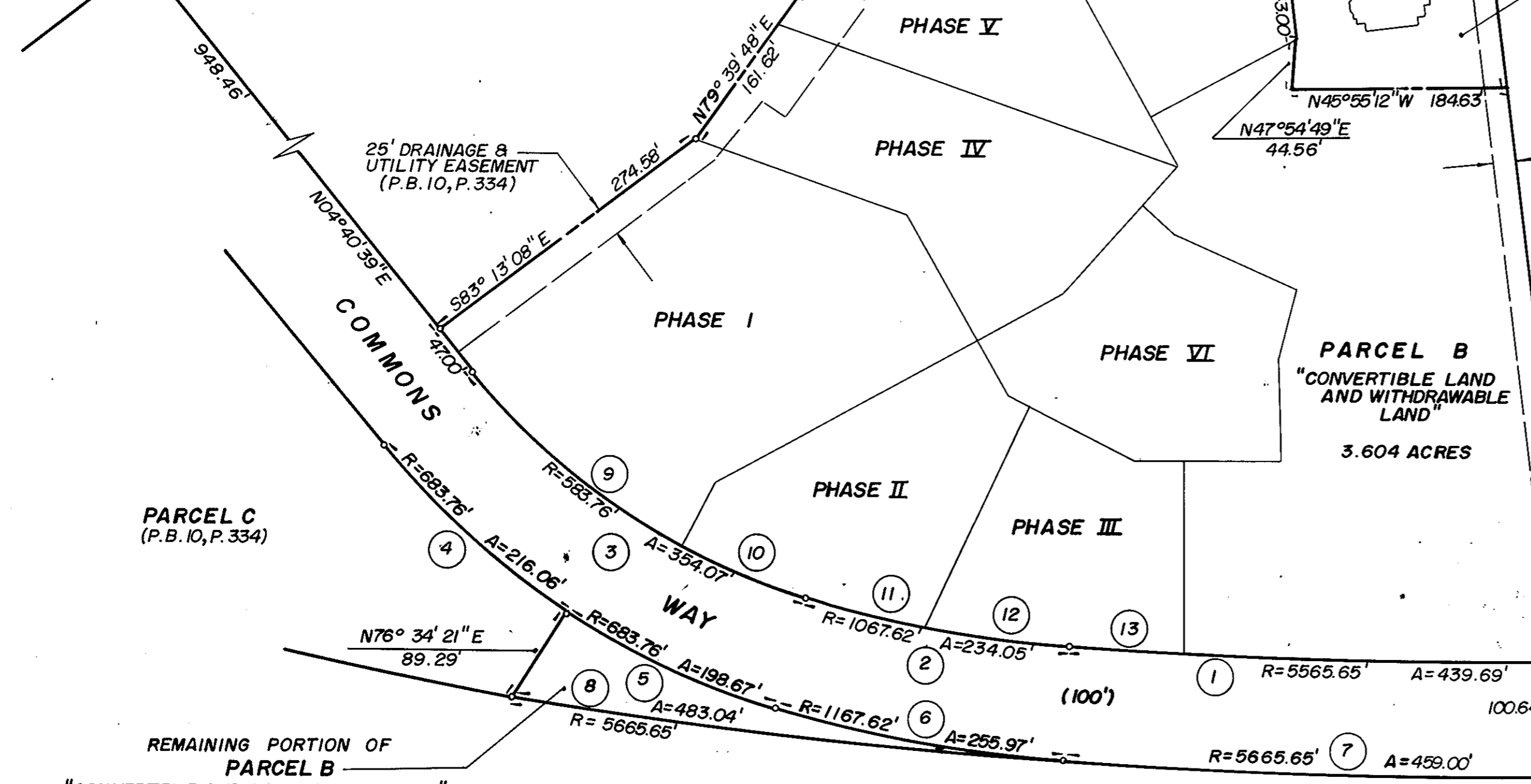
TESTE: *Nancy C. ...*
CLERK

BY: *Carol D. ...*
11:24 A.M.



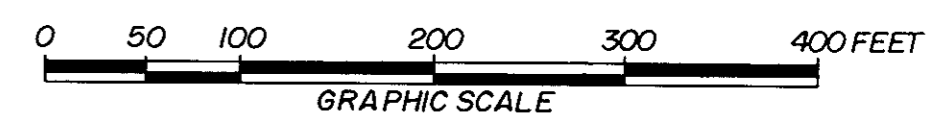
CURVE DATA TABLE				
NO.	RADIUS	DELTA	TANGENT	ARC
1	5565.65'	04° 31' 35"	219.96'	439.69'
2	1067.62'	12° 33' 39"	117.50'	234.05'
3	583.76'	34° 45' 06"	182.67'	354.07'
4	683.76'	18° 06' 16"	108.94'	216.06'
5	683.76'	16° 38' 48"	100.03'	198.67'
6	1167.62'	12° 33' 39"	128.50'	255.97'
7	5665.65'	04° 38' 30"	229.62'	459.00'
8	5665.65'	04° 53' 06"	241.67'	483.04'
9	583.76'	22° 51' 55"	118.05'	232.97'
10	583.76'	11° 53' 11"	60.77'	121.11'
11	1067.62'	05° 32' 25"	51.66'	103.23'
12	1067.62'	07° 01' 14"	65.49'	130.82'
13	5565.65'	00° 55' 36"	45.00'	90.00'

U.S. ROUTE 60 BYPASS ROAD
(VARIABLE WIDTH)



AS DEPICTED ON THIS PLAN...
J. Mark Carter
June 28, 1990

EXHIBIT M
PHASE XII
SHEET 1 OF 4
PLAT OF
WILLIAMSBURG COMMONS CONDOMINIUMS
FOR
WILLIAMSBURG COMMONS, INC.
A VIRGINIA CORPORATION
BRUTON DISTRICT COUNTY OF YORK, VIRGINIA
SCALE: 1" = 100' June 27, 1990



THE SIRINE GROUP, LTD.
SURVEYORS • ENGINEERS • PLANNERS
P.O. BOX 450, ROUTE 17
WHITE MARSH, VIRGINIA
23183

CHESAPEAKE AND OHIO RAILROAD