

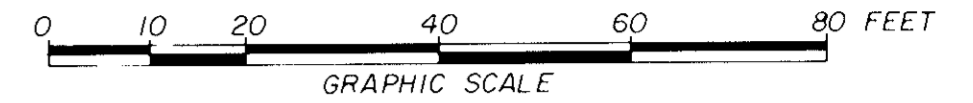
BURNT BRIDGE RUN CONDOMINIUMS

PHASE SIXTEEN

GRAFTON DISTRICT COUNTY OF YORK, VIRGINIA

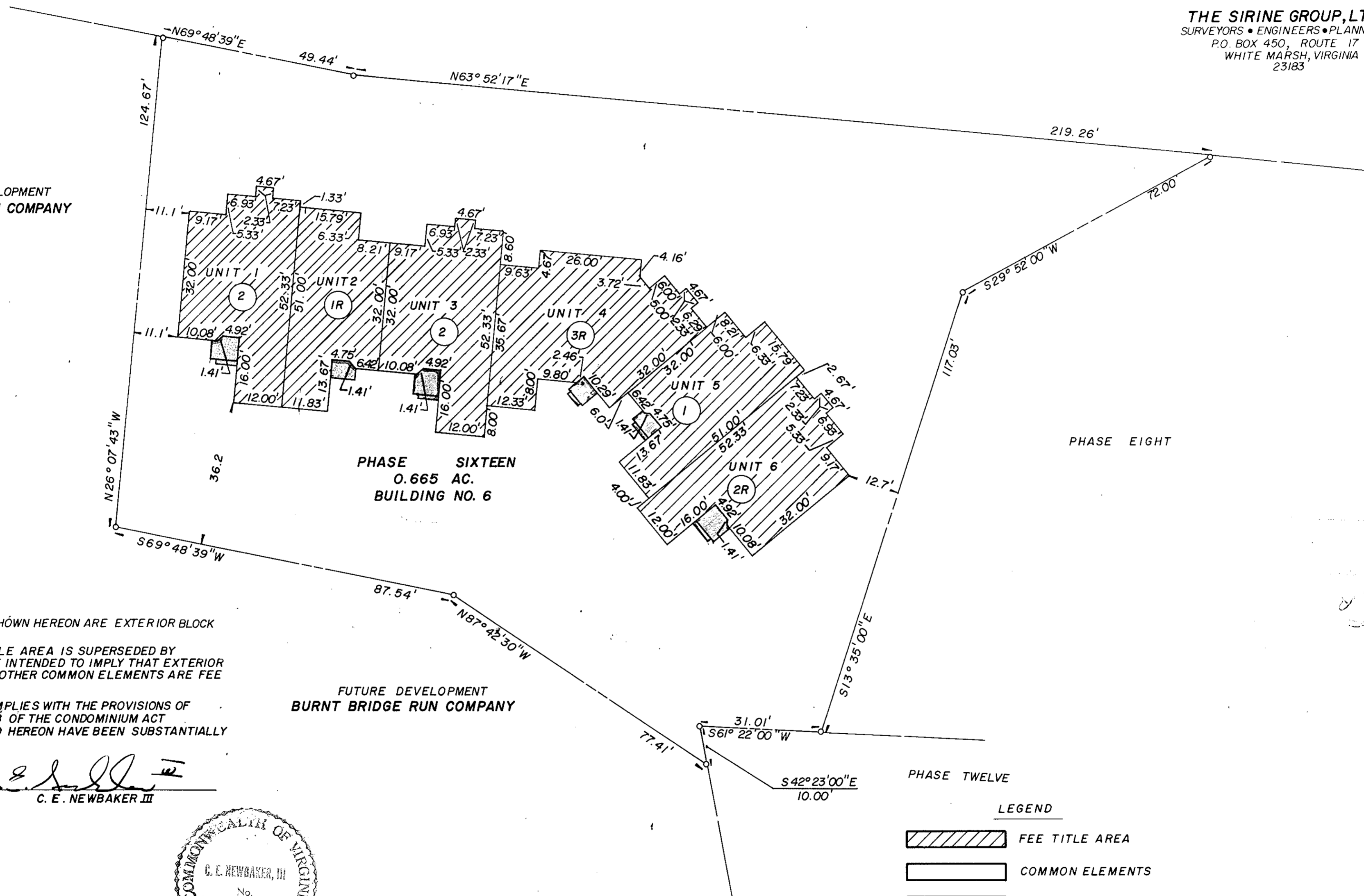
SCALE: 1" = 20' JULY 19, 1990

NOW OR FORMERLY
MARY HARRIS ESTATE



THE SIRINE GROUP, LTD.
 SURVEYORS • ENGINEERS • PLANNERS
 P.O. BOX 450, ROUTE 17
 WHITE MARSH, VIRGINIA
 23183

FUTURE DEVELOPMENT
BURNT BRIDGE RUN COMPANY



PHASE EIGHT

PHASE SIXTEEN
0.665 AC.
BUILDING NO. 6

FUTURE DEVELOPMENT
BURNT BRIDGE RUN COMPANY

PHASE TWELVE

LEGEND

	FEE TITLE AREA
	COMMON ELEMENTS
	LIMITED COMMON ELEMENTS
	LIMIT OF AREA OR ELEMENTS

- NOTES:**
- ALL BUILDING DIMENSIONS SHOWN HEREON ARE EXTERIOR BLOCK DIMENSIONS AND ARE IN FEET.
 - THE DESIGNATION OF FEE TITLE AREA IS SUPERSEDED BY THE DECLARATION AND IS NOT INTENDED TO IMPLY THAT EXTERIOR WALLS, BEARING WALLS AND OTHER COMMON ELEMENTS ARE FEE TITLE AREA.
 - I CERTIFY THAT THIS PLAT COMPLIES WITH THE PROVISIONS OF SUBSECTION (a) OF 55-79.58 OF THE CONDOMINIUM ACT AND THAT ALL UNITS DEPICTED HEREON HAVE BEEN SUBSTANTIALLY COMPLETED.

SIGNED:
 C. E. NEWBAKER III



[Handwritten signature]
 2017-18, 1990

Plot Book No. 11 Page 246
 2011 September 11:09 am
[Handwritten signature]