

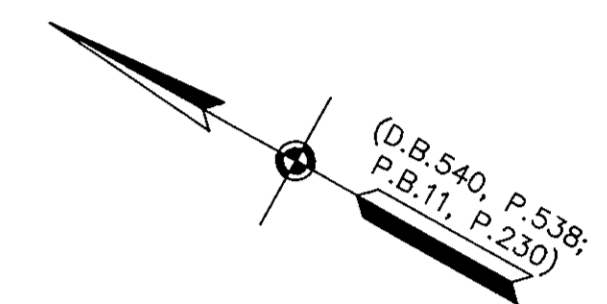
CURVE TABLE

NO.	RADIUS	DELTA	ARC	TANGENT	CHORD	CHORD BRG.
1	3455.80'	03°59'40"	240.93'	120.51'	240.88'	S27°46'14"E
2	25.00'	90°00'00"	39.27'	25.00'	35.36'	N74°46'11"W
3	873.59'	01°29'09"	22.66'	11.33'	22.66'	S59°29'14"W
4	25.00'	88°30'51"	38.62'	24.36'	34.89'	S14°29'14"W
5	25.00'	98°15'58"	42.88'	28.90'	37.81'	N78°54'10"W
6	873.59'	15°15'25"	232.62'	117.00'	231.94'	S44°20'08"W
7	302.44'	55°42'45"	294.08'	159.84'	282.63'	S08°51'04"W
8	25.00'	60°47'14"	26.52'	14.66'	25.30'	S49°23'56"E
9	60.00'	287°28'11"	301.04'	-	-	-
10	25.00'	48°33'25"	21.19'	11.28'	20.56'	N03°23'56"E
11	352.44'	57°35'13"	354.23'	193.70'	339.51'	N07°54'50"E
12	25.00'	90°00'00"	39.27'	25.00'	35.36'	N08°17'34"W
13	25.00'	90°00'00"	39.27'	25.00'	35.36'	S81°42'26"W
14	25.00'	90°00'00"	39.27'	25.00'	35.36'	S08°17'34"E
15	25.00'	90°00'00"	39.27'	25.00'	35.36'	N81°42'26"E
16	923.59'	23°31'23"	379.18'	192.30'	376.53'	N48°28'08"E
17	25.00'	89°38'18"	39.11'	24.84'	35.24'	N15°24'40"E

SHEET 2 OF 2
SUBDIVISION PLAT
OF
COOPERS LANDING

NELSON DISTRICT - COUNTY OF YORK, VIRGINIA
SCALE: 1" = 60' JULY, 1990
0 30 60 120 180 240 FEET
GRAPHIC SCALE

THE SIRINE GROUP, LTD.
SURVEYORS • ENGINEERS • PLANNERS
P.O. BOX 450, ROUTE 17
WHITE MARSH, VIRGINIA 23183



SHEET 1

PARCEL # 2
NOW OR FORMERLY
ERNEST D. LEMONDS, JR.
(D.B.485, P.355; D.B.248, P.17)

PROPOSED 20' DRAINAGE &
UTILITY EASEMENT TO BE
CONVEYED TO YORK COUNTY

EXISTING YORK COUNTY
16' UTILITIES &
DRAINAGE EASEMENT
(P.B.9, P.207)

NOW OR FORMERLY
CLYDE R. ROYALS
(D.B.76, P.462)

APPROVED:
YORK COUNTY BOARD OF SUPERVISORS

BY: *J. Made Carter*
PLAT APPROVING AGENT

DATE: *October 17, 1990*

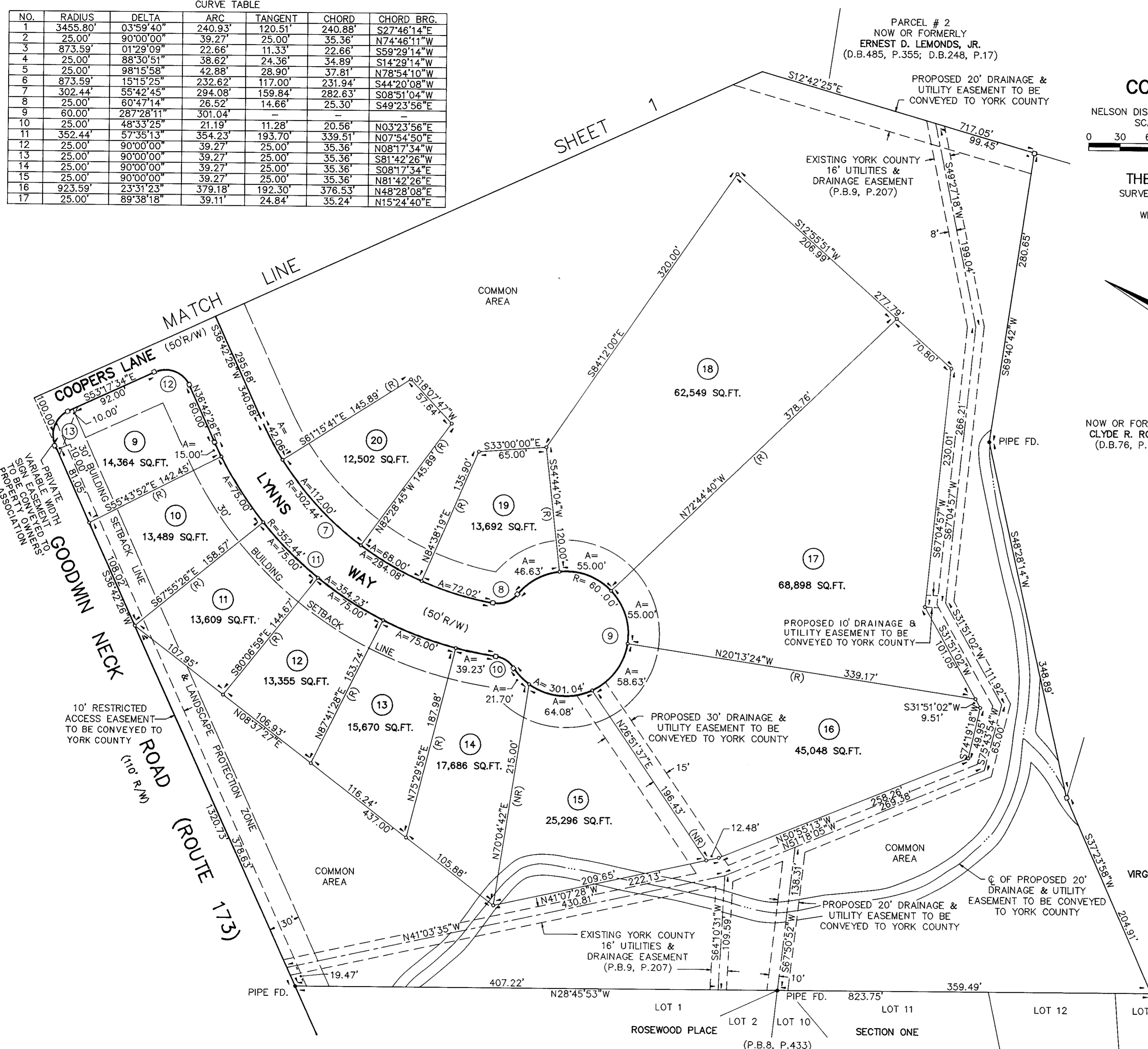
STATE OF VIRGINIA
COUNTY OF YORK
IN THE CLERK'S OFFICE OF THE CIRCUIT COURT FOR
THE COUNTY OF YORK THE *17* DAY OF *October*,
1990 THIS PLAT WAS PRESENTED AND ADMITTED TO
RECORD AS THE LAW DIRECTS IN PLAT BOOK *11*,
PAGE *251*.

TESTE: NANCY B. KANE, CLERK
CLERK

BY: *Carol Drossbach, A.C.*
9:31 a.m.

NOW OR FORMERLY
VIRGINIA ELECTRIC AND POWER COMPANY,
A VIRGINIA CORPORATION
(D.B.487, P.321)

PROPERTY IS TAX MAP 24-6, PARCEL 257.
THIS PLAT IS BASED ON A CURRENT FIELD SURVEY.



LOT 1
ROSEWOOD PLACE
(P.B.8, P.433)

LOT 2

LOT 10

LOT 11

SECTION ONE

LOT 12

LOT 13