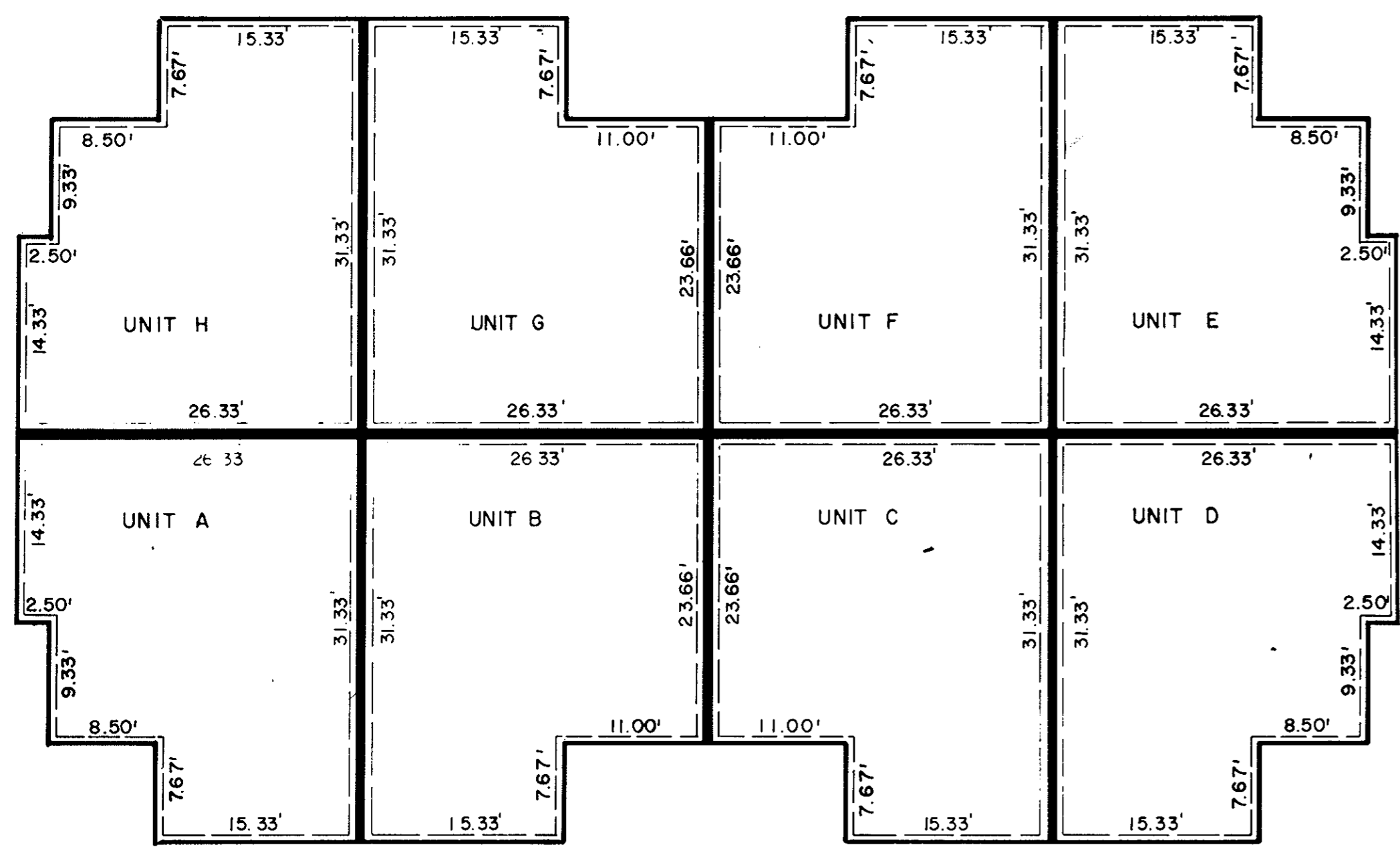


# YORKSHIRE DOWNS CONDOMINIUM UNIT DIMENSION PLAN PHASE XIV

**Talbot & Associates, Ltd.**  
Architects, Engineers, Planners, Surveyors, Landscape Architects  
100 Landmark Square, Virginia Beach, Va. 23452  
739 Thimble Shoals Blvd., Suite 1006, Newport News, Va. 23606

SCALE: AS SHOWN DATE: APRIL 5, 1990

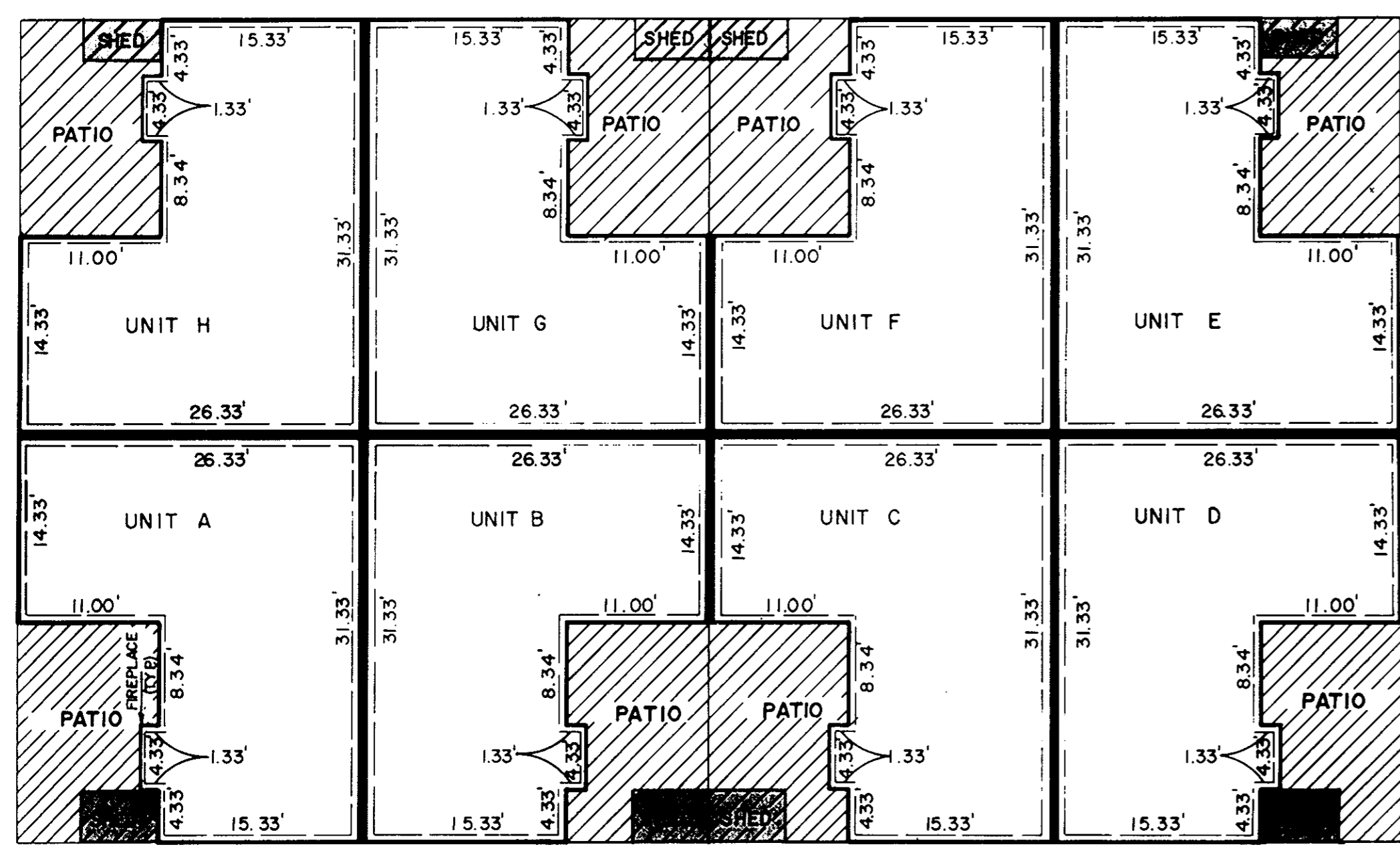
SHEET 3 OF 3



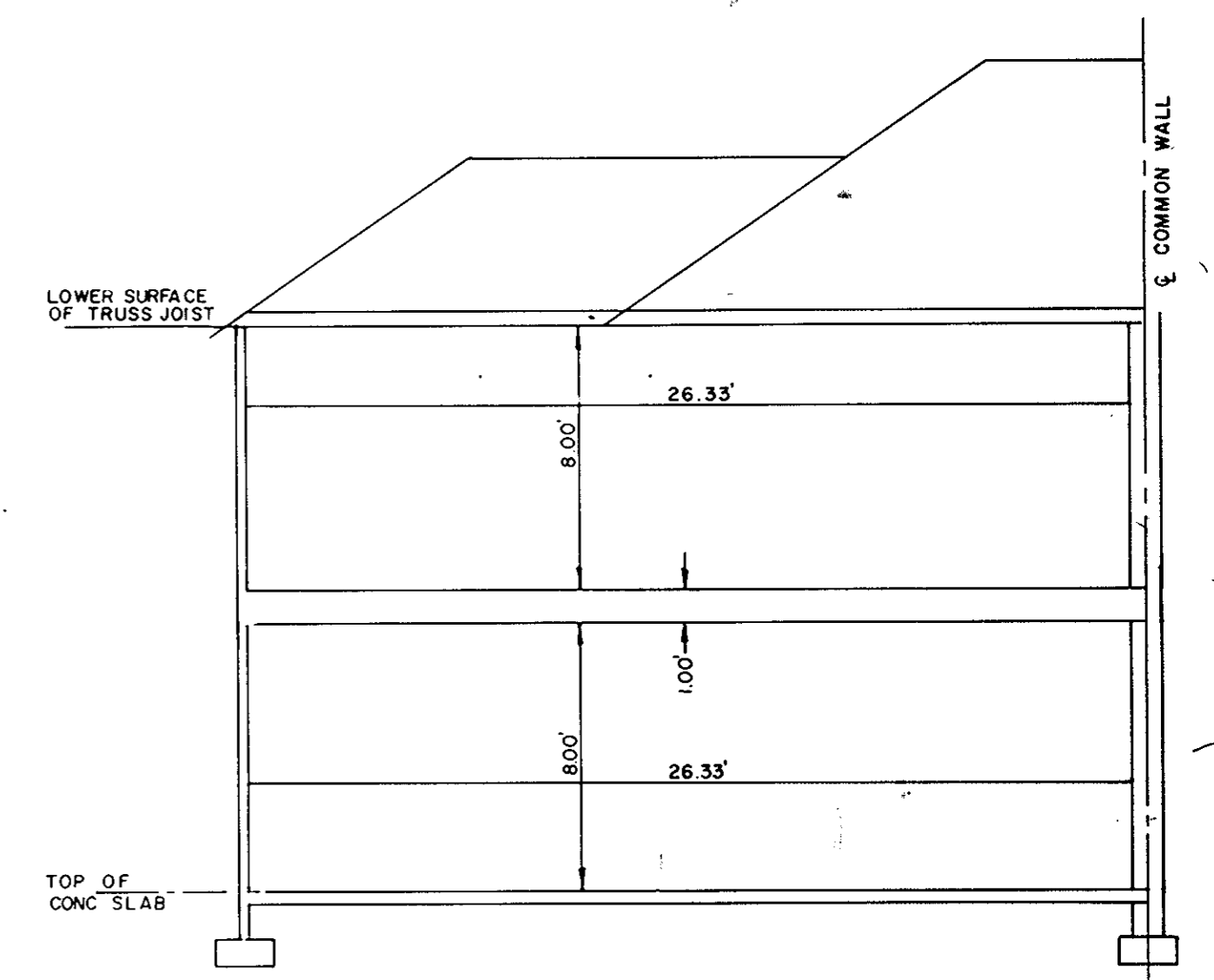
SECOND FLOOR PLAN  
1"=10'

LIMITED COMMON ELEMENT

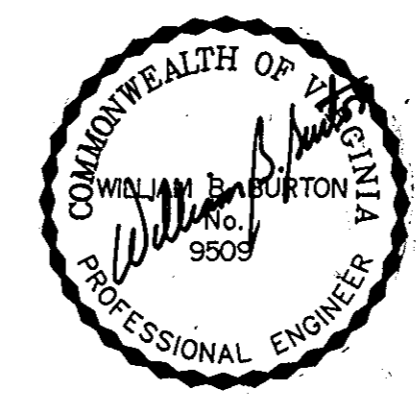
NOTE:  
SECTIONAL VIEWS OF UNITS AND ALL UNIT DIMENSIONS WERE OBTAINED FROM THE ARCHITECTURAL PLANS OF RICHARD LEE GRIMSTEAD, A REGISTERED ARCHITECT WITH THE COMMONWEALTH OF VIRGINIA.



FIRST FLOOR PLAN  
1"=10'



TYPICAL SECTION  
SCALE: 1"=5'



I, WILLIAM B. BURTON, A DULY REGISTERED ENGINEER, DO HEREBY CERTIFY THAT THIS DRAWING IS ACCURATE (WITHIN NORMAL TOLERANCES) AND COMPLIES WITH SECT: ON 55-79.58(b) OF THE CONDOMINIUM ACT AND THAT THE UNITS SHOWN HEREON ARE SUBSTANTIALLY COMPLETED IN ACCORDANCE HEREWITH.

*William B. Burton*, DATE 10/31/90

PROJECT NO: 872217  
FILE NO: 872217