

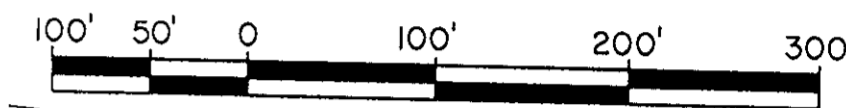
PLAT SHOWING
RIGHT-OF-WAY DEDICATION
FOR
KILN CREEK PARKWAY
PHASE 6



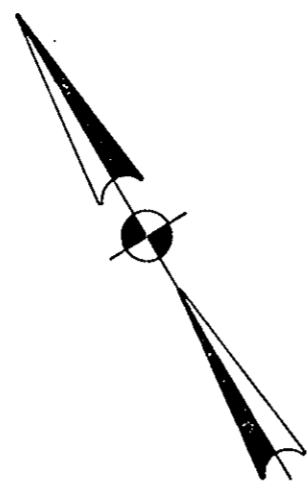
Virginia Beach, Va. • Newport News, Va. • Suffolk, Va.

SCALE: 1" = 100'
SHEET 2 OF 2

DATE: 10/1/90



GRAPHIC SCALE: 1" = 100'



SINGLE FAMILY - 6

PT. STA. 59+4481

10' DRAINAGE & UTILITY
EASEMENT HEREBY
DEDICATED TO YORK
COUNTY

STA. 56+0000
PHASE 6

FUTURE KILN CREEK
PARKWAY 90' R/W
PHASE 7

20' EASEMENT FOR LANDSCAPING
UTILITIES, IRRIGATION & DRAINAGE IS
RESERVED BY KILN CREEK
ASSOCIATES, A VIRGINIA GENERAL
PARTNERSHIP.

VARIABLE WIDTH DRAINAGE &
UTILITY EASEMENT HEREBY DED-
ICATED TO YORK COUNTY

MATCH LINE - SEE SHEET 1
STA. 69+3015

10' WATERLINE EASEMENT HEREBY
DEDICATED TO THE CITY OF
NEWPORT NEWS

SINGLE FAMILY - 5

PUMP
STATION
NO. 4
.230 AC.
100.00

PUMP STATION LOT
HEREBY DEDICATED TO YORK COUNTY

15' DRAINAGE & UTILITY
EASEMENT HEREBY
DEDICATED TO YORK
COUNTY

20' BIKE PATH AND PEDESTRIAN EASEMENT
RESERVED BY KILN CREEK ASSOCIATES, A
VIRGINIA GENERAL PARTNERSHIP.

10' WATERLINE EASEMENT HEREBY
DEDICATED TO THE CITY OF NEWPORT NEWS

PARKWAY

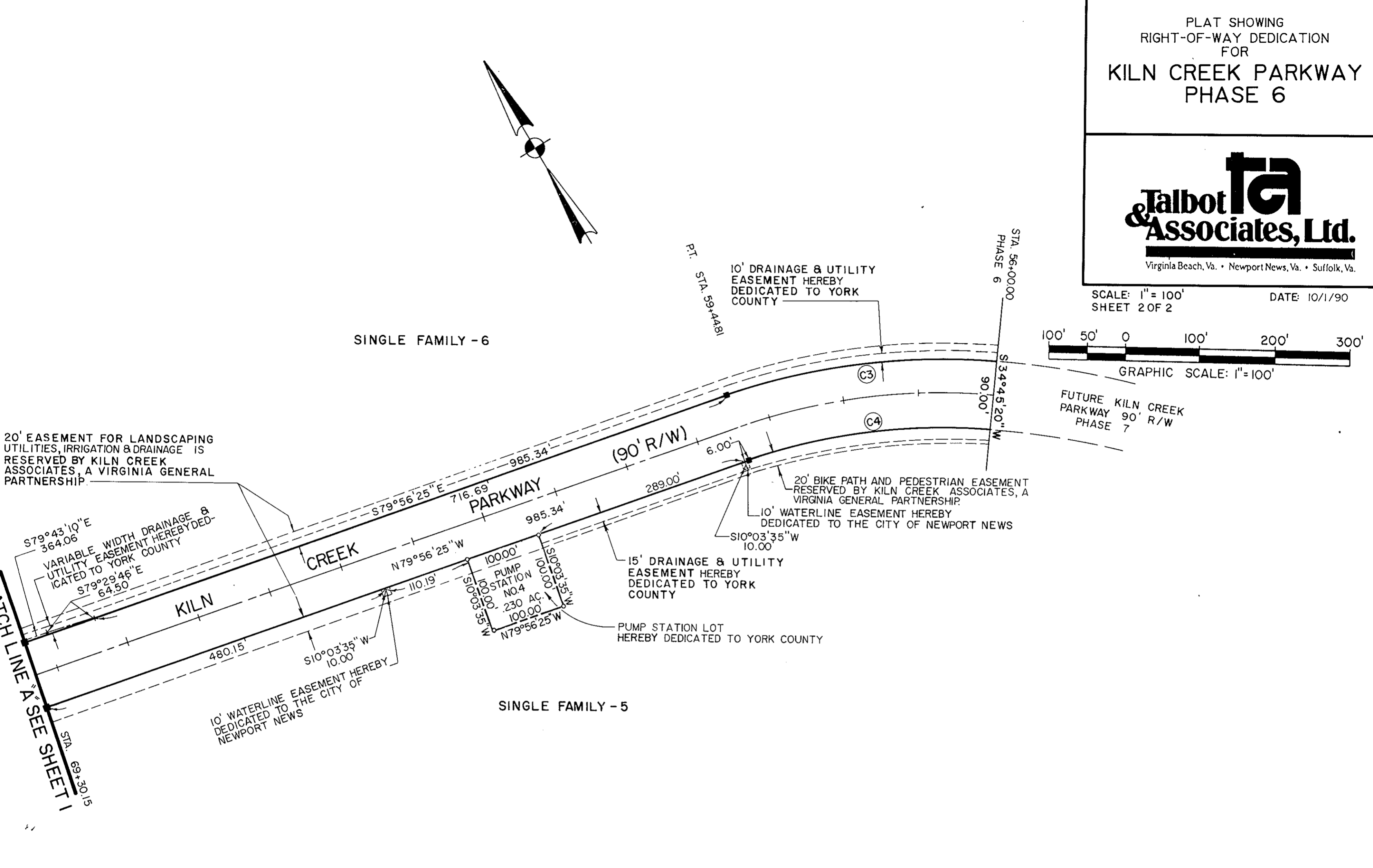
(90' R/W)

CREEK

KILN

(C3)

(C4)



APPROVED:
YORK COUNTY BOARD OF SUPERVISORS

BY: J. Mark Carter
PLAT APPROVING AGENT

DATE: FEBRUARY 19, 1991

STATE OF VIRGINIA
COUNTY OF YORK
IN THE CLERK'S OFFICE OF THE CIRCUIT
COURT FOR THE COUNTY OF YORK THE 21st
DAY OF February, 1991 THIS MAP WAS
PRESENTED AND ADMITTED TO RECORD AS THE
LAW DIRECTS IN PLAT BOOK 11, PAGE 285

TESTE: NANCY B. KANE, CLERK
CLERK

BY: Carol D. Marshall, D.C.

4:09 P.M.