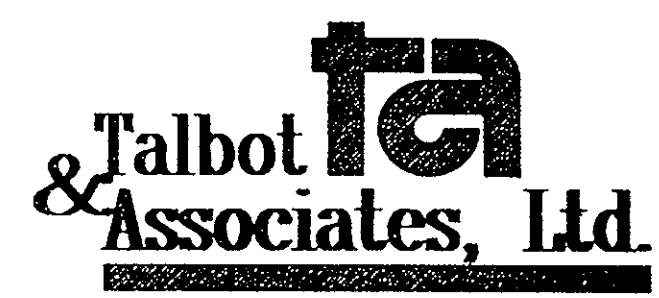
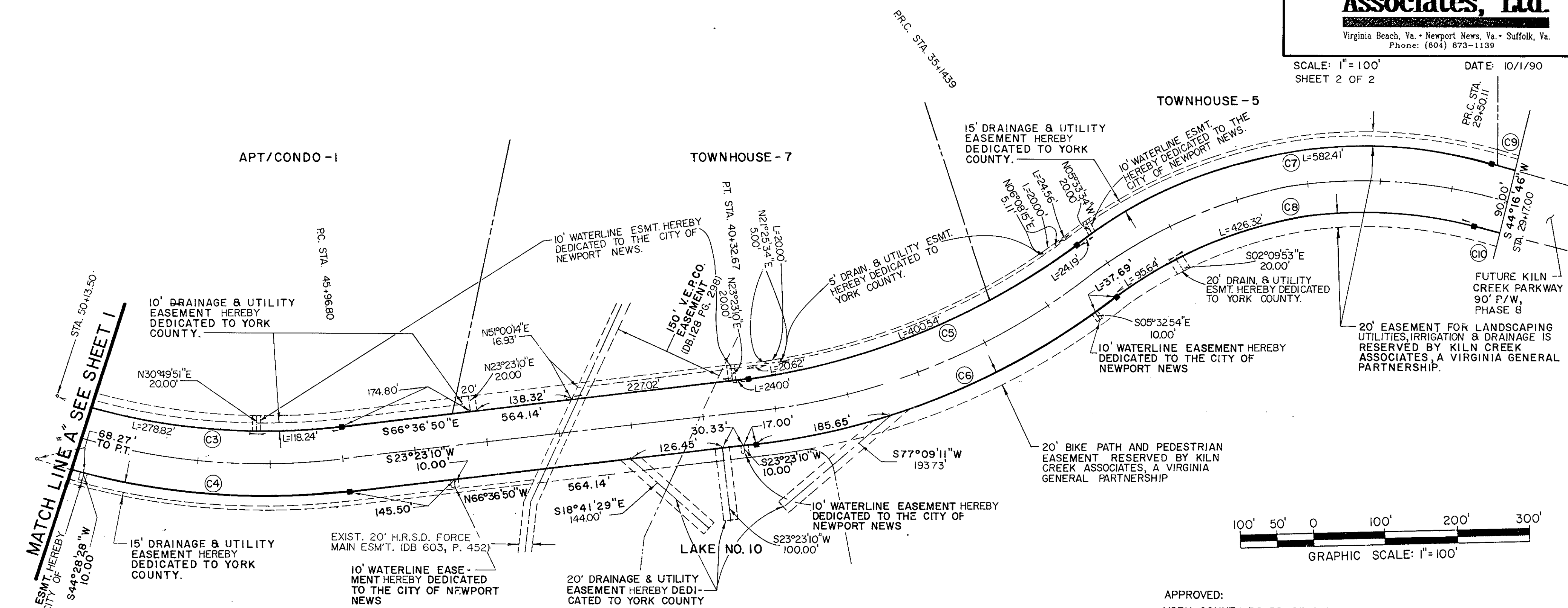
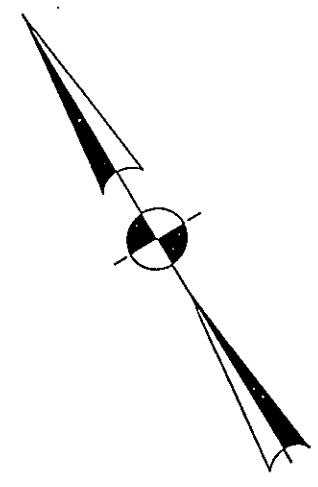


PLAT SHOWING
RIGHT-OF-WAY DEDICATION
FOR
**KILN CREEK PARKWAY
PHASE 7**



Virginia Beach, Va. • Newport News, Va. • Suffolk, Va.
Phone: (804) 873-1139

SCALE: 1" = 100'
SHEET 2 OF 2
DATE: 10/1/90



APPROVED:
YORK COUNTY BOARD OF SUPERVISORS
BY: J. Mark Carter
PLAT APPROVING AGENT
DATE: FEBRUARY 19, 1991

STATE OF VIRGINIA
COUNTY OF YORK
IN THE CLERK'S OFFICE OF THE CIRCUIT
COURT FOR THE COUNTY OF YORK THE 21st
DAY OF February, 1991 THIS MAP WAS
PRESENTED AND ADMITTED TO RECORD AS THE
LAW DIRECTS IN PLAT BOOK 11, PAGE 287

TESTE: NANCY B. KANE, CLERK
CLERK
BY: Carol Drosselmann, D.C.
4:18 P.M.