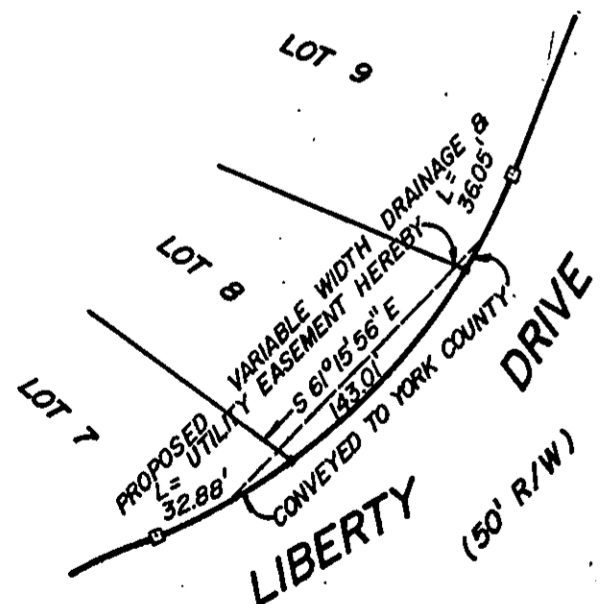


VICINITY MAP  
SCALE: 1" = 2,000'

NO.	BEARING	DISTANCE
-1	S 76°17'05" E	458.15'
-2	N 00°44'48" E	329.90'
-3	S 81°43'59" E	229.24'
-4	S 77°36'47" E	294.76'
-5	N 13°42'55" E	130.00'
-6	N 00°44'48" E	258.35'
-7	S 84°16'24" E	318.15'
-8	S 82°11'06" E	223.36'
-9	N 13°42'55" E	50.00'
-10	S 39°15'12" E	50.00'
-11	S 84°11'19" E	23.26'
-12	S 88°36'49" W	0.93'

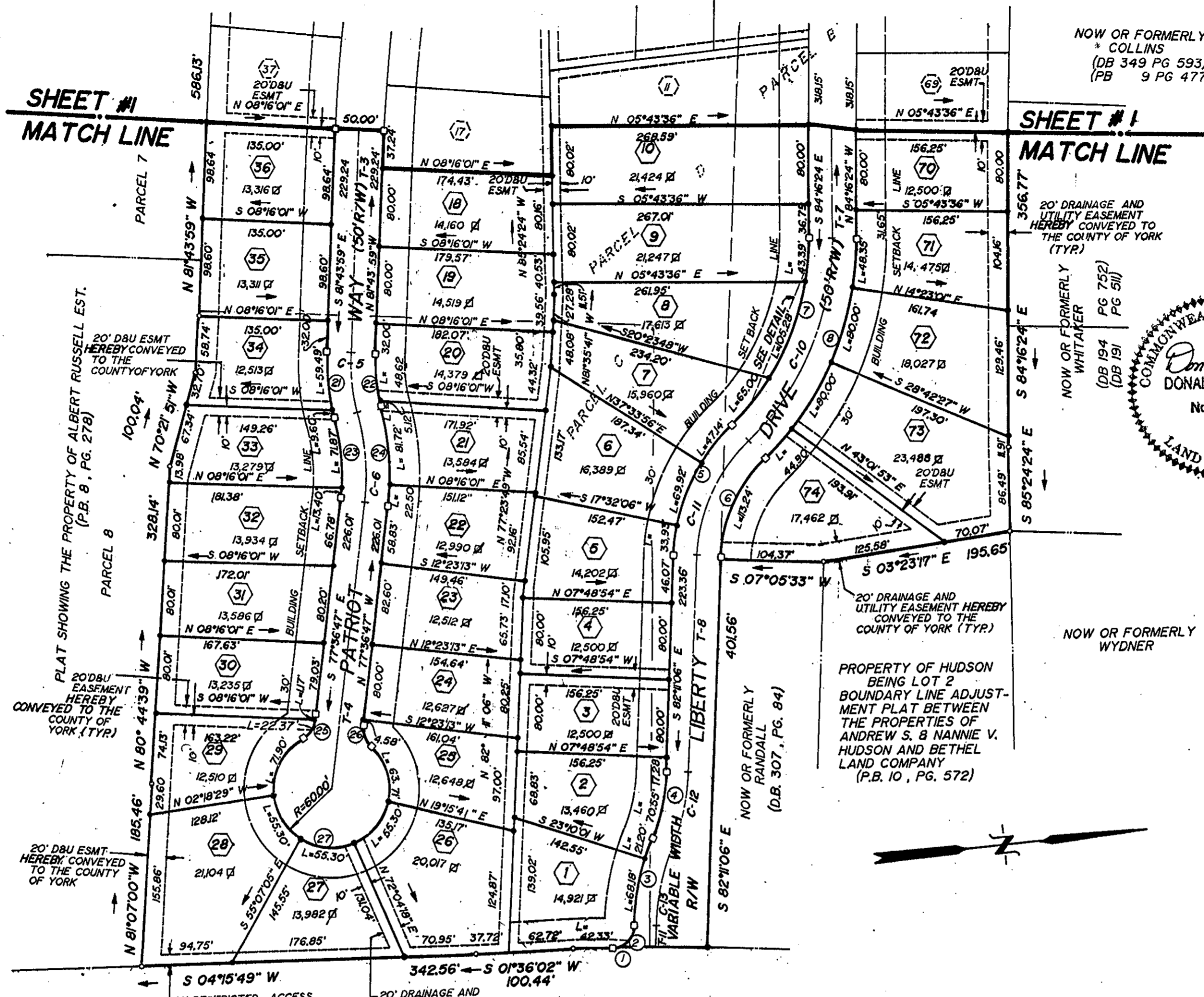


DETAIL  
SCALE: 1" = 80'

UTILITIES NOTES:

WATER: EACH LOT WITHIN THIS SUBDIVISION IS SERVED BY PUBLIC WATER PROVIDED BY THE CITY OF NEWPORT NEWS, VA.

SEWER: EACH LOT WITHIN THIS SUBDIVISION IS SERVED BY PUBLIC SEWER PROVIDED BY THE COUNTY OF YORK, VA.



BIG BETHEL ROAD - STATE ROUTE 600  
(VARIABLE WIDTH R/W)

NOTE: THE RECORDATION OF THIS PLAT SHALL OPERATE TO TRANSFER, IN FEE SIMPLE, TO THE COUNTY OF YORK SUCH PORTION OF THE PREMISES PLATTED AS IS ON THE PLAT SET APART FOR STREETS, ALLEYS OR OTHER PUBLIC USE AND TO TRANSFER TO THE COUNTY OF YORK ANY EASEMENT INDICATED ON THE PLAT FOR DRAINAGE AND / OR SANITARY SEWER TO CREATE A PUBLIC RIGHT OF PASSAGE OVER THE SAME.

CURVE DATA TABLE						CENTERLINE CURVE DATA TABLE						
NO	DELTA	RADIUS	TANGENT	ARC	CHORD	NO.	DELTA	RADIUS	TANGENT	ARC	CHORD	CH. BEARING
1	1°25'57"	5759.58'	72.0'	144.0'	144.00'	C-1	11°37'47"	275.00'	28.00'	55.82'	55.72'	S 82°47'56" W
2	87°45'57"	25.00'	24.04'	38.29'	34.66'	C-2	26°43'53"	181.25'	43.06'	84.56'	83.80'	S 89°39'01" E
3	20°29'11"	250.00'	45.18'	89.38'	88.91'	C-3	12°58'02"	275.00'	31.26'	62.24'	62.11'	S 07°13'51" W
4	20°12'42"	200.00'	35.65'	70.35'	70.19'	C-4	03°26'54"	2,075.00'	98.73'	197.31'	197.24'	N 79°00'32" W
5	43°16'19"	200.00'	79.30'	158.60'	147.43'	C-5	17°35'40"	200.00'	30.95'	61.42'	61.18'	S 89°28'11" W
6	43°16'19"	150.00'	59.47'	118.94'	110.52'	C-6	21°42'52"	250.00'	47.95'	94.75'	94.18'	S 88°28'13" E
7	45°20'37"	270.00'	127.91'	255.82'	208.14'	C-7	24°11'35"	275.00'	58.94'	116.12'	115.26'	S 01°37'07" W
8	45°20'37"	320.00'	153.67'	307.34'	246.69'	C-8	11°13'27"	775.00'	76.15'	151.82'	151.58'	N 04°51'56" W
21	17°35'40"	225.00'	34.82'	69.64'	68.82'	C-9	04°58'48"	275.00'	11.96'	23.90'	23.89'	S 86°45'48" E
22	17°35'40"	175.00'	27.08'	54.16'	53.52'	C-10	45°20'37"	295.00'	123.23'	233.46'	227.42'	S 61°36'05" E
23	21°42'52"	225.00'	43.15'	86.30'	84.76'	C-11	43°15'19"	175.00'	69.38'	132.11'	129.00'	N 60°33'26" W
24	21°42'52"	275.00'	52.74'	105.48'	103.60'	C-12	20°12'42"	225.00'	40.10'	79.37'	78.96'	S 72°04'45" E
25	53°58'05"	25.00'	12.73'	25.46'	22.69'	C-13	20°29'11"	225.00'	40.66'	80.45'	80.02'	N 72°12'59" W
26	53°58'05"	25.00'	12.73'	25.46'	22.69'							
27	287°56'10"	60.00'	30.15'	60.30'	30.15'							

NOW OR FORMERLY COLLINS (DB 349 PG 593) (PB 9 PG 477)

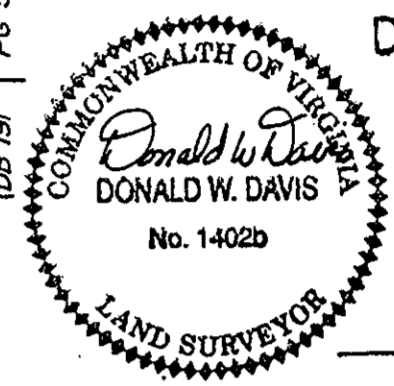
SUBDIVISION PLAT OF

# PATRIOT VILLAGE

COUNTY OF YORK, VIRGINIA  
SCALE: 1" = 100' DATE: AUGUST 15, 1990

SHEET 2 OF 2  
DAVIS & ASSOCIATES

LAND SURVEYORS - PLANNERS  
4033 GEO. WASH. MEM. HWY.  
GRAFTON, VIRGINIA 23692



## SYMBOLS

- DENOTES 30' MINIMUM BUILDING SETBACK LINE.
- DENOTES IRON PIPE FOUND
- DENOTES DRAINAGE & UTILITIES EASEMENT HEREBY CONVEYED TO THE COUNTY OF YORK.
- DENOTES 10' RESTRICTED ACCESS EASEMENT HEREBY CONVEYED TO YORK COUNTY.
- DENOTES CONCRETE MONUMENT SET.
- DENOTES EXISTING DRAINAGE & UTILITIES EASEMENT.
- DENOTES IRON PIPE SET

APPROVED  
YORK COUNTY BOARD OF SUPERVISORS

BY: J. Mark Crite  
PLAT APPROVING AGENT

DATE: April 19, 1991

STATE OF VIRGINIA  
COUNTY OF YORK  
IN THE CLERKS OFFICE OF THE CIRCUIT COURT FOR THE COUNTY OF YORK THE 22<sup>nd</sup> DAY OF April 19 91 THIS MAP WAS PRESENTED AND ADMITTED TO RECORD AS THE LAW DIRECTS IN PLAT BOOK 11, PAGE 314.

TESTE: NANCY B. KANE, CLERK  
CLERK

BY: Carol D. Russell, D.C.  
1:55 PM.