

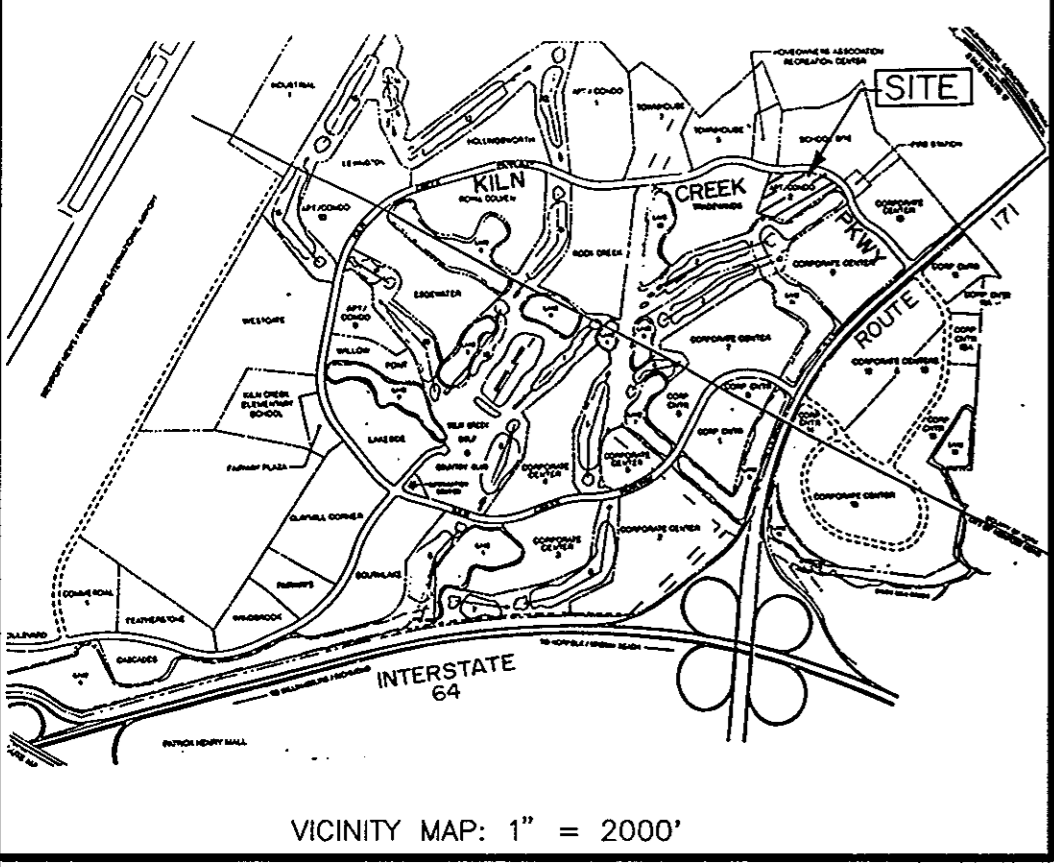
PLAT OF SUBDIVISION
THE VILLAGES OF KILN CREEK

APT / CONDO 2

COUNTY OF YORK, VIRGINIA

DATE: AUG. 20, 1991 SHEET 1 OF 1 SCALE: 1" = 100'

SRA SLEDD, RUNEY & ASSOCIATES, P.C.
ENGINEERS PLANNERS SURVEYORS
11832 ROCK LANDING DRIVE, SUITE 203
NEWPORT NEWS, VIRGINIA 23606
(804) 873-3386



EXISTING 20' EASEMENT FOR LANDSCAPING, UTILITIES, IRRIGATION, DRAINAGE, BIKE PATH & PEDESTRIAN EASEMENT RESERVED BY KILN CREEK ASSOCIATES, A VIRGINIA GENERAL PARTNERSHIP P.B.11, PG.288

APPROX. LOCATION EXIST. ENTRANCE
EXISTING CITY OF NEWPORT NEWS 10' WATERLINE EASEMENT P.B.11, PG.288
EXISTING COUNTY OF YORK 20' DRAINAGE & UTILITY EASEMENT P.B.11, PG.288

VILLAGES OF KILN CREEK LIMITED PARTNERSHIP
SINGLE FAMILY 3 AREA
D.B. 602, PG. 374

VILLAGES OF KILN CREEK LIMITED PARTNERSHIP
LAKE NO. 11
D.B. 602, PG. 374

VILLAGES OF KILN CREEK LIMITED PARTNERSHIP
GOLF COURSE, PARCEL E
P.B.11, PG.308

THE PLATTING OF THE LAND HEREON SHOWN IS WITH THE FREE CONSENT AND IN ACCORDANCE WITH THE DESIRE OF THE UNDERSIGNED TRUSTEES.
CRESTAR BANK (FORMERLY UNITED VIRGINIA BANK)
D.B. 602, PG. 384, D.B. 607, PG. 406
CONSENTED TO:

ROBERT W. HEHL, TRUSTEE

BRETT K. SMITH, TRUSTEE
(EITHER OF WHOM MAY ACT)

I, Frankie L. Sluka, A NOTARY PUBLIC IN AND FOR THE STATE OF VIRGINIA, DO HEREBY CERTIFY THAT THE ABOVE NAMED PERSONS WHOSE NAMES ARE SIGNED TO THE FOREGOING WRITING HAS ACKNOWLEDGED THE SAME BEFORE ME IN MY OFFICE AND STATE AFORESAID.
GIVEN UNDER MY HAND THIS 21st DAY OF August, 1991.

Frankie L. Sluka
NOTARY PUBLIC

MY COMMISSION EXPIRES Oct. 31, 1994.

APPROVED:
YORK COUNTY BOARD OF SUPERVISORS

BY: J. Mel Carter
PLAT APPROVING AGENT

DATE: October 9, 1991

STATE OF VIRGINIA
COUNTY OF YORK

IN THE CLERK'S OFFICE OF THE CIRCUIT COURT FOR THE COUNTY OF YORK, THE 10th DAY OF Oct, 1991
THIS MAP WAS PRESENTED AND ADMITTED TO RECORD AS THE LAW DIRECTS IN PLAT BOOK 11, PAGE 351.

TESTE: NANCY B. KANE, CLERK
CLERK

BY: Catherine Bender, D.C.

THE PLATTING OF THE LAND HEREON SHOWN IS WITH THE FREE CONSENT AND IN ACCORDANCE WITH THE DESIRES OF THE UNDERSIGNED OWNERS AND PROPRIETORS.

VILLAGES OF KILN CREEK LIMITED PARTNERSHIP
A VIRGINIA LIMITED PARTNERSHIP

BY VKC, INC., GENERAL PARTNER

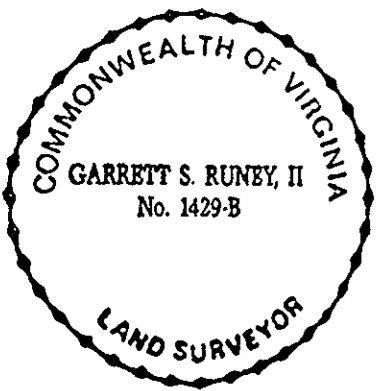
Robert R. DeLuca
ROBERT R. DeLUCA, PRESIDENT DATE 8/20/91

I, Frankie L. Sluka, A NOTARY PUBLIC IN AND FOR THE STATE OF VIRGINIA, DO HEREBY CERTIFY THAT THE ABOVE NAMED PERSON WHOSE NAME IS SIGNED TO THE FOREGOING WRITING HAS ACKNOWLEDGED THE SAME BEFORE ME IN MY OFFICE AND STATE AFORESAID.
GIVEN UNDER MY HAND THIS 23rd DAY OF August, 1991.

Frankie L. Sluka
NOTARY PUBLIC

MY COMMISSION EXPIRES Oct. 31, 1994.

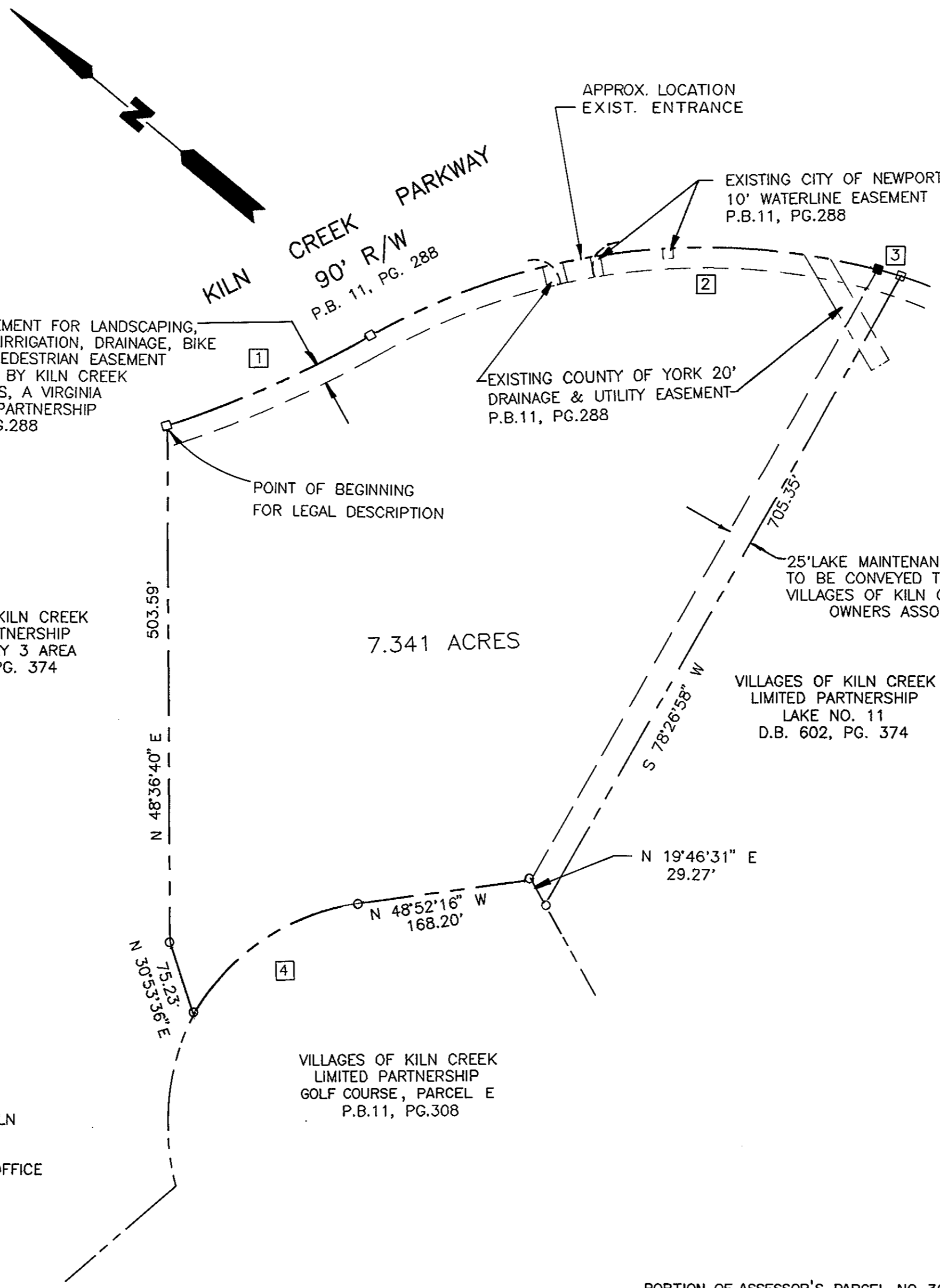
TO THE BEST OF MY KNOWLEDGE AND BELIEF, ALL THE REQUIREMENTS AS SET FORTH IN THE ORDINANCE FOR APPROVING PLATS OF SUBDIVISION IN THE COUNTY OF YORK, VIRGINIA HAVE BEEN COMPLIED WITH, INCLUDING A CLOSURE OF NOT LESS THAN 1"/10,000'. THIS IS TO CERTIFY THAT THE LAND EMBRACED IN THIS SUBDIVISION IS IN THE NAME OF THE VILLAGES OF KILN CREEK LIMITED PARTNERSHIP, A VIRGINIA LIMITED PARTNERSHIP, AND WAS ACQUIRED FROM KILN CREEK ASSOCIATES, A VIRGINIA GENERAL PARTNERSHIP, BY DEED DATED 31 DECEMBER, 1990, AND DULY RECORDED IN THE CLERK'S OFFICE OF THE CIRCUIT COURT OF THE COUNTY OF YORK, VIRGINIA, IN DEED BOOK 602, PAGE 374. I CERTIFY THAT MONUMENTS AS SHOWN ON THIS PLAT WILL BE SET ON OR BEFORE 17 JULY, 1992.



Garrett S. Runey, II
GARRETT S. RUNEY, II, P.E., L.S.

UTILITIES NOTES
WATER: EACH LOT WITHIN THIS SUBDIVISION IS SERVED BY PUBLIC WATER PROVIDED BY NEWPORT NEWS WATERWORKS.

SEWER: EACH LOT WITHIN THIS SUBDIVISION IS SERVED BY PUBLIC SEWER PROVIDED BY THE COUNTY OF YORK.



- LEGEND
- INDICATES IRON PIPE TO BE SET
 - INDICATES CONC. MON. TO BE SET
 - INDICATES CONC. MON. FOUND
 - INDICATES EASEMENT
 - AS SHOWN

PORTION OF ASSESSOR'S PARCEL NO. 36-1

AREA EXCLUDING LAKE MAINTENANCE EASEMENT.....6.942 ACRES

AREA OF LAKE MAINTENANCE EASEMENT.....0.399 ACRES (UNDEVELOPABLE LAND)

TOTAL 7.341 ACRES

CURVE DATA TABLE

CURVE	DELTA	RADIUS	LENGTH	TANGENT	CHORD	BEARING
1	011 53 23	1,045.00'	216.85'	108.82'	216.46'	S 64 52 16 E
2	044 51 47	655.00'	512.87'	270.39'	499.87'	S 48 23 04 E
3	003 39 03	355.00'	22.62'	11.31'	22.62'	S 24 07 40 E
4	052 20 56	220.00'	201.01'	108.13'	194.09'	N 75 02 44 W