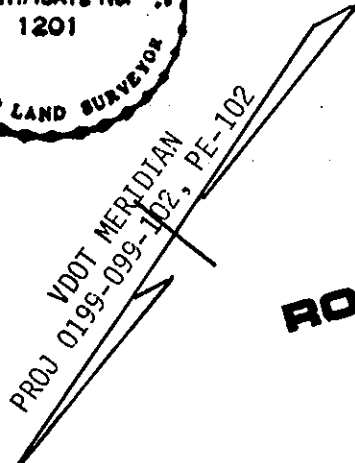


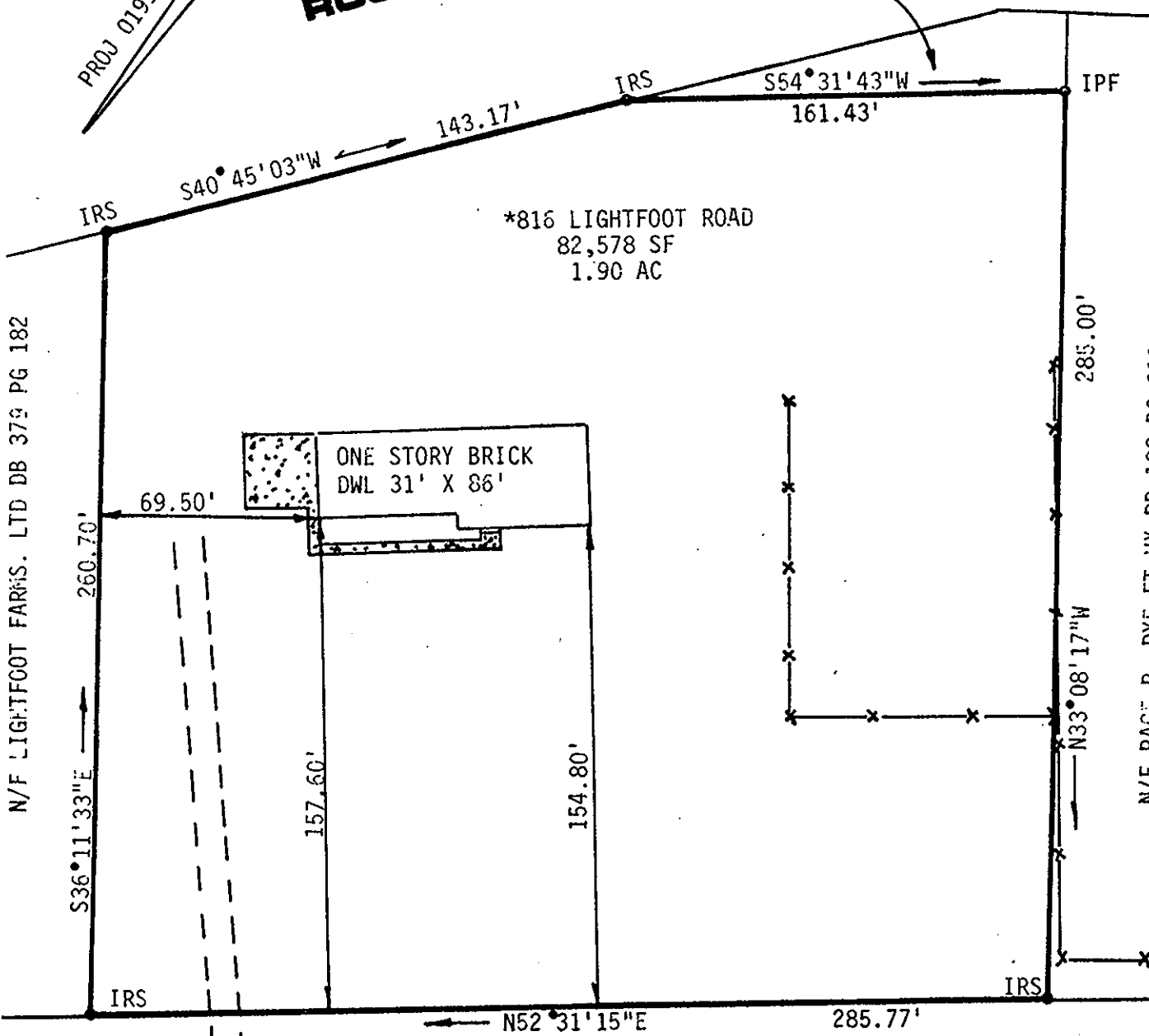
\*THIS PROPERTY LIES WITHIN THE FEMA DEFINED FLOOD ZONE X AS NOTED ON COMMUNITY-PANEL NUMBER 510182 0025 B. EFFECTIVE DATE DECEMBER 16, 1988.



ROUTE 199

VAR R/W

N/F LIGHTFOOT FARM, LTD



LIGHTFOOT ROAD RTE. 646 60' R/W

L. V. WOODSON & ASSOCIATES, INC. ENGINEERS, SURVEYORS & PLANNERS, P.O. BOX 613 WILLIAMSBURG, VIRGINIA 23185

LEGEND O = IP = IRON PIN, □ = MON = MONUMENT, — = PROPERTY LINE, - - - = CENTERLINE, - · - · = EASEMENT LINE

A SURVEY OF THE RESIDUE OF THE LOIS V. MILLIRONS PROPERTY BRUTON DISTRICT, YORK COUNTY, VA.

SCALE: 1"=50' REF:WB 52/350 DATE: APRIL 30, 1991 AREA: 1.90 AC

Filed in the Clerk's Office, Circuit Court, York Co., Va. on 2nd day of December 1991

JO A4917

Teste:

Nancy B. Kane, Clerk