

GRAFTON WOODS

SECTION FOUR

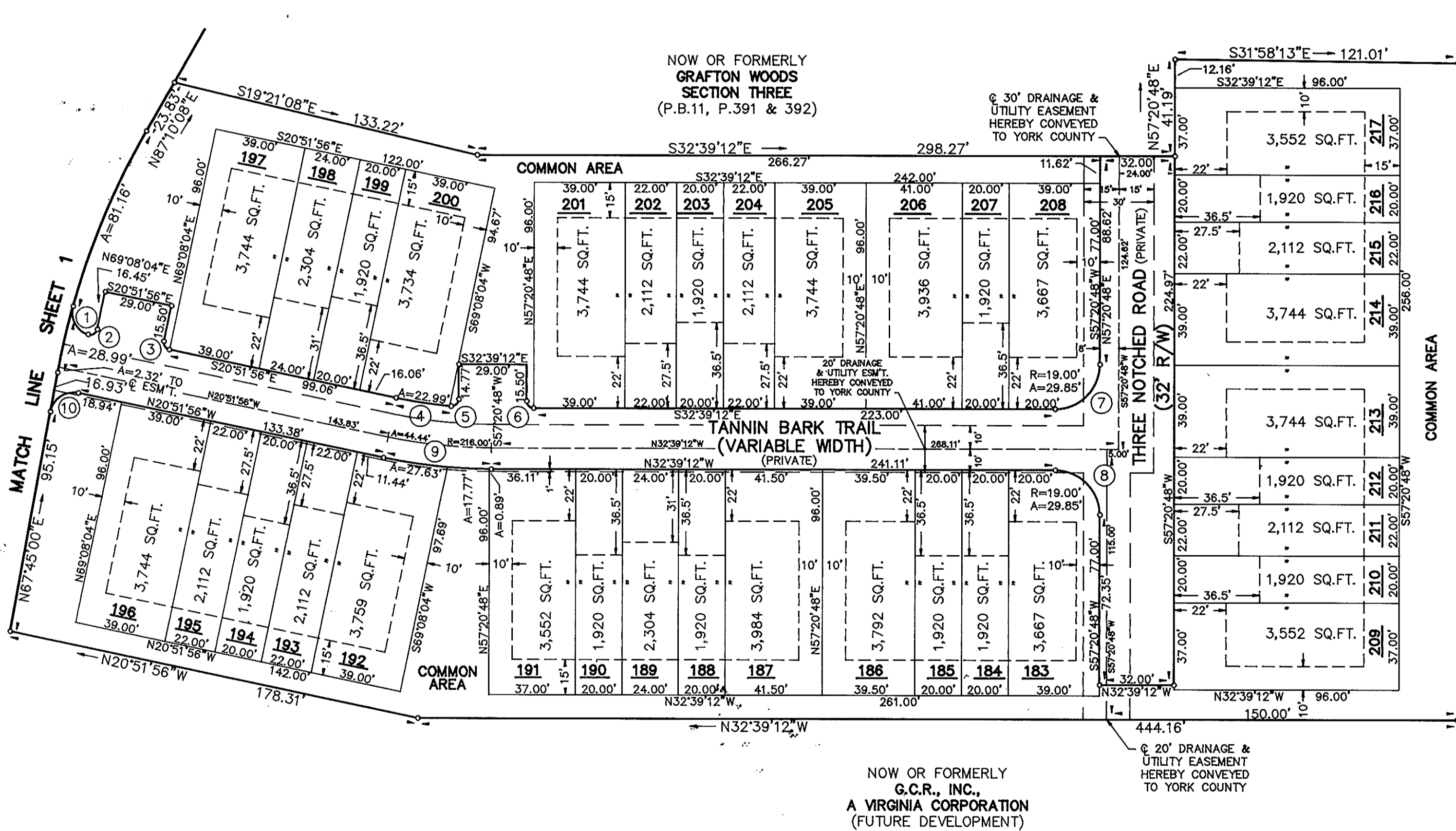
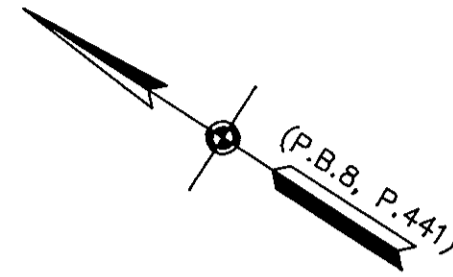
GRAFTON DISTRICT - COUNTY OF YORK, VIRGINIA

THE SIRINE GROUP, LTD.

SURVEYORS • ENGINEERS • PLANNERS
P.O. BOX 450, ROUTE 17
WHITE MARSH, VIRGINIA 23183

SCALE: 1" = 40' FEBRUARY 5, 1992

SHEET 2 OF 2



CURVE TABLE

NO.	RADIUS	DELTA	ARC	TANGENT	CHORD	CHORD BRG.
1	10.00'	86°45'49"	15.14'	9.45'	13.74'	S29°28'42"W
2	3.00'	96°57'43"	5.08'	3.39'	4.49'	S62°23'05"E
3	3.00'	90°00'00"	4.71'	3.00'	4.24'	S24°08'04"W
4	199.00'	06°50'44"	23.78'	11.90'	23.76'	S24°17'18"E
5	3.00'	94°56'32"	4.97'	3.27'	4.42'	S75°10'56"E
6	3.00'	90°00'00"	4.71'	3.00'	4.24'	S12°20'48"W
7	19.00'	90°00'00"	29.85'	19.00'	26.87'	S77°39'12"E
8	19.00'	90°00'00"	29.85'	19.00'	26.87'	N12°20'48"E
9	225.00'	11°47'16"	46.29'	23.23'	46.21'	N26°45'32"W
10	10.00'	91°23'04"	15.95'	10.24'	14.31'	N66°33'28"W
11	325.00'	16°21'42"	92.81'	46.72'	92.49'	S75°55'51"W
12	375.00'	16°21'42"	107.09'	53.91'	106.72'	N75°55'51"E
13	10.00'	90°00'00"	15.71'	10.00'	14.14'	N22°45'00"E
14	10.00'	85°32'30"	14.93'	9.25'	13.58'	S65°01'15"E

APPROVED:
YORK COUNTY BOARD OF SUPERVISORS

BY: J. Mail Cate
PLAT APPROVING AGENT

DATE: May 21, 1992

STATE OF VIRGINIA
COUNTY OF YORK
IN THE CLERK'S OFFICE OF THE CIRCUIT COURT FOR
THE COUNTY OF YORK THE 22 DAY OF May,
1992, THIS PLAT WAS PRESENTED AND ADMITTED TO
RECORD AS THE LAW DIRECTS IN PLAT BOOK 11,
PAGE 422

TESTED: NANCY B. KANE, CLERK
CLERK

BY: Catharine Rander, Jr.