

STATE OF VIRGINIA COUNTY OF YORK
IN THE CLERK'S OFFICE OF THE CIRCUIT COURT FOR THE
COUNTY OF YORK, THE DAY OF 1989, THIS
PLAT WAS PRESENTED AND ADMITTED TO RECORD AS THE LAW DIRECTS
IN PLAT BOOK PAGE

Filed in the Clerk's Office, Circuit Court, York Co., Va. SEE SHEET 1 FOR NOTES

the 2nd day of June 19 92
Teste: Nancy B. Kane, Clerk
Carol D. Crossland D.C.

Plat Book No. 11 Page 439

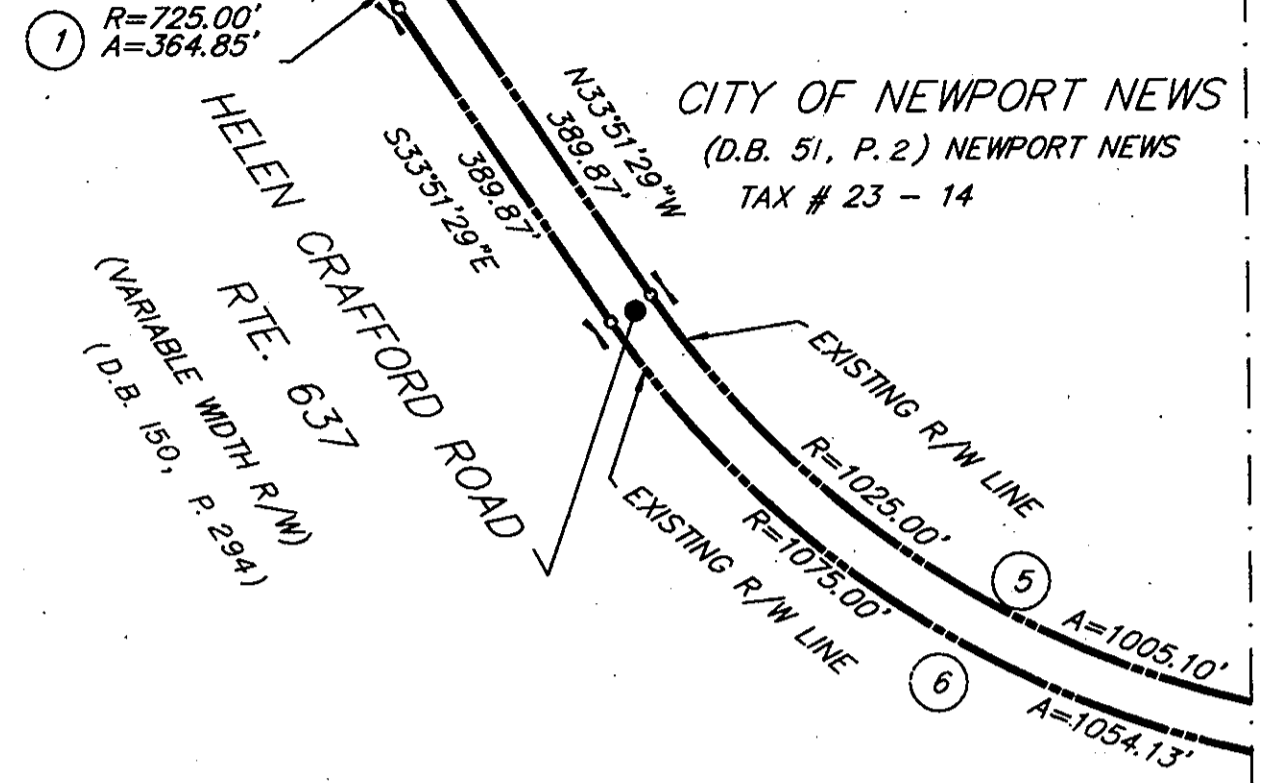
VIRGINIA: IN THE CLERK'S OFFICE OF THE CITY OF NEWPORT NEWS,
THE DAY OF 1989, THIS PLAT WAS PRESENTED
AND ADMITTED TO RECORD AS THE LAW DIRECTS IN PLAT BOOK
AT PAGE

MATCH LINE - SEE SHEET 8 OF 63

TESTE: _____ CLERK
BY: _____ D.C.

TESTE: _____ CLERK

CURVE TABLE						
NO.	DELTA	RADIUS	ARC	TANGENT	CHORD	CH. BEARING
1	28°50'00"	725.00'	364.85'	186.37'	361.01'	S 48°16'29" E
5	56°11'00"	1025.00'	1005.10'	547.11'	965.31'	N 61°56'59" W
6	56°11'00"	1075.00'	1054.13'	573.80'	1012.40'	S 61°56'59" E



S35°26'45"E
14,974.53'

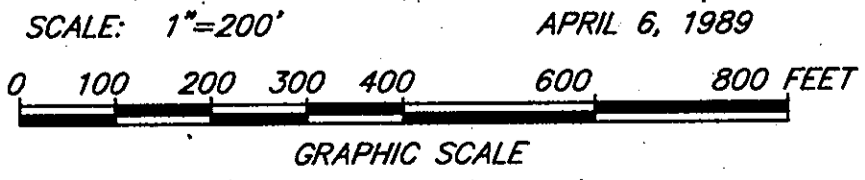
CITY OF NEWPORT NEWS
(D.B. 51, P. 2) NEWPORT NEWS
TAX # 23 - 14

COUNTY OF YORK
CITY OF NEWPORT NEWS
SEE NOTE 12

GRAFTON DISTRICT

MATCH LINE - SEE SHEET 11 OF 63

MATCH LINE - SEE SHEET 13 OF 63



DWG. NO. 90-C-11
DWG. FILE NO. HA-1457
PRINT FILE NO. N-8141

MATCH LINE - SEE SHEET 17 OF 63