

STATE OF VIRGINIA COUNTY OF YORK
IN THE CLERK'S OFFICE OF THE CIRCUIT COURT FOR THE
COUNTY OF YORK, THE DAY OF 1989, THIS
PLAT WAS PRESENTED AND ADMITTED TO RECORD AS THE LAW DIRECTS
IN PLAT BOOK PAGE

SEE SHEET 1 FOR NOTES
Filed in the Clerk's Office, Circuit Court, York Co., Va.
the 2nd day of June 1992
Teste: Nancy B. Kane, Clerk
Carl D. Rosselmeas
MATCH LINE - SEE SHEET 37 OF 63

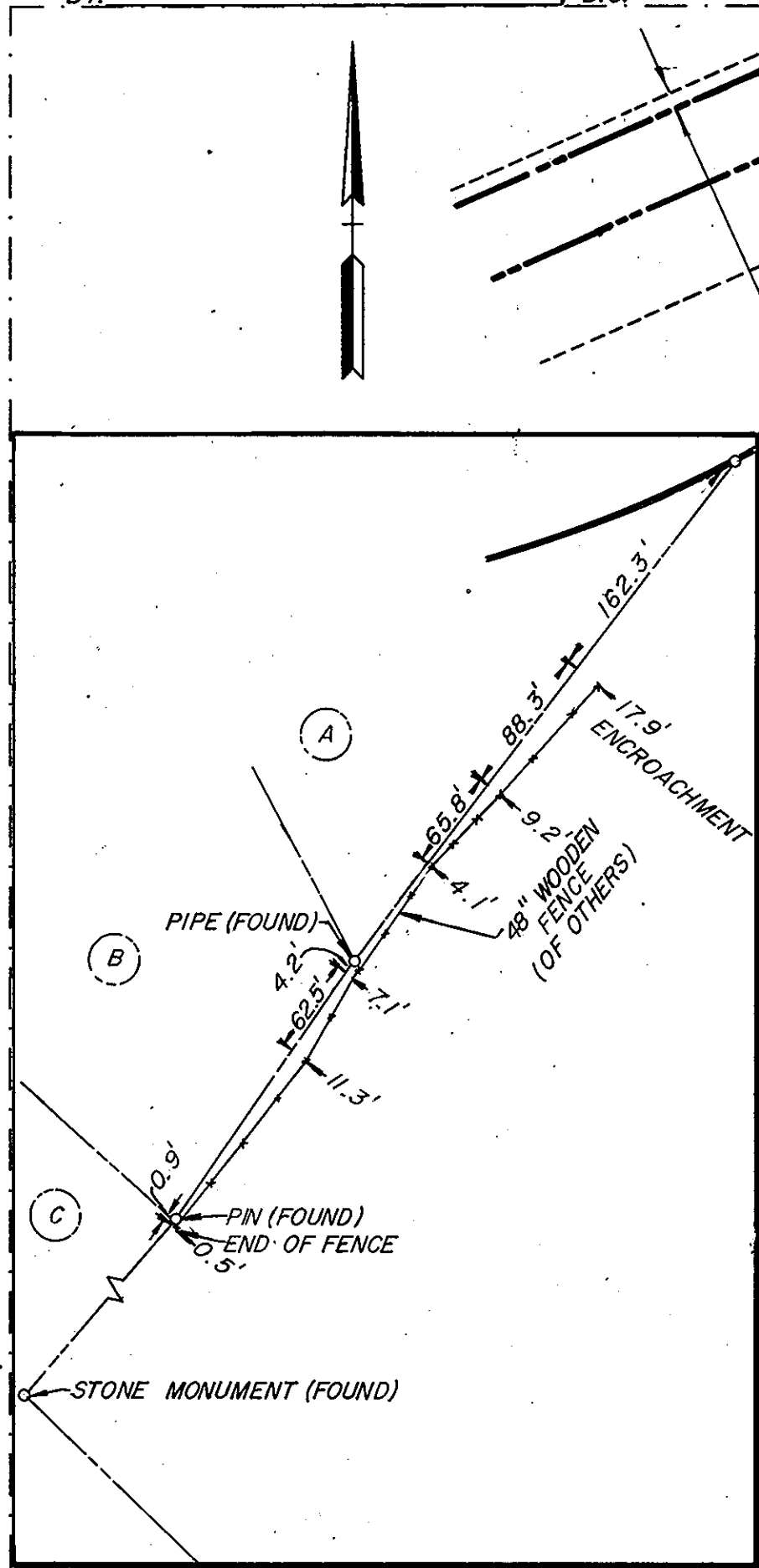
VIRGINIA:
IN THE CLERK'S OFFICE OF THE CITY OF NEWPORT NEWS,
THE DAY OF 1989, THIS PLAT WAS PRESENTED
AND ADMITTED TO RECORD AS THE LAW DIRECTS IN PLAT BOOK
AT PAGE

TESTE: _____ CLERK
BY: _____ D.C.

Plat Book No. 11 Page 470

TESTE: _____ CLERK

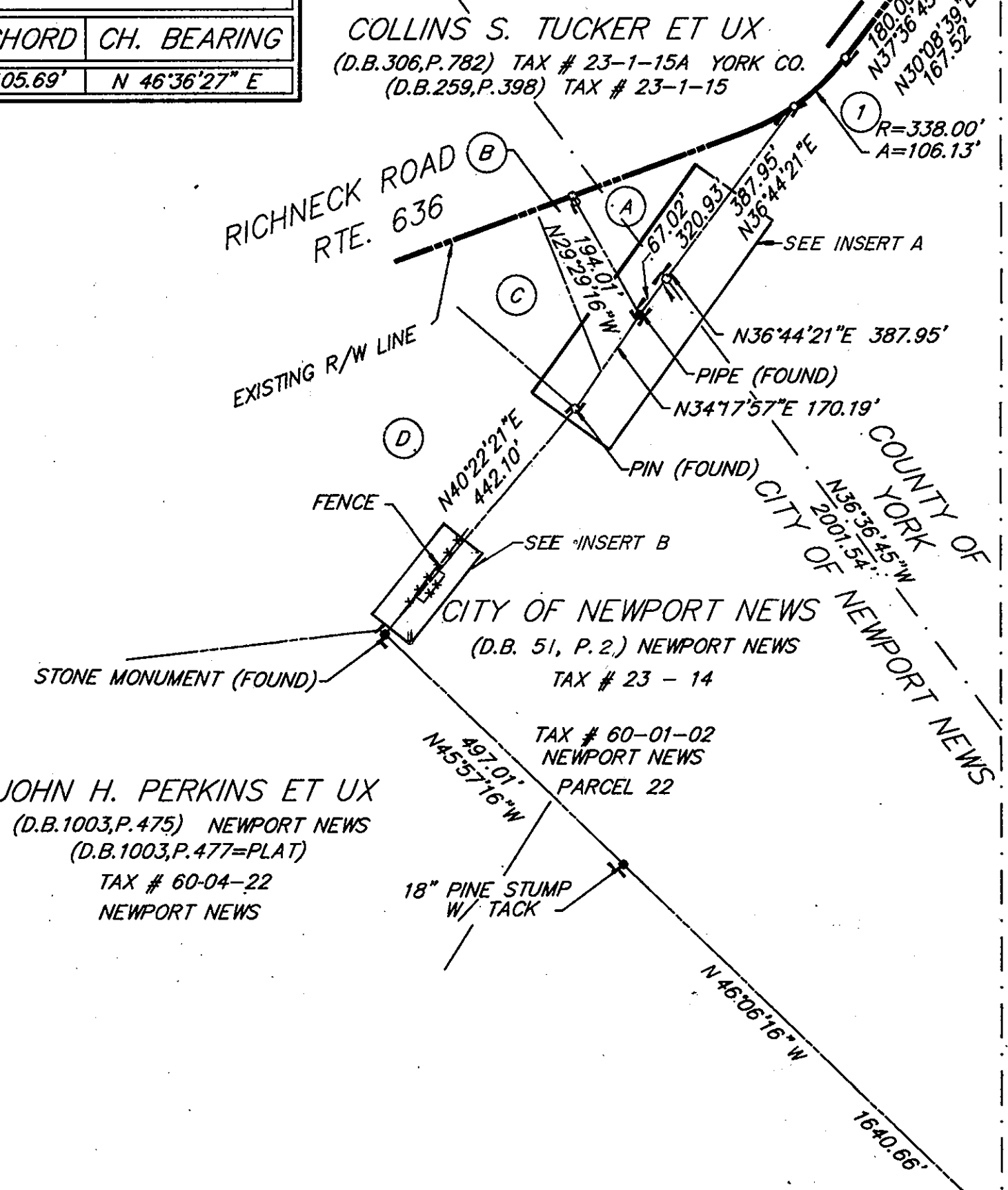
CURVE TABLE						
NO.	DELTA	RADIUS	ARC	TANGENT	CHORD	CH. BEARING
1	17°59'23"	338.00'	106.13'	53.50'	105.69'	N 46°36'27" E



120' VIRGINIA POWER EASEMENT
(D.B. 752, P. 252) NEWPORT NEWS

20' COLONIAL PIPELINE COMPANY EASEMENT
BY AGREEMENT IN D.B. 225,
P. 392 & P.B. 8, P. 227

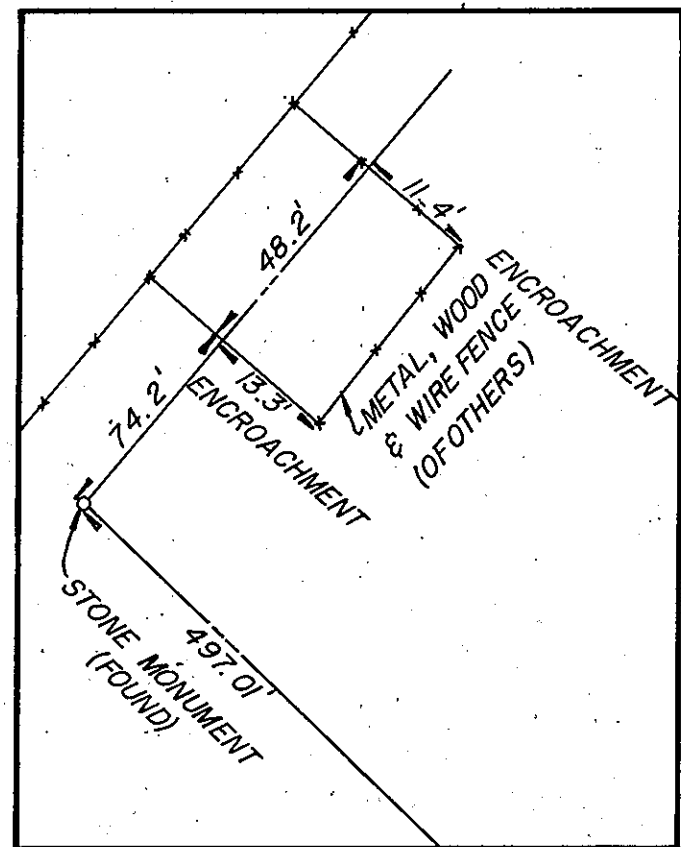
CSX RAILROAD (100' R/W)
(FORMERLY CHESAPEAKE & OHIO RAILROAD
(P.B.A., P. 139A & 139B) NEWPORT NEWS



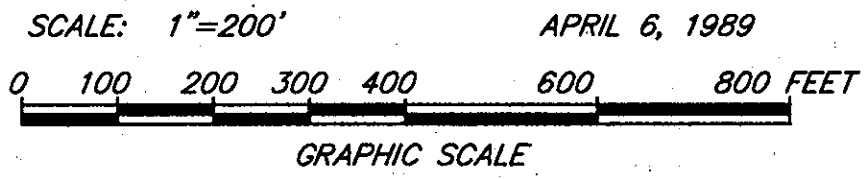
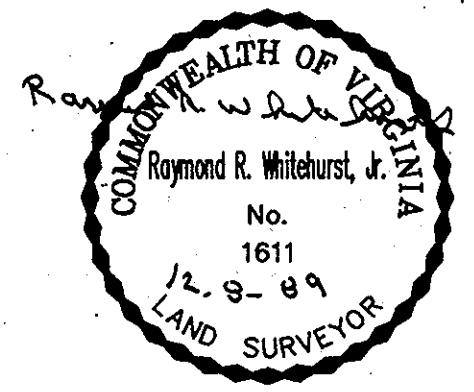
- (A)
JOHN S. EDLOW ET UX
(D.B. 410, P. 304)
(P.B. 10, P. 416)
TAX # 23-1-17
- (B)
WALTER I. SKEETER
(D.B. 1133, P. 1282) NEWPORT NEWS
(P.B. 16, P. 58)
TAX # 55-02-4
- (C)
PEARLINE E. SKEETER
(D.B. 329, P. 382) (P.B. 16, P. 58)
TAX # 55-02-5 & 6
- (D)
RHONDA Y. DIXON ET AL
(D.B. 1082, P. 1057)
TAX # 55-02-02 & 01
NEWPORT NEWS

INSERT A - NOT TO SCALE

INSERT B - NOT TO SCALE



PARCEL "A"
(D.B. 1134, P. 829-833=PLAT)
MCCALE DEVELOPMENT CORPORATION
(D.B. 1134, P. 839)
TAX # 61-01-01



DWG. NO. 90-C-11
DWG. FILE NO. HA-1457
PRINT FILE NO. N-8141