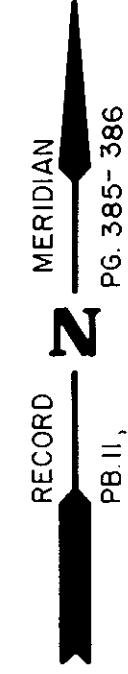
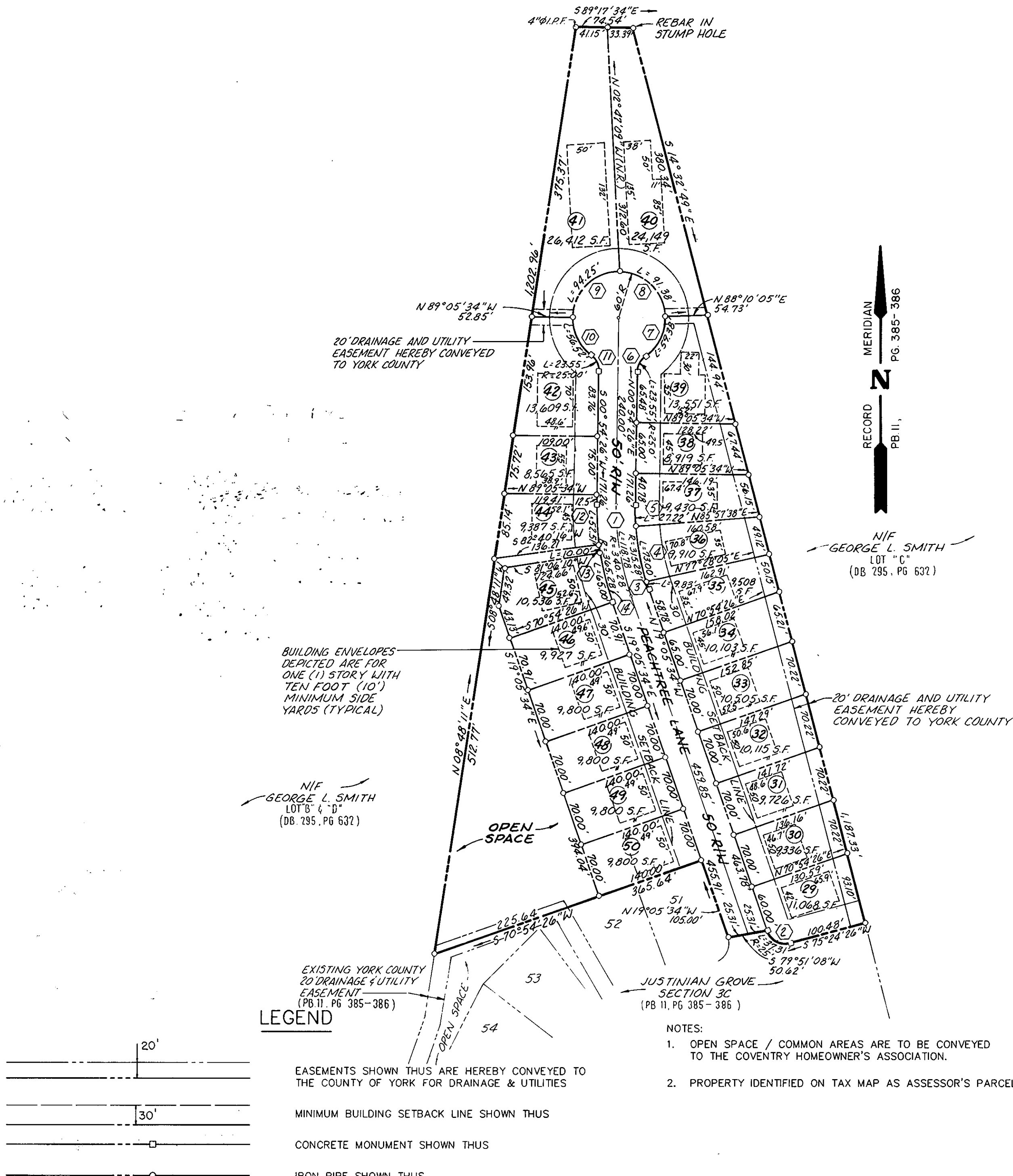
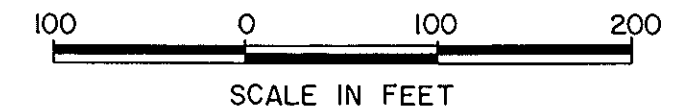


RECORD PLAT
FOR:
COVENTRY PLANNED DEVELOPMENT
JUSTINIAN GROVE
SECTION 3D

COUNTY OF YORK, VIRGINIA
The DeYoung-Johnson Group, Inc.
P.O. Box 3505
Williamsburg, Virginia 23187

SCALE: 1"=100'
JULY 20, 1991
SHEET 2 OF 2



CURVE DATA						
Δ	DELTA	RADIUS	LENGTH	TANGENT	CHORD	CHORD BEARING
1	20°00'00"	340.28'	118.78'	60.00'	118.18'	N 09°05'34" W
2	85°30'00"	25.00'	37.31'	23.11'	33.94'	N 61°50'34" W
3	01°47'11"	315.28'	9.83'	4.92'	9.83'	N 18°11'59" W
4	13°16'01"	315.28'	73.00'	36.67'	72.84'	N 10°40'23" W
5	04°56'48"	315.28'	27.22'	13.62'	27.21'	N 01°33'58" W
6	53°58'05"	25.00'	23.55'	12.73'	22.69'	N 27°53'28" E
7	56°42'13"	60.00'	59.38'	32.38'	56.99'	N 26°31'18" E
8	87°15'39"	60.00'	91.38'	57.20'	82.80'	N 45°27'45" W
9	90°00'00"	60.00'	94.25'	60.00'	84.85'	S 45°54'26" W
10	53°58'05"	60.00'	56.52'	30.55'	54.45'	S 26°04'37" E
11	53°58'05"	25.00'	23.55'	12.73'	22.69'	S 26°04'37" E
12	08°14'09"	365.28'	52.51'	26.30'	52.46'	S 03°12'39" E
13	01°34'07"	365.28'	10.00'	5.00'	10.00'	S 08°06'47" E
14	10°11'44"	365.28'	65.00'	32.59'	64.91'	S 13°59'42" E

APPROVED

YORK COUNTY BOARD OF SUPERVISORS

BY: J. Mark Cate
PLAT APPROVING AGENT

DATE: June 16, 1992

STATE OF VIRGINIA
COUNTY OF YORK

IN THE CLERK'S OFFICE OF THE CIRCUIT COURT FOR THE COUNTY OF YORK THE 23rd DAY OF June, 1992
THIS MAP WAS PRESENTED AND ADMITTED TO RECORD AS THE LAW DIRECTS IN PLAT BOOK 11, PAGE 492.

TESTE: NANCY B. KANE, CLERK
CLERK

BY: Carolyn D. Rosselmeier, Deputy Clerk