

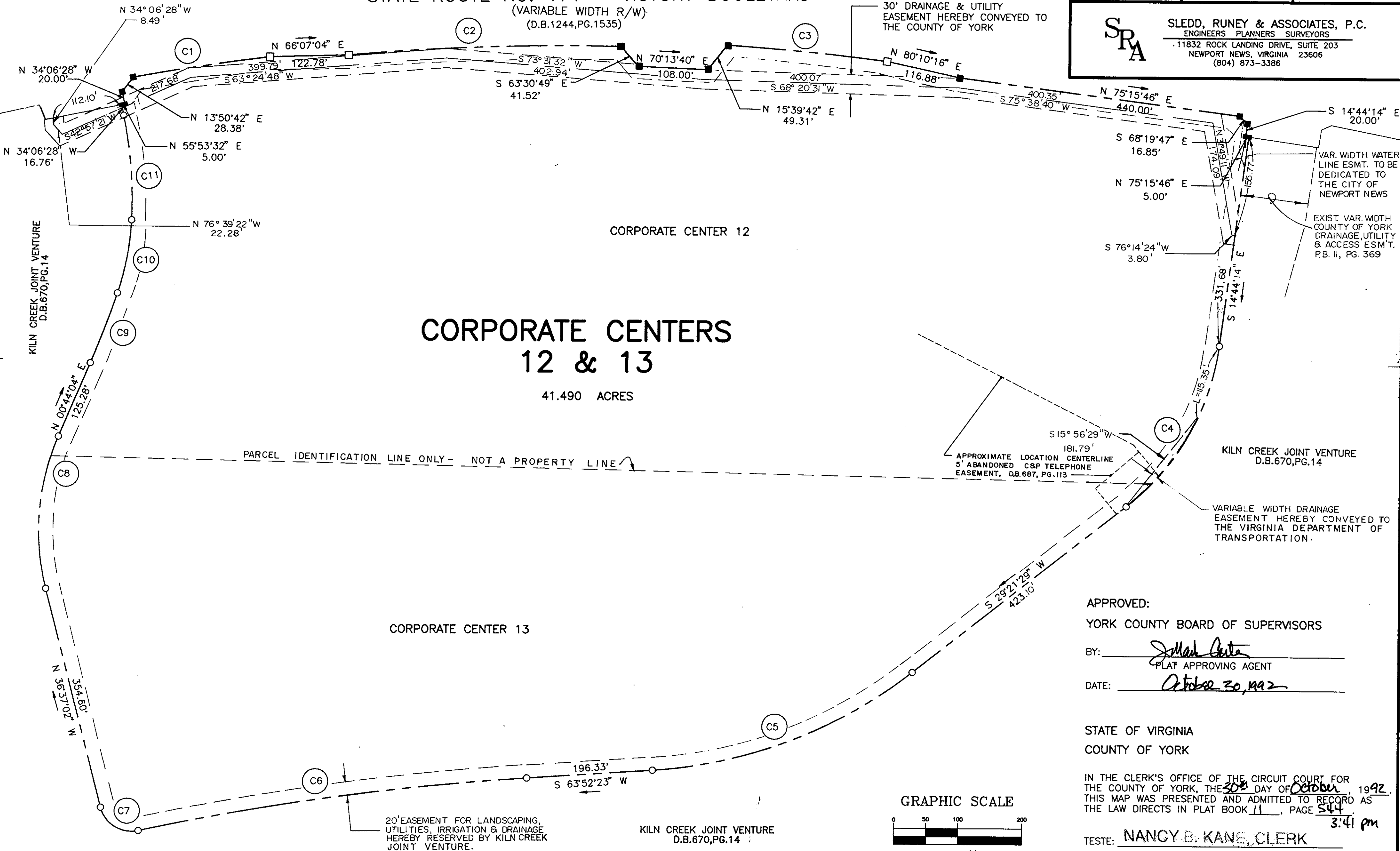
PLAT OF SUBDIVISION  
 THE VILLAGES OF KILN CREEK  
**CORPORATE CENTERS  
 12 & 13**  
 COUNTY OF YORK, VIRGINIA

DATE: 11 FEB. 1992 SHEET 2 OF 2 SCALE: 1"=100'

**SRA** SLEDD, RUNEY & ASSOCIATES, P.C.  
 ENGINEERS PLANNERS SURVEYORS  
 11832 ROCK LANDING DRIVE, SUITE 203  
 NEWPORT NEWS, VIRGINIA 23606  
 (804) 873-3386

STATE ROUTE NO. 171 - VICTORY BOULEVARD  
 (VARIABLE WIDTH R/W)  
 (D.B.1244,PG.1535)

30' DRAINAGE & UTILITY  
 EASEMENT HEREBY CONVEYED TO  
 THE COUNTY OF YORK



**CORPORATE CENTERS  
 12 & 13**  
 41.490 ACRES

APPROVED:  
 YORK COUNTY BOARD OF SUPERVISORS  
 BY: *J. Mark Carter*  
 PLAT APPROVING AGENT  
 DATE: October 30, 1992

STATE OF VIRGINIA  
 COUNTY OF YORK  
 IN THE CLERK'S OFFICE OF THE CIRCUIT COURT FOR  
 THE COUNTY OF YORK, THE 30<sup>th</sup> DAY OF October, 1992.  
 THIS MAP WAS PRESENTED AND ADMITTED TO RECORD AS  
 THE LAW DIRECTS IN PLAT BOOK 11, PAGE 544.  
 TESTE: NANCY B. KANE, CLERK  
 CLERK  
 BY: *Kenneth D. Kegan, D.C.*

